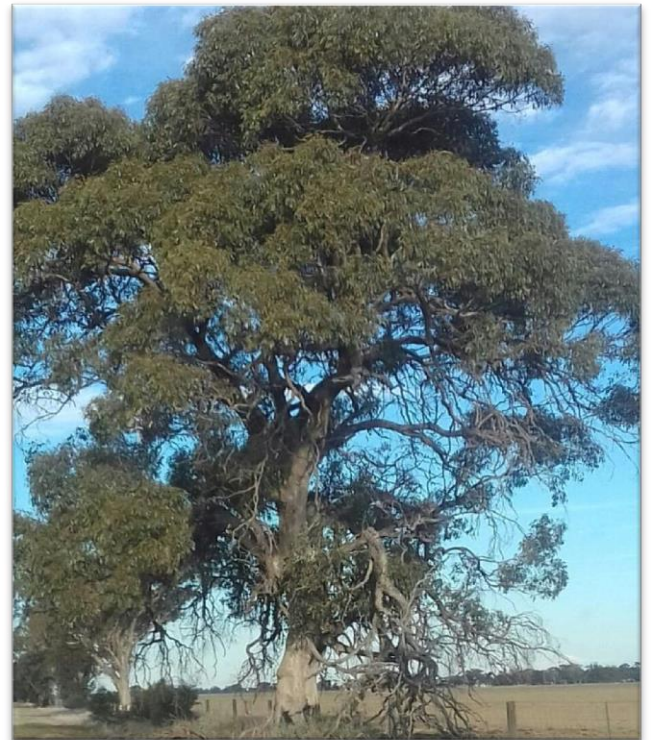


TALLYGAROPNA COMMUNITY PLAN

2019



THRIVING, CARING AND STRONG

CONTENTS

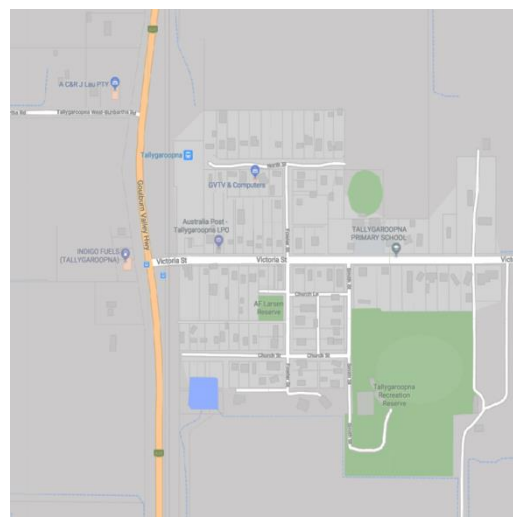
EXECUTIVE SUMMARY.....	3
What did we achieve in the last 5 years?	4
Areas of Action and Priorities	5
Priorities	6
5 year review process	11
Meet the Community Plan Committee.....	11

EXECUTIVE SUMMARY

The Tallygaroopna Community is a safe friendly community not far from urban centre of Shepparton providing an exceptional sense of community and rural accessibility for its residents and visitors.

This this review aims to address the opportunities to overcome challenges within the town utilising Tallygaroopna’s assets and strengths. This has led to identifying the grain silos, Tallygaroopna walking track and increased community events as key opportunities.

Tallygaroopna Data:



Shepparton is 16km's south of Tallygaroopna

Tallygaroopna area (85 sq Kms)		Tallygaroopna township	
People	579	264	
Male	311	140	
Female	267	120	
Median age	38	37	
Families	150	73	
Average children per family	2.0	1.9	
All private dwellings	213	96	
Average people per household	2.9	2.8	
Median weekly household income	\$1 391	\$1 547	
Median monthly mortgage repayment	\$1 300	\$1 300	
Average motor vehicles per dwelling	2.5	2.5	

Source: ABS Census 2016

WHAT DID WE ACHIEVE IN THE LAST 5 YEARS?

- Rumble strips installed from East Victoria Street were completed in 2017-2018 to curb speed and safety issues.
- Support and completion of Tallygaroopna Men's Shed upgrade in 2018
- Multiple successful fundraising garage sales.
- Continual hosting for Activities in the Park 2015, 2016 & 2017
- Food Swap
- Movie night held in 2016
- Tallygaroopna Station Park upgrade & Historical Signage
- New Town Entry Signs installed
- 5 year Review 2018



*Some of the Tallygaroopna
Men's Shed members.*

AREAS OF ACTION AND PRIORITIES

The 2018 5 year review of the Tallygaroopna Community Plan identified 6 key areas of action:

Community Connection

Growth and Business Development

Recreation and Health

Support Services

Town Infrastructure

Natural Assets & Beautification

The review identified the following top five diverse priorities which span four areas of action:

1. Walking/Cycling Track – *Recreation and Health*
2. Community Events for locals – *Community Connection*
3. Support initiatives to encourage investment, tourism and attraction (e.g. Silo Art) – *Growth and Business Development*
4. Street Upgrades – *Town Infrastructure*
5. Encourage Business development – *Growth and Business Development*



Tallygaroopna Soldiers' Memorial Hall

PRIORITIES

Priority action	Key tasks	Potential partners	Priority ranking
Community Connection			
Community Communication	<ul style="list-style-type: none"> ▪ Location options for community Noticeboard explored ▪ Develop Design concept of noticeboard ▪ Produce a community directory to place on the notice board- annually updated - with community groups and key contacts ▪ Community produced newsletter 	<ul style="list-style-type: none"> ▪ Greater Shepparton City Council ▪ Local community groups ▪ External funding through corporate, government, philanthropic sources 	Low
Recognition of volunteers	<ul style="list-style-type: none"> ▪ No specific actions yet identified 	<ul style="list-style-type: none"> ▪ Community members & Organisations ▪ Greater Shepparton City Council ▪ Victorian Volunteering Portal 	Medium
Community events for locals	<ul style="list-style-type: none"> ▪ Calendar of existing community events ▪ Support partnering community groups to host an event e.g. ▪ School holiday activities ▪ Community BBQ/Tea ▪ High tea in the hall ▪ Movie nights ▪ Activities in the Park ▪ 	<ul style="list-style-type: none"> ▪ Local community groups ▪ Greater Shepparton City Council – Active Living Branch ▪ School Parents Association ▪ Visitor Information Centre 	High
Community events to attract visitors	<ul style="list-style-type: none"> ▪ Explore options with Councils Arts, Events and Tourism department ▪ Fun Run ▪ Music festival ▪ The great Tally Bike Race ▪ Establish a committee to develop the concept ▪ ANZAC Day festival support 	<ul style="list-style-type: none"> ▪ Greater Shepparton City Council ▪ Local community groups ▪ External funding through corporate, government, philanthropic sources 	Low
Community Garden	<ul style="list-style-type: none"> ▪ Identify land for a community garden 	<ul style="list-style-type: none"> ▪ Tallygaroopna Men’s Shed ▪ Greater Shepparton City Council ▪ Tally Recreation Reserve 	Low

Priority action	Key tasks	Potential partners	Priority ranking
Recreation and Health			
<i>Walking/Cycling tracks</i>	<ul style="list-style-type: none"> ▪ Finish the proposed track (prioritise Victoria St stage) ▪ Develop proposal for extension of the track and a proposed route ▪ Explore signage options for natural and historical sites of significance ▪ Control of Bindii ▪ Walking track signage 	<ul style="list-style-type: none"> ▪ Greater Shepparton City Council. ▪ Tallygaroopna Recreation reserve management committee ▪ Congupna and Tallygaroopna Landcare group ▪ Cycling Victoria ▪ External funding through corporate, government, philanthropic sources 	High
<i>Recreation Reserve upgrades</i>	<ul style="list-style-type: none"> ▪ Installation of power upgrade to the facility to allow future upgrades listed. ▪ Air conditioning ▪ Kitchen upgrade ▪ Recognition of Fletcher family donation at sports club 	<ul style="list-style-type: none"> ▪ Greater Shepparton City Council. ▪ Tallygaroopna Recreation reserve management committee 	Medium
<i>Recreation and Fitness activities</i>	<ul style="list-style-type: none"> ▪ Identify activity options currently available through council's active living program ▪ Canvas community support for available options such as: <ul style="list-style-type: none"> - Exercise group - Walking group/event - Cycling group/event - Fitness activities in the park - Skate park playgrounds - More shade at park ▪ Support Men's Shed Initiatives & growth 	<ul style="list-style-type: none"> ▪ Greater Shepparton City Council ▪ Local community 	Medium
<i>Youth focused initiatives/alternative recreation</i>	<ul style="list-style-type: none"> ▪ Support Tallygaroopna Youth SPOT (<i>has also been identified as skate park/alternative recreation opportunity</i>) 	<ul style="list-style-type: none"> ▪ Greater Shepparton City Council ▪ Tallygaroopna Primary School 	Medium

Priority action	Key tasks	Potential partners	Priority ranking
Town Infrastructure			
<i>Improvements to town infrastructure</i>	<ul style="list-style-type: none"> ▪ Explore and advocate opportunities to provide connections to natural gas, sewage, and better water pressure ▪ Toilet block at Station Park ▪ Support Town Hall extension/upgrades - 	<ul style="list-style-type: none"> ▪ Greater Shepparton City Council ▪ APA Group Natural Gas ▪ Goulburn Valley Water 	High
<i>Enhancement to the township entrance</i>	<ul style="list-style-type: none"> ▪ Signage to the town off the highway ▪ Landscape upgrade and tidy up ▪ Advocate for safe crossing over Railway & highway to Service Station and Station Park ▪ Increased interpretive signage such as maps. 	<ul style="list-style-type: none"> ▪ Greater Shepparton City Council. ▪ Congupna and Tallygaroopna Landcare group ▪ Tallygaroopna Primary School ▪ Lions Club ▪ Local community 	Low
<i>Improved Drainage for the township</i>	<ul style="list-style-type: none"> ▪ Communication of current plans and actions to date and for future plans ▪ Develop partnership approach with council maintenance program to enable the use of local knowledge to inform the program 	<ul style="list-style-type: none"> ▪ Greater Shepparton City Council. ▪ Tallygaroopna Flood Recovery planning Committee 	High
<i>Street upgrades</i>	<ul style="list-style-type: none"> ▪ Undertake street lighting audit ▪ Identify priority locations for additional street lighting ▪ Liaise with councils works department to ensure inclusion in the works program ▪ Advocate for better footpath options 	<ul style="list-style-type: none"> ▪ Greater Shepparton City Council ▪ Local community 	Medium

Priority action	Key tasks	Potential partners	Priority ranking
Growth and Business Development			
<i>Planning for town growth - rural and urban living zones and potential industry zones</i>	<ul style="list-style-type: none"> ▪ Identify key areas zoned for rural and urban living sub division with town planners ▪ Identify potential developers ▪ Canvas interest 	<ul style="list-style-type: none"> ▪ Greater Shepparton City Council ▪ Relevant district landowners ▪ Land developers ▪ Real Estate agencies 	Low
<i>Encourage business Development in the town</i>	<ul style="list-style-type: none"> ▪ Work with councils investment attraction department to develop a promotion strategy to attract business relocation or start up to the town ▪ Particular interest in small business e.g. milk bar, pub, café ▪ Advocate for local business/industrial estate 	<ul style="list-style-type: none"> ▪ Greater Shepparton City Council ▪ Private developer/investor 	Low
<i>Support initiatives to encourage investment, tourism and attraction</i>	<ul style="list-style-type: none"> ▪ Progress Silo Art initiative for silos ▪ Tourist stop e.g. showers, toilets, parking space. 	<ul style="list-style-type: none"> ▪ Greater Shepparton City Council ▪ Tallygaroopna Community ▪ Historical Society 	High

Priority action	Key tasks	Potential partners	Priority ranking
Support Services			
<i>Support services and activities for older people in town</i>	<ul style="list-style-type: none"> Work with Councils Home and Community care program to explore options for transport for health services and options for activities based programs in the town 	<ul style="list-style-type: none"> Greater Shepparton City Council Tallygaroopna Primary School 	Medium
<i>Maintain support services and activities for early childhood.</i>	<ul style="list-style-type: none"> Work with councils investment attraction department and the children and youth department to develop promotion material and a promotion strategy for the current services 	<ul style="list-style-type: none"> Greater Shepparton City Council Tallygaroopna Primary School Tallygaroopna preschool 	High
<i>Public Transport</i>	<ul style="list-style-type: none"> Advocate for more services Investigate community transport initiatives that work 	<ul style="list-style-type: none"> Greater Shepparton City Council Public Transport Victoria Community organisations 	Low

Priority action	Key tasks	Potential partners	Priority ranking
Natural Assets & Beautification			
<i>Tree planting</i>	<ul style="list-style-type: none"> Work with Landcare and One Tree Per Child to identify opportunities to improve trees 	<ul style="list-style-type: none"> Greater Shepparton City Council Tallygaroopna Primary School Tallygaroopna & Congupna Landcare 	Low
<i>Maintain natural Assets</i>	<ul style="list-style-type: none"> Advocate for Elm Tree preservation and re-planting 	<ul style="list-style-type: none"> Greater Shepparton City Council Tallygaroopna & Congupna Landcare 	Medium
<i>Town Entrance</i>	<ul style="list-style-type: none"> Investigate options for improving amenity and aesthetics of town entrance 	<ul style="list-style-type: none"> 	Low

5 YEAR REVIEW PROCESS

Our 5 year review process is outlined below:

- A **Survey** was made available online, via post and in hard copies collected through community Hubs such as the Tallygaroopna Post Office, Tallygaroopna Primary School and Tallygaroopna Kindergarten.
- The **Draft Plan event** was open to the community inviting key community Members and groups to comment.
- The **final Draft Plan feedback** form was made available for comment through Council's website.

More than 41 individuals and households contributed to the 5yr Plan Review via the above means.

MEET THE COMMUNITY PLAN COMMITTEE

The Tallygaroopna Community Plan Committee at the time of this review is made up of 8 regular and committed community members. They are continuously working together to advocate promote and enhance the community of Tallygaroopna.

- Sue Lau
- Tony Farrell
- Rob Slee
- Lindsay Muston
- Lynette Currie
- Trish Moss
- Daniel Watson
- John Tielen



