

ATTACHMENT TO AGENDA ITEM

Ordinary Meeting

17 February 2015

Agenda Item 7.4	Shepparton Sports Stadium Future Direction Plan	
Attachment 1	DRAFT Shepparton Sports Stadium Future Direction Plan - Final	276
Attachment 2	Stadium Future Direction Plan Feedback.....	284
Attachment 3	Netball Victoria Response - Shepparton Sports Stadium Future Direction Plan.....	291
Attachment 4	Submission to GSCC Shepp Sports Stadium	301
Attachment 5	Feedback - Shepparton Sports Stadium (Squash & Racquetball Victoria)	308
Attachment 6	Shepparton Sports Stadium - Future Direction Plan Submission 15.10.14.....	311



SHEPPARTON SPORTS STADIUM FUTURE DIRECTION PLAN

C
SHEP

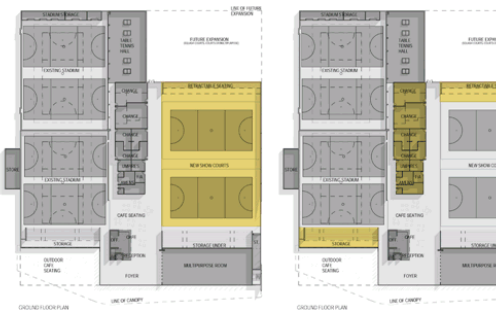
PROPOSED DEVELOPMENT STAGES

The development of the Shepparton Sports Stadium has been divided into 4 key stages that can occur individually or simultaneously. Each stage provides facilities and/or amenities offered to our community. The aesthetics and modernisation of the facility will improve greatly throughout each stage. The addition at any time.

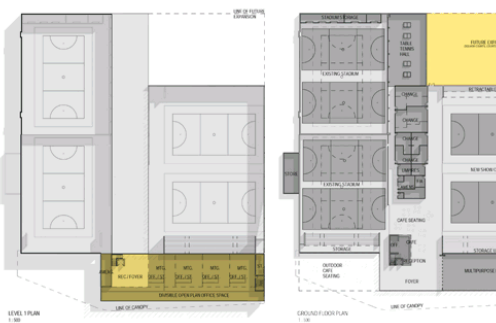
Completed Development



Stage 1: New Courts/Seating Stage 2: Amenities/Seating



Stage 4: New Mezzanine Squash (at any time)



INTRODUCTION

The Shepparton Sports Stadium Future Direction Plan is a visionary document that is dependent on accessing future funding. The proposed additional two courts, including a 2000 seat show court and events space, the addition of six new squash courts, new multi-purpose room, new courts and multi-purpose room, refurbished amenities and a new mezzanine sports house and administrative hub.

Strategic Alignment

The proposed development of the Shepparton Sports Stadium has a strong alignment to key strategic Council documents including the Council Plan 2013-2017, Sport 2050 Strategic Plan and the Greater Shepparton 2030 Strategy. The proposal aims to achieve key objectives of the current Council Plan, primarily:

Objective 3 of Strategic Goal 3 'Economic Prosperity' is to 'Make Greater Shepparton the regional sporting capital of Victoria and a leading sporting destination' and it specifically identifies a strategy to, "develop plans and prepare a feasibility study for the redevelopment of the Shepparton Sports Stadium".

Objective 3 of Strategic Goal 1 'Active and Engaged Communities (Social)' is to 'Ensure that liveability options are always considered in our decision making activities' and aims for Council to '...work with the community in partnership and collaboration, to enable the provision of infrastructure that reflects the needs of the community'.

Objective 4 of Strategic Goal 1 'Active and Engaged Communities (Social)' is to

'Provide sustainable community services to our community' and aims for Council to be committed to 'ensuring that the services provided to our communities reflect the needs and aspirations of the community.

Objective 1 of Strategic Goal 4 'Quality Infrastructure (Built)' is to 'Ensure that the community has access to high quality facilities' and aims for Council to '...continue to provide for the development and maintenance of high quality facilities to enhance the opportunities for community participation in a broad range of activities at both passive and active level'.

Stadium Background

The Stadium was originally opened in 1972 with two courts and subsequently extended in 1994 with an additional two courts and a multi-purpose area. The Stadium has a diverse range of facilities including: four basketball courts, a multi-purpose room, café and a 400 seat grandstand. The facility can also be configured to accommodate badminton courts (16), netball courts (4), table tennis tables (6) and volleyball courts (3).

In 2012-13 the Stadium had 165,097

visitations from the three key associations the Greater Shepparton Basketball Association, Shepparton Badminton Association and Shepparton Table Tennis Association, other user groups and hirers including Junior Stadium Netball, Premier Soccer, school use, sporting club use, Stadium program and private hirers and providers.

In addition to the acknowledgement of the need to re-develop the Stadium as identified in the Council plans and strategies outlined above, the need for development is well supported by existing associations and user groups.

Association and Program Membership

Estimated membership numbers for the key associations who utilise the Shepparton Sports Stadium are as follows (as at September 2012):

- Greater Shepparton Basketball Association (juniors): 628 members with 39% of these female.
- Greater Shepparton Basketball Association (seniors): 334 members with 20% of these female.
- Junior Development Programs (Aussie Hoops, Mini Minton, Aussie Net): 50 child visits per week with

PROPOSAL RATIONALE

The Stadium development will provide User Groups with the opportunity for growth, and better meet demand during peak competition and program times. The million is estimated to provide an increase in new visitation to Greater Shepparton of 23,000 visitors per annum, generating \$5.7 million in new spending and an estimated investment payback period of 3-4 years. Further, the building has had no major upgrade in 20 years and the majority of the facility is 40 years old. If sound, the Stadium is aesthetically tired and requires upgrading to meet the expectations of current users and visitors.

All current Stadium users have suggested with expansion there is genuine scope for their activities to grow. This is especially true for basketball and also netball who have strongly indicated the need to develop a number of co-located compliant indoor netball courts within the city.

The sport of squash, which has strong participation and currently hosts a number of significant events, is currently located in a private building which is in poor condition and provides an uncertain future for the association.

The Shepparton Sports Stadium in addition to supporting local sports, has also hosted a number and variety of regional, state and even national events that not only enhance the operations and reputation of the Stadium, but importantly contribute significantly to the overall event-based tourism for Greater Shepparton. Development of the facility would assist in attracting events of a similar and higher quality.

The Council's Performing Arts personnel identified that there is no performing arts type venue with capacity of 1,500 or more people and that the provision of such would likely support the attraction of a number of higher profile attractions to the city.

In comparison with other significant regional cities including Bendigo, Ballarat, Geelong and Wagga Wagga the Shepparton Stadium provides less court space in one venue, does not have a modern show court and does not provide associated support infrastructure.

The Stadium is also identified in the Greater Shepparton Municipal Emergency Management Plan as an Emergency Relief Centre with the capacity to sleep up to 1,500 people making it the largest of the Relief Centre's identified and therefore likely to be required in major emergencies by both Greater Shepparton and the broader region.

An estimated increase of 23,000 visitors to Greater Shepparton generating \$5.7 million annually would support the local economy and employment sector. The Project Benefit Cost Ratio is estimated at 3.5:1 with an investment payback period of 3-4 years.



BENEFITS

In implementing the identified upgrades it is projected that the stadium would gain additional visitation of around 40,000 people each year with 50,000 if squash courts were provided. These increases are projected to generate up to an additional \$100,000 per annum in operating revenue expenditure, therefore providing a net positive annual return or reduction in current operating subsidy of around \$30,000 per annum or \$300.0

An independent economic and social assessment of the proposed project identified the following significant benefits:

Sporting Demand

This demand analysis confirms a significant uplift in stadium usage will be generated through the upgrade and expansion of facilities at Shepparton Sports Stadium, as identified in the Feasibility Study.

Of particular importance in an economic sense is the increased ability of many sporting organisations (including major users such as basketball, badminton and netball) to attract new National and State events to Shepparton due to the high quality and increased capacity of the redeveloped facility.

The redevelopment will also enable sports such as squash, racquetball and futsal to be based at the Sports Stadium, while Valley Sports will be better positioned to increase sports training programs to meet community demand.

Non-Sporting Demand

The redevelopment of the Shepparton Sports Stadium will enable the facility to become the municipality's largest venue in terms of fixed seating and exhibition floorspace. Additionally, the high quality of infrastructure and flexibility of spaces

provided will open new or expanded opportunities in a number of areas including:

- Performing arts – large-scale concerts, circus events, SheppARTon Festival, etc.
- Exhibitions and conferences – including major events requiring significant exhibition floorspace.
- Community events – including information days, town meetings and other community gatherings requiring a large indoor capacity.

Economic Impact

Economic benefits from the redevelopment of Shepparton Sports Stadium include:

- Project investment of \$18.4 million.
- Construction employment of 260 Full-time Equivalent (FTE) jobs, of which 155 FTE jobs are estimated to be filled by local construction workers over the construction phase.
- Net increase in permanent employment associated with the operation of the redeveloped stadium of 17.5 FTE jobs, including an estimated 10.5 FTE new jobs located at the facility.

- Increase in new visitation to Greater Shepparton of 23,000 visitors per annum, generating \$5.7 million in new spending annually for the local economy. This spending will support approximately 110 FTE ongoing jobs, of which an estimated 75 FTE jobs would be supported locally.
- Increased marketing exposure for Greater Shepparton through the hosting of sporting events, concerts and conferences.
- Reduction in Council's operational subsidy for the facility of \$30,000 per annum.
- Increase of 100 volunteers associated with sporting and other activities, representing an equivalent economic value of \$415,000 per annum.
- Project Benefit Cost Ratio of 3.5:1 and an investment payback period of 3-4 years.

Social Impact

Social benefits from the redevelopment of Shepparton Sports Stadium include:

- Increased participation in sports activities by Greater Shepparton residents, which is estimated at an

DEVELOPMENT STAGES: COSTS AND VISITATIONS

The development of the Shepparton Sports Stadium requires significant investment in all stages to provide enhanced opportunities for our community to participate in sport. This document provides a summary of the identified redevelopment options including staging and costing estimate as provided by quantity surveyors Trevormain. Table 2.0 outlines the estimated costs for each component of the potential redevelopment based on current Shepparton Sports Stadium participation and industry benchmarks. The table outlines the attendances associated with each component and stage.

Table 1.0 Development Stages and Estimated Costs

Stage	Description	Estimated Cost	Cumulative Cost
1	Additional two courts, including show court, fixed seating for 500 spectators and refurbished spectator amenities.	\$5,876,000	\$5,876,000
2	Refurbishment of existing facility amenities. Retractable seating for 1,500 spectators and compliance of existing courts for netball.	\$4,144,000	\$10,020,000
3	Reception refurbishment and new multi-purpose room.	\$3,621,000	\$13,641,000
4	Mezzanine sports house and administrative hub.	\$3,391,000	\$17,032,000
Squash	Six squash courts (can be developed at any stage)	\$1,381,000	
Total	Includes all components	\$18,413,000	

Table 2.0 Projected Visitations

Area	Attendances (per annum)	Associated Stage
Court Attendances	27,622	Stage 1
Sporting and Special Events	7,500	Stage 2
Multi-Purpose Room	3,000	Stage 3
Office Space	4,160	Stage 4
Squash Attendances	9,000	"B Stages"
Total Annual Increase In Attendances	51,282	



QUESTIONS OR ADDITIONAL INFORMATION

Shepparton Sports Stadium Future Direction Plan

Greater Shepparton City Council has adopted the Shepparton Sports Stadium Future Direction Plan as a visionary document that is dependent on accessing future funding. The plan will assist in guiding the future development of the Shepparton Sports Stadium.

If you have any questions and/or require additional information, please contact Council's Team Leader Leisure Facilities on (03) 5832 9700.





Shepparton Sports Stadium Future Direction Plan Feedback

Comment
Would like to see better facilities like Bendigo and Ballarat in Shepparton its been a decade too long.
Definitely needed. Rain proof roof. Public area for presentations etc. Better availability, mums changeroom, up to date lighting. A facility for general events (concerts, shows). An area for clubs use e.g. Clubrooms.
We need a new upgrade, more courts.
Very urgently needed for sport to continue to grow in Shepparton. Very urgently needed for basketball. A presentation area instead of the front foyer. Needs to commence immediately!
It will be great to see all the facilities modernised and additional seating to watch more sporting events. It will appeal to a wide audience.
We need 2 more courts and lots more parking. Make it happen - (3 playing juniors, basketball is on the way up).
Due to the lack of court space for training extra courts are needed, basketball is a fast growing sport.
Proposed developments would be an asset to the community, I think it would increase participation and also allow for large events - competitions to be held with ease.
This will be a great idea for the community and will bring a lot more people to the facility.
It would be good to have a complex similar to Bendigo that also supports the sports through the hospitality functions at the stadium.
It would be great to have more courts for basketball as some games are very late for school kids. We live out of town so im doing an early game for my youngest one. I drove home and later return for a later game with another son. More courts would mean earlier games and less late nights for school kids.
I believe it's a great way to develop sport in our area. Especially with obesity rates growing.
Anything that helps families and kids to participate in sport is great - Sports Stadium is in need of an upgrade.
The facilities at Shepparton are in desperate need of an upgrade. The facilities are outdated and require updating and expansion as the numbers in basketball are increasing. We need atleast 4 new courts, with adequate seating.
Would love better facilities/ more courts to be able to provide to the players of Greater Shepparton region.
We travel to many basketball venues in each regional city and Shepparton has the most out-dated facilities, its about time we have a major upgrade. It involves hundreds of children and their families and keeps these people off the streets in an active lifestyle.
We need new updated courts for the kids and community!
We need more courts so we can get more kids on the courts.
Two new courts long overdue, very much needed by the Shepparton Sports Stadium and the GSBA in particular.
Yes we should get new courts, and because theres a lot of teams.
The future plan looks great.
The future plans are great and it would be great for Shepparton and sport. The plan is excellent.
As treasurer of a club I am sick of turning kids away. This season we could have easily had 3 more teams but no court time. Need more courts desperately.
We need more courts, we need more so games don't start at 4:30, there is not enough courts for training.
Whilst we have good facilities- they could be great. Basketball is apopular sport that doesn't have the adequate space to allow all the lads who wish to participate to do so. In short games run late as it is, there isnt court space to allow for training. More space needed.
We need more basketball courts so we can have more games and train here.
We need more courts so the games don't go too late.
An expansion of the Shepparton Sports Stadium will benefit our community greatly. Also to attract more sporting events to Shepparton.
Outdated facilities need to accommodate the growing population.
More basketball courts please, to cater for domestic games and squad tournaments.
We need an upgrade of basketball etc. facilities.
Shepparton needs courts like the plan says. We are very out of date on our facilities.
More Courts, better Stadium.
Future Direction Plan, is excellent. Shepparton is in need of new courts, especially basketball courts. Very out of date and needs upgrading.
Need more courts desperately. Perhaps a café and retail sports shop. New scoreboards aswell.
We need more courts, up to date facilities and more events for the town too.
Big show court with better seating, gym, rebound machine, showers and access for Shepparton Gators.
Shepparton community need this facility upgraded as at present there are too many basketball teams playing and 14 yo kids are out playing at 9:30pm on a weeknight.
Fantastic idea. Shepparton really needs better facilities for basketball and more courts.
Big show court, better grand stand, gym.
We need a whole upgrade to everything here, watch will bring more money into the town.
Better basketball facilities required.
Better facilities needed, upgrade would benefit teams and younger players.
New courts would be brilliant, I have been playing on these courts since I was little, definitely needs an upgrade.
Would be excellent to improve playing times. Will help for travelling players.
New plans look great, the need for new courts in Shepparton is emense.
New Stadium looks great, Stadium definitely needs upgrading!
Big show court, better quality grandstand, rebound machine gun, gym.
The proposed development put forward by the Greater Shepparton City Council will be huge for Shepparton. Basketball and other sports are increasingly growing and becoming a more bigger part of Shepparton. This creates the opportunity for growth and jobs in this area. A very exciting prospect.
Great idea!
Two new courts will be amazing! Think of the events we could have!
We need a upgrade now.
More courts more money.
The more we work together, the better this place will be.
Fantastic proposal. Basketball is getting more popular and more courts mean more value to families, players and fitness. Can be utilised for many other purposes.
Yes we need extra courts, courts we have need fixing.
New courts, better facilities, better junior program.
Finally some new courts, 2 is great, 4 would be awesome, better facilities.
Please, please, please upgrade everything with extra courts!
More basketball courts are desperately needed due to lack of inferstructure and causing late times for games, we need them now, our rates are for these aswell as the other council plans.
Much better facilities are needed for reasonable playing times, so that all the teams that play now and into the future are easily catered for.

I feel that we are in desperate need to have new courts. Due to the large number of children who play and the number of exceptional players who have great potential.
It has been some time since the Shepparton Sports Stadium has had some kind of upgrade and it is well overdue. The facilities look tired and outdated and I believe are inadequate, especially if you compare them to other regional facilities. If Shepparton is to become a leading regional sporting town an urgent upgrade is required. I would like to see additional playing courts so that more games are able to be scheduled. It would also be of benefit to have training facilities and adequate seating so that when tournaments are being held we are able to cater to the needs of any attendees and that we have an adequate 'show court' for these games.
My suggestion is that we should look at including an upstairs (mezzanine) function and café/bar/restaurant/bistro area. With the construction of the sports precinct there needs to be a significant facility that can be used for formal and informal functions as well as dining etc. This area would overlook both the stadium courts and the sports precinct (hence a glass design). If we are wanting to draw and retain people in the precinct then we need to offer comprehensive facilities. If we're wanting to create a "premier sporting precinct" then it's critical to have a formal functional area and offer café and dining experiences. Obviously you would also need to explore tendering for the running of such a business. <u>it might also be worth thinking about creating a space in case a sports shop would like to conduct business from the premises</u>
Dear Council I would like to express my unreserved support for the proposed new stadium, having supported my son to play basketball over the last 7 years, and also being involved in Euroa Basketball association, I would have to say that Basketball is a sport truly deserving of having every effort made to promote and support it in our community. I have found basketball as a sport to be very inclusive, non judgmental, very supportive to juniors, lots of potential pathways for sport development, and is excellent at promoting good health messages to our young people. Basketball Victoria's involvement in youth is exceptional and there is no culture of alcohol to worry about, something you can often find in some football and cricket associations. The Shepparton Gators are a great role model for our young people and it would be fantastic to support them in a facility that allows more seating and one we can be proud of when teams travel to play in shepparton. I really believe this proposal needs full consideration and I hope it succeeds as it will create a wonderful future for basketball in this region.
The current stadium is extremely outdated and remains unchanged since I played basketball there twenty years ago. We need to modernise the stadium, more basketball courts would be great so that games did not have to be played so late in the evening.
It's fantastic that squash is being considered as they are producing some great results from their members at all levels. Most recently the juniors who have completed for Victoria. All in a building that badly needs attention
New squash courts would be great for the shepparton area. As I am wanting to turn professional in the next few years it would be great to have good facilities to use. Having the squash courts in the multi sport complex would boost numbers in all sports, and would also draw more numbers to squash itself.
would be fantastic to get new squash courts for the squash community, the Wangaratta set up at hp Barr reserve is fantastic
The plan is impressive, however I am a little bit concerned that squash is only included as "can be added at any time". By your published figures, squash would provide 33% of the attendees for only 14% of the funding outlay. Squash is expanding rapidly under the management of the G.V. Squash Club, which is a volunteer organisation. We have an uncertain future in our current location and would potentially grow even more if the Club could be provided with a secure home. I think the project is great but would appreciate a more certain future for our great sport.
I play squash twice a week and have for many years. I am very much in support of new squash courts.
I've played in a few Masters Squash Tournaments over the years. I always found the courts, and the amenities drab and outdated. If they could be 'spruced up' or new ones built it would be terrific for the town, and the numerous squash players from all over Victoria who play in the Masters tournament there.
It would be fantastic for the Shepparton Sports Stadium to incorporate 6 squash courts into the redevelopment. I have been playing squash at the only centre in Shepparton for the last 26 years. Squashies are very passionate about our sport and to have a modern facility which to play in would be like a dream come true. It would also encourage other people to take up the sport being in a facility where everyone can see what sports are played there. In the years that I have been playing especially in the last 4-5 years our junior participation has grown immensely with my own son playing also. We hold tournaments at our courts which brings in quite a lot of revenue to the Shepparton businesses with food, accommodation and shopping and some participants also get to take in some of the tourist sites in our area. Please consider the inclusion of the squash courts into the redevelopment so that our junior participants can continue to play their chosen sport and that <u>squash can continue to grow. Thankyou.</u>
Would love to see a skating rink. Somewhere we can take our kids on a regular basis. Fun for both parents and children and a way for us all to have enjoyable exercise
I think that modern new squash courts is a great idea as long as they are designed in consultation with the squash club, the current courts do the job but the whole facility is sub-standard
We would love to see new squash courts built in conjunction with the upgrade at the SPORTS STADIUM. and sports stadium as the key word. It is an ideal venue. And being new would be ideal for hosting International and State tournaments. giving Greater Shepparton opportunities to stimulate our local business. Squash has a great following of juniors and Senior players. The club runs it voluntarily and all the effort and ground building, introducing new players to the sport would be great for it to be Community owned as it will be a legacy forever. The club can show that it runs at a profit and would not be a burden on the council financially. Upon being in a complex that is open heaps more hours this will give a huge opportunity to schools and the public to get involved and play this great sport. The opportunity for people to see squash upon being at the centre for Basketball, badminton, table tennis etc. will also give it a much higher exposure which in turn will encourage more members and use of the facilities. Having movable side walls will also open up this area for multi purpose usage / functions. The on going running cost and maintenance is very little so once again no burden on the community. It can and does support itself. <u>Look forward to the progress and a positive response for squash.</u> <u>Thanks for that and great to see the project progressing.</u>
As a past player and current Shepparton Junior Gators coach, this proposed plan would be perfect for Shepparton. There is high demand for basketball, both from a game and training perspective. This is due to the success of the Shepparton Big V team, creating interest in the sport. This interest will grow with the addition of two courts/show court. If this plan goes ahead I feel that Shepparton can be in division 1 Big V basketball, a potential tourist drawcard when teams travel from Melbourne to Shepparton. This puts money into local businesses, something that needs to be done. By having extra courts available we can have extra kids to develop, meaning basketball has a sustainable basketball team in Shepparton. When I was younger, every Saturday night I would go with team mates down to the stadium to watch the men's team play and I used to idolise the players and aspire to be at that like that, but there is no room for them all, we need that show court <u>for Shepparton to grow as a basketball city</u>
The Greater Shepparton community needs these improvements to our local sports stadium in order to offer sporting opportunities to our children. Expansion will allow myself and my children to play Basketball/netball at more suitable times. It will also be excellent for cheering on our Gators.
It is about time that this gets under way after 15 years of promises we have done our bit and it is time construction started especially when the rest of the precinct is being update the dilapidated building at the front needs to be the centre piece for this area.

<p>As a keen member of GVSCI know that Shepparton needs a secure future now. We do not have that under the current arrangement of a private owner living outside of the area. Maintenance is nil and our tenure is uncertain. We currently have a great administration and an outstanding junior programme. Thanks to the Council we recently held an international event. Another major flop for this NOT PROGRESSIVE city, O.K. if you like the snow chalet look, get another plan drawn up, by the way I am at the Shepp Sports Stadium at least twice a week</p>
<p>Squash is good but we need new courts because they're a bit old and need renewing =) Squash is great fun and should be enjoyed by all keeps people fit and active and good time to spend with friend.</p>
<p>It is great to see plans are in place for the development of a new stadium. We live 30 minutes away but use the facilities 2 to 3 times per week with the families involvement in basket ball and table tennis. I can see an enormous benefit to develop a squash center as part of it. Squash is growing in the area but is limited at its present location because it's only open after hours and I know of many working people who would use the center at lunch time. It would be a great addition as it can be administered under the one roof any time of the day as is the Wangaratta HB Barr reserve with many facilities in one complex</p>
<p>I believe these works are a necessity. I have been involved in Basketball in the Shepparton area for the majority of my life and of late have found that the current facilities can not support the demand. I presently play in the mens domestic competition and we often find ourselves playing extremely late time slots as their are insufficient courts. Having played and coached at other rural stadiums Shepparton is far behind. I believe that with this upgrade and the addition of new courts Shepparton Basketball will be held in a much higher regard and these works will allow other sports to utilise the stadium as well.</p>
<p>I think the Shepparton Sports Stadium Future Direction Plan is nothing but a positive for the Community and visitors to the area. Sport is so important for children and adults in the area and the subsequent benefits to the community (fitness, friendships, confidence, mental health etc) and local business are inevitable. This would be something Shepparton could be proud of!</p>
<p>I strongly support the inclusion of squash courts as part of the complex and would suggest that this should be including early on in any upgrade of the facilities I have participated in a number of sports including rugby, tennis, golf, triathlon, marathon running and squash at a very high level including being a selector of New Zealand national squash teams for a number of years. Squash is one of the most beneficial sports in maintaining ones fitness and health as well as being a very "social" sport thus contributing to maintaining ones personal well being. The current GV Squash club has been able to attract and hold major events such as this years PSA International Squash Open which brought athletes/visitors from overseas and around Australia. New Squash courts/facilities would ensure that such events could be secured into the future bringing significant economic benefit to the community.</p>
<p>I have used this facility on and off all my life. I played badminton and table tennis when I was younger. I've been to many events there, and have enrolled my sons in many school holiday programs, also have done Aussie Hoops after school and Futsal competitions too. My sons also play basketball every week in domestic competition. At many times during their night of play ranging between 4.10pm to 7.30pm which can be inconvenient. They also train for Gators Squad teams and have training there on Sundays at the moment (due to having no other available times) Going to other stadium facilities for tournaments it's interesting to see the fantastic ways other towns have created their facilities and what they have on offer. Bendigo (especially), Albury are good examples. We recently also spent 2 days at a Melb United Basketball holiday clinic at North Balwyn and this facility was beyond amazing. Fantastic large courts, with room around the sides and fold down individual seating for the main court; this facility had Sporting goods/clothing Retail shop, Yoga rooms, Gym equipment room, Café with tables (not in the middle of the entrance like Shepp) and very modern and clean and new in appearance. Shepparton as a comparison is embarrassingly drab, old and not functional for comfortable seating to watch games. I fully suggest going to watch the games when there are many people being accommodated when the Shepparton Basketball Tournament is in full swing on the first weekend of December. People from all across the state come to compete in all ages groups from U12 to U18 boys and girls sides. There are games held at the stadium of course which would be the busiest, but to accommodate all the others, we have to be playing at Guthrie Street, Baptist Church, Christian College, Tatura even. Back several years ago, I used to watch what was then the GV Giants (now Gators) and the stadium show court grand stand seating was fully packed, these days the crowds just aren't there, it's not promoted well enough to go watch them, and it's not a comfortable venue to bring a lot of people in anyway, the café is useless to cater to many people. It's sad to think that in all these years, there really hasn't been anything done to make the facility a newer place, not even updated toilet areas, or entrance, or better seating. Just some thoughts I wanted to share...</p>
<p>This is a really great idea and has been required by this Town for a very long time. The basketball community is very large in Shepparton and the fact that there are not enough courts for our children to play and train on is a huge issue. Let's hope that this plan will eventuate and help Shepparton to grow.</p>
<p>Great to see some new squash courts included in the facility. Pity there aren't more As a squash player, the courts in Archer Street are in need of maintenance, the showers & toilets are at a low standard and the parking can be quite dangerous there. Having courts included in the stadium would be a great asset to the community and I like the way that flexibility in court design has been included in the plan</p>
<p>We are new to the world of Basketball this season and my autistic son would be crushed if he couldn't play. We are enjoying the experience greatly and look forward to many more seasons at the stadium .</p>
<p>Honestly it's something but the old courts do not meet legal run off space or are adequately air conditioned or lit. There still are not enough courts available for b'ball and netball too. I'm sure many netball leagues and associations would love to train indoors. Why not add a gymnastics or dance centre too. As both a school group user and parent and community user this facility is way too small for the size of shepparton. Especially if we want to attract high caliber sporting competitions to our town to inject money into tourism here. In a nut shell upgrade existing facilities and add more b'ball courts/netball courts to the plan.</p>
<p>Looks like a great plan and its great to see this facility getting a new lease of life. There is one aspect im still not sure will be resolved with the proposed plan. Currently the foyer area does not facilitate the traffic for basketball registration, cafe and general entrance traffic (too crowded). Looking at the new foyer proposal...it does not appear to accommodate (visually i might be wrong) the player traffic flow from entrance to paying ball money. Unfortunately I couldn't get the feasibility study document to load due to an extremely slow web site....but the other point I wanted to raise was the use of the stadium for other events like trade shows etc. Is the stadium's proposed plan designed to accommodate such events like the bendigo stadium does? Or is this the role of the showgrounds facility?</p>
<p>I am writing to indicate my support for the Shepparton Sports Stadium redevelopment. The proposed plan would be of huge benefit to our local community and is long overdue. As a local Health and Physical Education teacher at Wanganui Park Secondary College and regular user of the stadium as a basketballer I can only see positives in this development going ahead. The ability to attract major events to Shepparton is also a major benefit. It would be great to showcase our local talent in all of the sports mentioned and can only be a positive indicator to encourage wider participation in physical activity for all community members.</p>

<p>Coming from a background in design (and even interior design), I know how important a visual statement can create to make people feel part of the environment they're in. I remember watching on the news months ago about how Melbourne is trying to either 'build upwards' the city or entice families to move to major regional cities - Shepparton being their prime example. In order to entice people out of the city, there needs to be facilities that meet their expectation, otherwise they view the town as just something not up to their requirements. This new development proposal is fresh and modern in its appearance which would appeal to not only to "Melbournians" but also to citizens of the Shepparton area.</p> <p>I personally believe that an environment should reflect the atmosphere it intends to create. This new facility will provide a clean and crisp environment that people will want to come to participate in - getting them off the street. An environment that is left neglected and becomes run down rots into an embarrassment to the community.</p> <p>If this new facility does not go ahead sometime in the near future, it will be left alone and the current facilities will eventually tire out.</p> <p><u>Please highly consider this new development to proceed. Thank you.</u></p>
<p>Wow!! What a welcome plan!! As a past club president and GSBA Board member and a current rep coach this plan is extremely encouraging. With the lack of basketball facilities in town we have endured awful game times (either too early in the afternoon or too late at night) which has restricted participation. To get a court for training is a complete nightmare and again this affects participation. This is a town that prides itself in its sports and a premier sports stadium is perfect!!</p>
<p>As a long time user and previous employee of GSBA I have seen kids and teams turned away due to lack of court availability. With teams at capacity and no more court space to create extra teams some kids have been turned away. What happens to these kids after they have been turned away, we don't know. With teams at capacity (more than ideal numbers for local comp) players do not get as much court time so the enjoyment of the game goes. Roughly about 5 years ago domestic basketball was at a low point. Over the past few years the numbers have increased beyond what we could've hoped (with room for more growth with extra courts) and it's great to see the buzz around the stadium. With the greater participation it has also meant that games have had to start much earlier. This also means many parents are unable to watch their kids play as they are still required to work. I'm also coaching for a Club that trains there and because of the earlier start times we can't get a full hour for training. This makes it very hard trying to teach a team of kids that have not played before.</p> <p>With greater participation domestically means hopefully greater number of players trialling for our Rep teams. The more kids to pick from the more competitive we may be at tournaments which will get the Shepparton name out there even more. As for our junior tournament in 2012 we had to turn away teams because we could not cater for them. Just think what having more teams would do to Shepparton tourism. If we had more courts we could run an under 20's comp in our tournament. Keeping this age group playing is vital for our Senior teams especially the Women's program.</p> <p>I just want to finish off by saying that I grew up at the Shepp Sports Stadium. I played domestic and rep, coached domestic and rep and refereed locally and at tournaments. You could say the stadium was my second home. My parents had split and basketball was a great thing to help me through, even though my mum couldn't afford a lot. Many people would say to my mum 'aren't you worried about the girls always being at the stadium?' and her response was always 'no, why should I? At least I know they are not out on the streets running amok. 'This is what I want for other kids, to feel a sense of belonging somewhere and not be turned away simply because we have no space left in teams and no court space for extra teams.</p>
<p>Good plan - need show court with increased permanent seating and retractable seating. The stadium needs to be able to compete with facilities in other regions and this goes a long way to enabling us to do so. Think that being able to have option of using facility outside of sporting events is a good one. Definitely need improved amenities, roof leaks but also very hot in the summer. Air conditioning is installed but not very effective. Has increased parking space been included in plan?</p>
<p>Very happy to see that squash is in the mix for new facilities. Centralising our indoor sports in the one complex can only help to promote our city's reputation as a sports destination. It is also great to see the number of juniors playing the sport which helps to keep them away from the wrong influences.</p>
<p>The plans are impressive, especially the proposed squash courts. Squash is a growing sport in Shepparton, especially the Juniors and the sport needs a secure home. I think that the squash courts should be constructed early in the proposed development considering that the cost (\$1.3 million) is a small part of the total outlay</p>
<p>The plans look good. I would like to give a boost for the squash courts as squash does not get much publicity in the press. Junior squash in Shepparton is growing rapidly and the future at the current courts is uncertain. We need a permanent home.</p>
<p>It will be great to see all the facilities modernised and additional seating to watch more sporting events. It will appeal to a wide audience</p>
<p>I play masters squash and grand Prix squash tournaments that have been run up there and are well attended and it would be good to see the future of squash in Shepparton improve through the new sports stadium.</p>
<p>the development of the the new Shepparton sports stadium would be crucial in improving the future of squash in Shepparton with their tournaments etc which also helps to boost the community etc.</p>
<p>It is a good start for basketball for the centralized location and showcasing our talent with the tow show courts. there needs to be a plan in place to try and upgrade the complementary facilities i.e. schools.</p>
<p>The redevelopment of the Sports Stadium is well overdue and the vision outlined in the feasibility study and layout plans is worth pursuing as a long term investment for the community. A genuine need and demand exists for the stadium redevelopment. I doubt that six squash courts are warranted and suggest four would accommodate current and future demand.</p>
<p>Further review is required to determine the final preferred seating capacity and viability. Design should allow for a footprint that commences with an initial minimum 1500 seat capacity, with allowance for future expansion to 3,000.</p>
<p>The Council should also give consideration to the formation of a skills based advisory group for the Stadium and Shepparton Sports Precinct. This group would <u>provide advice to the Council on all aspects of the development and management of the site.</u></p>
<p>From Bill McCarthy: The City Of Greater Shepparton's proposal for vast improvements to the Shepparton Sports Stadium is to be commended. (see full letter as attached)</p>



487 King St West Melbourne VIC 3003
PO Box 60 North Melbourne VIC 3051
P 03 9321 2222
F 03 9321 2233
E info@netballvic.com.au



31 October 2014

Paul Elshaug
Team Leader Leisure Facilities
Greater Shepparton City Council
paul.elshaug@shepparton.vic.gov.au

Dear Paul

Re: Shepparton Sports Stadium – Future Direction Plan

Thanks so much for the opportunity to provide feedback with regards to Shepparton Sports Stadium Future Direction Plan for Greater Shepparton City Council. Netball Victoria (NV) acknowledges the importance of identifying sporting infrastructure and developing site specific future direction plans.

With the continual growth and changes occurring within in the municipality, NV appreciates being asked to provide input and advice on plans that address increasing indoor stadium pressures, whilst also ensuring they are safe and compliant. It's fantastic to see the Council being proactive in this space.

Netball is the most popular female team sport in Australia. The provision of safe and compliant facilities for netball participants is vital to ensure the continued growth of the sport. Not responding to the current need will result in declining participation levels.

The below feedback is a combination from both myself and your Regional Development Manager – North, Pam Ferarri. We are both available to chat to you further about our response if required.

To support our feedback, we have provided below a summary of our hierarchy of facilities with additional supporting infrastructure requirements and the type of events that each hierarchy attracts. Please also note the existing specification resources (Netball Court Planning Guide and Sports Lighting Guide) are available on the NV website: <http://vic.netball.com.au/support/facility-development/>

We would also like to reiterate the previous conversation and recommendations that have been provided to Council in the past around the minimum facility requirements to host events:

- A minimum four indoor court facility can service:
 - o Clinics
 - o Association Championships
 - o School Championships
 - o Regional State League (Goulburn Regional State League)
 - o VACSAL Tournaments (including teams, officials, spectators)
- A minimum two indoor court facility can service:
 - o Regional State League (RSL)
 - o Clinics

In the past, the number of teams for RSL has been limited due to the number of available courts at compliant facilities. There is the potential for number of teams to increase if there was compliant facility.



www.netballvic.com.au

Some overall themes we picked up that we support:

- Expansion of the facility will allow netball to grow
- Support the development of a number of compliant netball courts within the City
- Our netball events will enhance the reputation of the stadium and positively contribute to tourism in the City
- This new development would encourage NV to host a range of events at the stadium, including Regional State League, School Championships, VACSAL tournaments, Association Championship and player, coach and umpire development clinics.
- Your show court with 500 seats supports a NV Regional Netball Facility

Regarding the stadium development please ensure that:

- Courts and run off areas are built to compliant standards and that NV are engaged in this process for input and advice.
- Your terminology on page 67 with two compliant courts – can this please be written that its compliant netball courts.
- Please ensure that its 3.05m clear run off space between any obstacle and the netball court side line (this includes seats, light poles, shelters, score benches etc)
- Adequate change rooms are supplied. Its unclear from the diagrams provided as to the breakdown of showers, toilets and accessible facilities.
 - o 4 change areas (each with minimum 3 toilets and 3 showers)
 - o Male and Female umpire change room (each with 1 toilet and 1 shower)
 - o Officials & Control Room
 - o Function Space
- Please ensure a male and female umpire change room is built as we cannot have a young girl showering in the same space that an older male is getting changed.
- Suitable circulation space for spectators is provided (an additional 1.5-2 meters, which includes seating)
- Seating is installed outside the required run off space of 3.05m
- Provision for baby change rooms is made

Some overall themes we picked up that we support appreciate you looking further into:

- With the number of sports that are being catered for within the stadium, we have concerns with the line marking of netball courts that overlap two basketball courts. This can certainly be done but depending on the number of sports lines already down, it may provide a very confusing experience for players, spectators and umpires.
- NV continues to support 3.2.4 Best Value Review (2004) which recommends the addition of four new netball courts, high quality social facilities and a show court.
- We're not sure of the planned roof height or requirements for Badminton and Volleyball (page 28) but to comply to international standards, the roof height needs to be 8.3m.
- In principle, we support the comments made in 6.6 by the Shepparton Netball Association on page 33.
- The information in 7.2.4 on page 37 is correct
- Our state participation average is 2.3%

Shire Wide Comments**Provision of Netball Change Rooms and Other Facilities**

- NV is currently working on a Preferred Facilities Requirements Manual. I have summarised this below for your reference but please consult with NV prior to adopting these specifications.
- Its also important to bring to your the need for two umpire change rooms. NV is of the strong belief that we cannot endorse both male and female umpires (of all ages) sharing the same change room, there a separate male and female umpire change room needs to be accounted for.
- Its pleasing to see dedicated meeting room rather than using social rooms to accommodate meeting requirements as it provides practical options and provides to the administer the sport.

NV direction in facility planning

It has just been announced that NV was successful in receiving funding through Sport and Recreation Victoria's Community Facility Funding Program to establish a strategy to guide the development of Association and League netball facilities within each NV Zone throughout Victoria, with our focus based on the most critical information to upcoming / future requirements to ensure facilities are catering for growth and are compliant / playable. This funding will also further develop and test the *Netball Victoria Draft Preferred Facilities Requirements Manual*. This will provide a base level understanding of the underlying economics and justification of the NV hierarchy of facilities along with minimum standards and requirements to assist all parties in planning and developing facilities (LGA's, Associations/Leagues, NV, SRV).

Technical Services

I'm not sure if you are aware or not but NV have engaged with 2MH Consulting to be our technical service providers to the community. 2MH understand the specifications of both indoor and outdoor netball and tennis facilities and provide a technical consultancy service for the design and project management of netball court construction. Netball Victoria's partnership with 2MH makes available the latest technical requirements for netball court construction and a close working relationship with the Netball Industry to ensure a quality outcome. From a netball perspective, it would be ideal if 2MH could be engaged with future netball works within your Shire. Their details can be found through our website: <http://vic.netball.com.au/facility-advisory-services/>

NV Facility Gaps, Issues and opportunities

- Netball makes a significant contribution to the social, economic and well-being of Victorians.
- Each indoor netball court caters for 400-600 netball players per annum and an outdoor court catering for 200-300 netball players.
- Research undertaken thorough our 2010 Facilities Master Plan identified that demand for the sports in growth areas has been underestimated by planners and that an appropriate ratio of 1 indoor court: 10,000 (residents) if dedicated solely for netball. Otherwise in the range of 3 indoor courts: 10,000 residents if allocated across a range of indoor sports is required.

- With regards to the Country Football Netball structure, NV bases its demand for an additional lit court when the club has approximately 60 registered members.
- Many major indoor sport centres with the capacity to cater for unmet netball participation demand are already committed to catering for other sports or provide netball with access for limited periods in traditionally high peak usage times.
- A significant percentage of local associations are conducting competitions and programs on court space which do not meet NV's facility requirements – which is also highlighted in your draft netball strategy.
- A number of Associations utilise courts that are not fully compliant with today standards exposing their insurance cover and reduces the level of event these facilities can attract
- On average, each netball player participates in 1.5 hours of on-court netball activities per week or approximately 65 court hours per annum. Participation for indoor players is 28 peak hours per week.

Moving forward

NV looks forward to working with you and the Council to continue to grow netball! We welcome the opportunity to be engaged in strategic discussions around the new and future developments especially looking at pages 26 and 27 around your facility provision overview. It would be great to cross reference your facility data (both indoor and outdoor) with our to ensure accurate information is collected (especially around access, lighting and court compliance).

It would be great if Pam and I are able to meet with you further to discuss our future involvement into precinct planning.

Should you need to clarify any of the information enclosed, please feel free to contact me via phone on 03 9321 2241 or via email at amber.koster@netballvic.com.au

Kind Regards,



Amber Koster
Facilities & Development Manager
Netball Victoria
Cc: Michelle Plane, Pam Ferarri, Katie Redding

Netball Victoria Facility Hierarchy

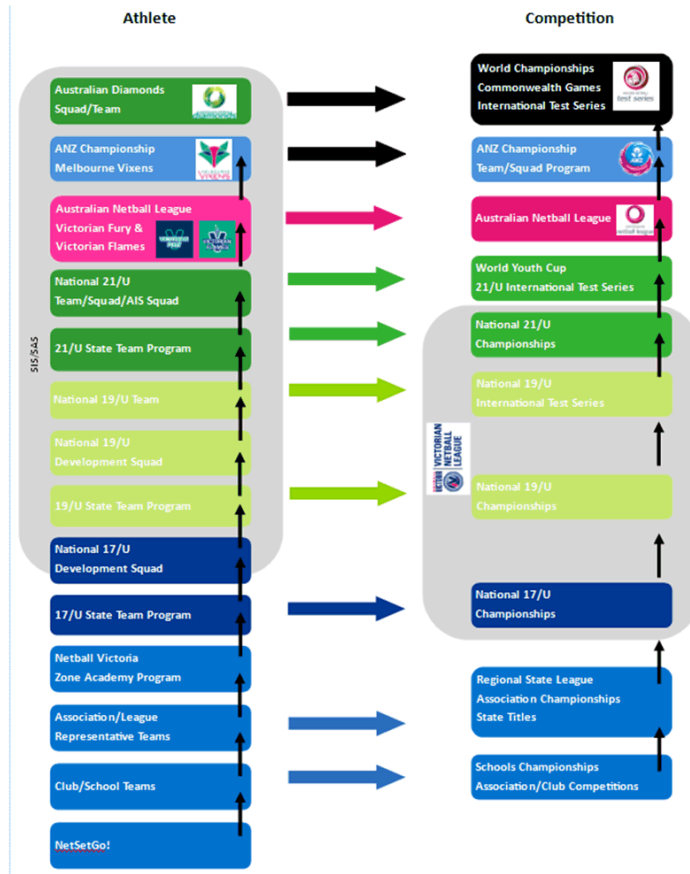
Facility Category	Facility Components	Key Events	Catchment Area
State Netball Facility	<ul style="list-style-type: none"> - Minimum of 6 indoor courts suitable for competition netball - An events area to cater for 3,000 spectators - Major corporate and media provision - Capacity for facility to cater for major events up to 8,000 spectators. 	<ul style="list-style-type: none"> - International tournaments and events - National tournaments and events - Victorian Netball League - Regional State League - High performance training - State based competitions and events - Resource for Clubs & Associations - Association Championships 	Statewide
Regional Netball Facility	<ul style="list-style-type: none"> - 4 indoor courts suitable for competition netball - 4 outdoor netball courts linked to indoor facility - Minimum spectator capacity of 900 (including 500 spectators on show court) - Home to a strong local / broad-reaching Association. Netball to be scheduled for at least 50% of peak usage times in indoor centres. - Support amenities to include: <ul style="list-style-type: none"> - 4 change areas (each with minimum 3 toilets and 3 showers) - Male and Female umpire change room (each with 1 toilet and 1 shower) - Officials & Control Room - Function Space 	<ul style="list-style-type: none"> - National championships - Victorian Netball League - Regional State League - High performance training - State based competitions and events - Resource for Clubs & Associations - Association Championships 	Regional

Facility Category	Facility Components	Facility Components (Outdoor Only Option)	Key Functions
Sub-Regional Netball Facility	<ul style="list-style-type: none"> - 3 indoor courts (minimum 2) - 4 outdoor lit courts - Minimum spectator capacity of 500 (including 200 spectators on show court and 200 on outdoor courts) 	<ul style="list-style-type: none"> - 8 outdoor courts (majority lit) - Minimum spectator capacity of 200 <i>* An outdoor facility is limited in its role as many key regional and sub-regional events require indoor court provision.</i> 	<ul style="list-style-type: none"> - Victorian Netball League (indoor only) - Regional State League (indoor only) - High performance training (indoor only) - Netball Victoria competitions and events - Resource for Clubs & Associations - Large local Association/s - Regional Activities - Football / Netball League
	<ul style="list-style-type: none"> - Support amenities to include: <ul style="list-style-type: none"> - 4 change areas (each with minimum 2 toilets and 2 showers) - Male and female umpire change room (each with 1 toilet and 1 shower) - Officials & Control Room - Function Space and Circulation space 		

Facility Category	Facility Components	Facility Components (Outdoor Only Option)	Key Functions	Catchment Area
Local Netball Facility	<ul style="list-style-type: none"> - 2 indoor courts - Seating for 100 spectators 	<ul style="list-style-type: none"> - 4 outdoor courts (at least 50% lit) - Seating for 100 spectators 	<ul style="list-style-type: none"> - High performance training Feeder (indoor only) - Netball Victoria competitions and events - Resource for Clubs & Associations - Large local Association/s - Regional Activities - Football / Netball League 	<ul style="list-style-type: none"> - In M have 10kn - In Re catch radiu
	<ul style="list-style-type: none"> - Support amenities to include: <ul style="list-style-type: none"> - 2 change areas (each with minimum 2 toilets and 2 showers) - Male and female umpire change room (each with 1 toilet and 1 shower) - Officials & Control Room - Function Space - Circulation space 			
Neighbourhood Netball Facility	<ul style="list-style-type: none"> - Indoor court - Change rooms and flexible space for club activities. 	<ul style="list-style-type: none"> - 2 lit outdoor courts 	<ul style="list-style-type: none"> - Resource for Clubs & Associations - Local Associations and Clubs - Regional Activities - Football / Netball League 	
	<ul style="list-style-type: none"> - Support amenities to include: <ul style="list-style-type: none"> - 2 change areas (each with minimum 2 toilets and 2 showers) - Male and female umpire change room (each with 1 toilet and 1 shower) - Officials & Control Room - Function Space - Circulation space 			
Football / Netball Club	<ul style="list-style-type: none"> - N/A 	<ul style="list-style-type: none"> - 2 lit outdoor courts 	<ul style="list-style-type: none"> - Club training and competition - High Performance Training Feeder - Home of Netball Football League club/s 	
	<ul style="list-style-type: none"> - Support amenities to include: <ul style="list-style-type: none"> - 2 unisex change rooms (25m2 each)(each with 2 showers and 2 toilets) - Male and female umpire change room (each with 1 toilet and 1 shower) - First Aid room - Control room - Circulation space - Function space 			

Netball Victoria's Participation pathway

Hierarchy of Facilities





Please quote our reference in your reply
Our Ref: DH:dh 1212/14

27 October 2014

Community Safety Strategy
Greater Shepparton City Council
Locked Bag 1000
SHEPPARTON VIC 3632

Dear Sir/Madam,

SUBMISSION REGARDING THE SHEPPARTON STADIUM FUTURE DIRECTION PLAN

Basketball Victoria Country appreciates the ability to provide feedback to the Greater Shepparton City Council regarding the future direction of the Shepparton Sports Stadium.

Sport and recreation has always been important to Australia and Australians as an integral part of lifestyle, a source of national pride, and a part of the country's culture. During the past few decades 'sport and recreation' has shifted from a collection of pastimes, organised and enjoyed by volunteers, and emerged as a full-scale industry within the Australian economy, making substantial employment and financial contributions in all regions and at all levels (local, State and National). Indeed, over the 110 years from Australian federation in 1901 to 2011, the number of people employed in Art, Sport and Recreation has increased from just 6,192 to 151,575.

Globally, sport is a growth industry, and is an integral part of the national economies and traded services, with elite athletes in high profile sport such as basketball, football, cricket, golf, tennis, rugby codes, motor sports and horse racing contributing to both domestic and export economies. Australia, and the entire globe, is entering a new era in which the growth industries (and the industries in which innovation and technologies will be concentrated) will be 'lifestyle and sustainability' industries.

Source - Basketball Victoria National Basketball Census 2013

The Greater Shepparton Region and in fact the Hume corridor is an important part of the basketball landscape in Regional Victoria. This year Basketball Victoria Country (BVC) has utilised the current stadiums in Shepparton for a variety of events and this has included:

- Vic Country Under 16 State Team Try Outs
- Vic Country State Team Training Camps
- National High Performance weekly training sessions and frequent High Performance camps
- Vic Country Development Teams training sessions
- Vic Country Development Team camps
- Australian Country Junior Basketball Cup lead up events and training.

Overall the above has included approximately **1000 participants** attending the Greater Shepparton area.

BVC's governance structure has also utilised the facilities for meetings with the BVC Commission's October meeting taking place at the Stadium on Saturday 11 October 2014.

1



All of this contributes to the importance that BVC places in having quality stadiums with appropriate facilities to utilise for a variety of activities.

The Greater Shepparton Basketball Association and Council have also won the rights to conduct the popular Under 14 Country Basketball Championships in Shepparton in April 2015 and 2016. The event held over three days will have an approximate economic benefit to the local area of about \$2m and will utilise multiple facilities.

All of this assists in the growth of the sport in the local area. BVC have also this year introduced an Online Registration System for the 42,000 participants in Regional Victoria and this process will enable BVC and associations like Shepparton to track and record every basketball participant. The information will also provide other important demographic information that will enable clearer planning for the associations.

The GSBA is committed to growing participation numbers and is closely following the mantra set down by the State Government in this area by providing opportunities for more people to be more active, more often

The Victorian Government is passionate about increasing participation in sport and recreation across the state. We recognise that the benefits of sport and recreation extend beyond the economic stimulus our investments provide to local communities, to building strong and healthy communities that get more people, more active, more often.
Hugh Delahunty, Minister for Sport 2013

It is important that local sport and recreation facilities are more than just places where people train and play games. They are a vital resource where people can come together, develop talent, share their love of sport and develop as quality community members.

BVC and GSBA are committed to the long term development of the Shepparton Sports Stadium and the development of more courts for the utilisation of the local community and the ever growing need of the larger Regional Community through events. We believe that the introduction of two more courts at the facility will have an immediate impact on:

- increased sport and recreation participation
- increased access to sport and recreation

And opportunities

- continued planning of sport and recreation facilities
- providing innovative sport and recreation facilities

Strong, active and healthy communities such as Shepparton need well designed and managed facilities for sport and recreation activities.

BVC supports the introduction of two new courts as part of stage 1 of the new development as outlined in the Future Direction Plan Report.

BVC would agree with the findings included in the Future Direction Plan report that further development of the Stadium will only increase the ability for the area to hold/conduct major basketball events.

A handwritten signature in blue ink, appearing to be "NCT".



BVC has partnered with Netball Victoria for facility use planning. Both organisations have conducted audits that expose a severe shortage over the next ten years based on current population trends.

The combined base of the two sports in Victoria is in excess of 450,000 participants and recent studies indicate that a lack of facilities will limit future growth

Basketball is one of Victoria's most significant sport and recreation sub-sectors. The latest basketball economic assessment was conducted in 2012.

Basketball in Victoria:

- o Generated an estimated \$313.97 million in total economic contribution to the Victorian economy.
- o Provided remuneration (in salaries, wages and honorariums) to 5,459 people and directly supported 254 full-time equivalent jobs.
- o Attracted 1.87 million non-playing participants and spectators to basketball matches and events throughout the state.

The contribution of basketball around Victorian regions in 2012 was estimated to be 71.3% in Metropolitan Melbourne and 28.7% in Non-Metropolitan Victoria:

o	East Melbourne	\$103.8 million or 33.1%
o	North East Melbourne	\$30.6 million or 9.7%
o	South Melbourne	\$52.0 million or 16.6%
o	West Melbourne	\$37.7 million or 12.0%
o	Barwon Region	\$23.1 million or 7.4%
o	Gippsland Region	\$18.8 million or 6.0%
o	Grampians Region	\$15.1 million or 4.8%
o	Hume Region	\$11.8 million or 3.8%
o	Loddon Region	\$21.3 million or 6.8%.

Basketball is a large sector within the 'sport and recreation' industry in terms of:

- Number of participants (from entry level and grass roots social players through to elite competitors involved in state and national competitions).
- Numbers of spectators and other stakeholders.
- Employment and contracting.
- Expenditure generated.

All this activity generates economic activity directly and has an economic flow-on effect to other sectors of industry, such as:

- Insurance, legal, marketing and information technology
- Printing and media
- Health and education
- Retailing
- Sporting goods
- Construction (especially in construction trades)
- Accommodation and food service
- Transport.

The number of voluntary workers in Victorian Basketball in 2012 was been calculated from the survey of basketball organisations. The total number of volunteers in 2012 was 14,567 persons, providing an estimated 1,515,661 hours of voluntary input.



In 2012 Basketball Victoria undertook a State wide study on basketball facilities and the requirements going forward. It was found that the demand for increased facility space for basketball is being generated by a number of factors. These include:

- Increase participation by juniors. (GSBA ticks this box)
- The strength of the Victorian Junior Championship Friday night competition with over 1000 teams now competing (GSBA ticks this box)
- Increased development programs (GSBA ticks this box)
- Provision of successful pathways that retain players in the game for longer. (GSBA tick this box)
- High level of interest in basketball by new arrivals to Australia. (GSBA ticks this box and BVC are currently assisting in a CaLD Community program this year)
- Access for people of all abilities to participate. (GSBA ticks this box)
- Increased recognition in the community of the benefits of participating in basketball. (GSBA ticks this box)
- Promotion of the sport through high profile competitions and players. (GSBA ticks this box and continues to successfully represent the Region through their participation in the State Wide BigV Competition.)

Basketball Victoria is the largest and most successful state basketball organisation in Australia. Worldwide, Australia is ranked number three out of the 213 countries that play basketball by the International Basketball Federation (FIBA).



Access to all!

For any further information I can be contacted on 5440 6300 during office hours.

Yours faithfully,

DAVID HUXTABLE
MANAGER
BASKETBALL VICTORIA COUNTRY

Paul Elshaug

From: Executive Director <exec.director@squashvic.com.au>
Sent: Wednesday, 15 October 2014 11:16 AM
Subject: Feedback - Shepparton Sports Stadium

Squash & Racquetball Victoria is delighted to see provision for squash facilities in the Shepparton Sports Stadium Plans. Squash & Racquetball Victoria has just completed (through Sport & Recreation Victoria funding) a study into our squash venues in rural and regional Victoria. We have established a hierarchy for squash facilities taking into account:

- Use/Purpose
- Facilities Provided
- Management Preferences

The hierarchy suggests mandatory requirements for new facilities and aspirational targets for existing facilities. A copy of the summary report has been sent to Paul Elshaug.

The proposed 6 squash court Plan would see Shepparton classed as a 'regional facility' capable of being used for International, National and Regional squash and racquetball events, high performance activities as well as club, social, school and introductory programs. It would also provide a resource for surrounding clubs. The current GV Squash Club facility has 9 courts, although as per the recent international Shepparton Open held at the venue, not all courts are of a satisfactory standard to host national/international events.

Squash & Racquetball Victoria would recommend considering increasing the number of courts to 8. This would allow for (assuming movable wall technology) up to 4 doubles courts plus the opportunity to host national junior events (minimum court requirement of 8), Masters Games etc. Movable walls would also enable the flexibility to offer indoor soccer (as seen in this New Zealand venue - https://www.youtube.com/watch?feature=player_embedded&v=t91k7Y4thfU) or a function space (https://www.youtube.com/watch?feature=player_detailpage&v=ISmNLIqOnGo) or multi-purpose space for yoga, martial arts, kinder gym etc.

With the current 6 court configuration, in event mode there would need to be sufficient space for player movement behind courts, spectator seating, referee and marker positioning and an area for event management staff, display boards and tables. I note bi-directional retractable seating is included but if extended in event mode will this still provide space for the afore mentioned items?

If an 8 court configuration was considered, four courts either side running perpendicular to the current design (which would increase the building footprint), this would facilitate use by school groups as one teacher could observe all courts from a central position, the additional space between courts would allow inclusion of portable seating for events and an office space for club activities and event management may be possible. Note also that referee and marker positioning is traditionally above the court although with glass backs it can be done from behind the court on raised platforms (as per Wangaratta YMCA Indoor Sports Centre) or seating which is sometimes difficult for players to hear the calls. A small mezzanine area (as per MSAC) may be possible which would also increase spectator capacity.

I realise all drawings are still in the concept phase and we would be happy, along with the GV Club, to provide further input as the project progresses.

The Club's current lease situation as noted is tenuous, providing no long term security and making local investment in the centre an unattractive proposition. The GV Squash Club has been extremely active in recent years, especially in the junior area (5 of the 16 Junior State Team members were from the GV club) and with events. The inaugural Shepparton International was held this year and with Council committed to further support in 2015-2017 we look forward to supporting Council's vision of Greater Shepparton as 'the regional sporting capital of Victoria' and a destination of choice on the Australian Squash Tour.

Kind regards,

Fiona Young
Executive Director



Box 6, Melbourne Sports & Aquatic Centre, Aughtie Drive, Albert Park VIC 3206
T: 61 3 9682 2199 | F: 61 3 9682 2399 | E: exec.director@squashvic.com.au | W: www.squashvic.com.au

Squash & Racquetball Victoria



This e-mail message and any attached files may contain information that is copyright or confidential. It has been prepared for the private and confidential use of the intended recipient and may not be disclosed to anyone else. Any review, re-transmission, disclosure, dissemination or other use of, or taking of any action in reliance upon, this information by persons or entities other than the intended recipient is unauthorised. If you have received this e-mail in error, please notify us immediately by reply e-mail and delete this e-mail together with any attachments. Squash & Racquetball Vic does not represent this e-mail to be free from any virus, fault or defect and it is therefore the responsibility of the recipient to first scan it for viruses, faults and defects.

15th October 2014

To the Chief Executive Officer,
City Of Greater Shepparton,
Welsford Street, Shepparton, 3630

SUBMISSION RE: SHEPPARTON SPORTS STADIUM – FUTURE DIRECTION PLAN

From Bill McCarthy

33 Wright Avenue, Shepparton, 3630

The City Of Greater Shepparton's proposal for vast improvements to the Shepparton Sports Stadium is to be commended. The council has shown enterprise in seeking opinions from stakeholders and other interested parties regarding such developments as the proposed new Shepparton Art Museum, the McEwen Reserve upgrades, and now the stadium development. It is obvious that the council will need large amounts of finance, from either or both the Federal and State Governments, and will need to supplement this with council money to achieve the developments, which have been variously suggested as costing \$16 million dollars, or \$18 million dollars. The actual cost will be determined when a project team looks at the various needs, and obtains tenders. Realistically, this may mean some variations, or even the deletion, of some of the very worthwhile developments being proposed.

THE NEED IS GREAT

Shepparton needs the proposed improvements to be ranked with first class stadiums like Bendigo and Ballarat, to attract big sporting and entertainment events, such as country, state or national championships, and national standard squash titles.

It should be noted that Ballarat is now working on a stadium project quoted as costing more than \$25 million dollars, and that Bendigo has decided to also make vast improvements, including a show court to hold 4,000 people, and several more basketball courts. The Bendigo proposal has been made quite public, and could be investigated by COGS, or the project team, to help in the final decision on what is needed at Shepparton.

SQUASH COURTS PROPOSAL

Shepparton is one of the few country centres that has retained squash courts, competitions and tournaments after the squash boom of about 20 years ago subsided. Shepparton recently staged a high standard tournament, including international and Australian ranked players, and is developing young players who have been competing on the national scene, as well as maintaining regular club competitions. The present squash courts in Archer Street opposite Safeway, are privately owned, and could well be the subject of a change to retail development in the future, but I stress there is no present indication of this. However, modern, new courts, together with viewing areas and dressing room, and shower facilities at the stadium, would give the sport a great boost. They could make Shepparton one of the leading squash centres in country Australia.

BASKETBALL IS GROWING

The Greater Shepparton Basketball Association advises me that it needs more courts, and court time, because it has had to reject some teams wishing to join present competitions.

Basketball has alternatively grown fast in playing numbers and popularity, and dropped in the same way at other times, but the present indications at Shepparton are that it can continue to grow. One of the reasons for this is that the association already has four stadium courts, and can hire courts at schools, and other venues for its successful annual junior tournament, which attracts more than 150 teams each summer. The association also fields mens and womens senior teams in a state-wide Big V competition, and in a north eastern conference. There is an ideal flow of juniors from the local club competition, and representative Shepparton junior teams onto those senior teams.

The association is very capably run by the current officials and committee, and has an outstanding number of highly qualified country coaches, assisting in the development of the sport. Many of those coaches and officials have been dedicated to the association's well-being, for over 20 years. Additional courts, and the show court, would enable attraction of state and national events, and cater for hopefully improved crowds in the future.

BADMINTON & TABLE TENNIS

Both these sports have used the stadium since its opening in 1972. Badminton now uses the multi-purpose courts on two nights a week, and table tennis has competitions in the multi-purpose room on six tables, two nights a week.

Improved stadium facilities would give both these sports an opportunity to expand, and take on a role as a regional centre, but much would depend on having capable and progressive committees to achieve further numbers, and perhaps attract outside players to tournaments.

AVAILABILITY OF LAND

COGS is fortunate to have land immediately adjacent to the stadium, which could be used for further development, and enhanced car parking. Many country centres do not have this advantage beside their stadiums.

Looking some years ahead, an improved stadium, as proposed in the present COGS concept, would give Shepparton a wonderful venue around McEwen Reserve, taking in other sports such as Little Athletics, netball, soccer, hockey, tennis, cycling, BMX and equestrian. The overall value to the city's economy, once all of the current proposals come to fruition, would be immense, and long lasting.

STADIUM ENTRANCE

With the proposal to cater for larger crowds and competition numbers as outlined in the concept, it would be necessary to vastly change the entrance area, providing for ticket sales, and smooth transition of crowds into the venue. I think this is already catered for in the present concept, but the opinions of various stakeholders and their potential needs, would be valuable before the final plans are made.

SPORTING OFFICE FACILITIES

The suggestion that offices and facilities could be provided for the headquarters, and administration of various local sports, needs to be carefully considered. It makes sense to have the offices of basketball, squash, badminton and table tennis at the stadium, as well as Valley Sport, but many other sports either already have their own adequate office space, or do not need special consideration. However, this topic is important, as it could lead to facilities such as development of trainers, and general community fitness expertise being accommodated in the office area.

MANAGEMENT CRITERIA IS VITAL

The Sports Stadium has been managed in various ways over its more than 40 years of existence, and there have been some colourful characters amongst the managers.

The stadium should in future be managed directly under the control of the council, even if an overall stadium committee is appointed. After years of having various

council employees as stadium managers, the former City Of Shepparton decided about 20 years ago, to employ a management company to run the stadium. This was an organisation called RANS, which was run from Geelong, and gained control of Shepparton, and several other stadiums around Victoria. It proved very unpopular with the sports then using the stadium, because of the attitude of some of its staff, and eventually, RANS went into liquidation, after having lost the contract at Shepparton. Another management company was then appointed, and did a reasonable job, but the present City Of Greater Shepparton then wisely took back the management of the facility. It is fair to say some managers have made bad mistakes, and not all have enjoyed popularity with the stadium users, so it is essential that careful consideration be given to the criteria for future stadium management, and that a thorough examination of the qualifications of the manager and staff be undertaken, for the good of the whole project.

COGS is to be commended for its forward thinking, and for being prepared to consider large amounts of fundraising, and outlay of council funds towards this project, as it is also showing with the McEwen Reserve developments, and the proposal for a new arts museum. This is the right attitude, and hopefully the community will get behind COGS, and the various stakeholders, who would benefit from the proposals.

Yours Faithfully,

Bill McCarthy

33 Wright Avenue, Shepparton, 3630

58 217 010