

# **ATTACHMENT TO AGENDA ITEM**

**Ordinary Meeting**

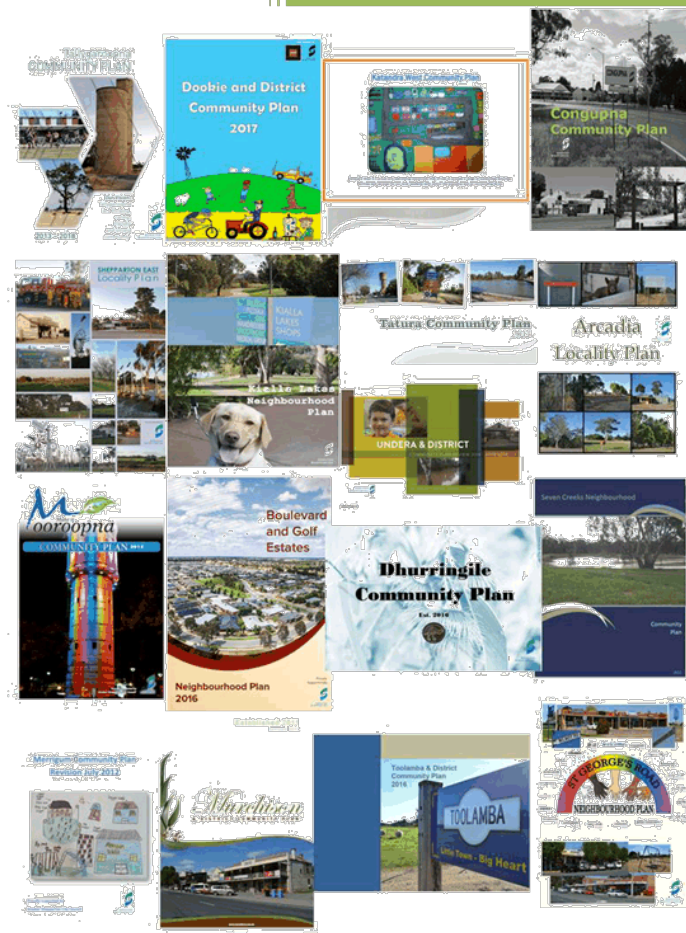
**19 December 2017**

**Agenda Item 8.3      Community Planning Action Plan Summary 2017**

**Attachment 1      Community Plan Action Plan Summary 2017 ..... 117**

2017

# Community Plan Action Plan Summary



## Introduction

Council is committed to working in partnership with local community's to implement the Community Planning program. A Community Plan is a written document that identifies a community's vision for the future and the priorities and actions identified to achieve this vision.

Council is currently working with seventeen small towns, localities and neighbourhoods with Greater Shepparton.

- Arcadia
- Boulevard and Golf Estates
- Congupna
- Dhurringile
- Dookie
- Katandra West
- Kialla Lakes
- Merrigum
- Mooroopna
- Murchison
- Seven Creeks
- Shepparton East
- St George's Road
- Tallygaroopna
- Tatura
- Toolamba
- Undera

Council recognises that it is important that Community Plans are regularly reviewed so that the priorities and actions are relevant and up to date.

As such, Steering Committees review their Action Plans annually. The groups have recently consulted with their local community and other stakeholders. From the information gathered, the Steering Committees have updated their associated Action Plans and have highlighted priorities that they will concentrate on over the next year. This document is a compilation of the Action Plans (and priorities) from each of the seventeen Community Plan groups.

## Community Planning Project Priorities 2017

COMMUNITY	PROJECT PRIORITIES 2017
Arcadia	<ul style="list-style-type: none"> <li>Recreation Reserve Masterplan Implementation (formalise carpark and lighting)</li> <li>Advocate for inclusion within the NBN roll out</li> <li>Heritage mural</li> </ul>
Boulevard & Golf Estate	<ul style="list-style-type: none"> <li>Facilitate community events and activities</li> <li>Determine interest in forming a neighbourhood watch group</li> <li>Address safety concerns</li> <li>Investigate options for further all-age recreational facilities</li> </ul>
Congupna	<ul style="list-style-type: none"> <li>Upgrade and improve safety on our roads</li> <li>Improve drainage to reduce our flood risk</li> <li>Improve the aesthetics of town including beautification around the town entry signage, parking, curbing</li> <li>Investigate opportunities for early childhood facilities</li> <li>Improvements to Recreation Reserve</li> </ul>
Dhurringile	<ul style="list-style-type: none"> <li>Create a welcome pack for new community members and improve promotion of area</li> <li>Improve safety around school – bus shelter, safe crossings, signage</li> <li>Hold community events for all ages</li> <li>Advocate for improvements to roads</li> <li>Upgrades at Recreation Reserve including – improved kitchen facilities, heating, air conditioning</li> </ul>
Dookie	<ul style="list-style-type: none"> <li>Rail Trail – Stage 2</li> <li>Continued development of facilities for youth, including the Dookie Youth SPOT (Stage 2,3,4)</li> <li>Sewerage - Sustainable water management plan that addresses grey, black and storm water</li> <li>Support the expansion of the Dookie War Memorial site to adjacent land, including future redevelopment of cenotaph</li> <li>Support the potential amalgamation of the Dookie Primary School and Dookie Kindergarten</li> </ul>
Katandra West	<ul style="list-style-type: none"> <li>Future of Katandra West Community Hall</li> <li>Advocate for improved mobile reception</li> <li>Assist Men's Shed to secure longer lease for their building</li> <li>Establish a home for the Historical Society</li> </ul>
Kialla Lakes	<ul style="list-style-type: none"> <li>Install lights around Lake Kialla</li> <li>Identify strategies to address speeding in neighbourhood</li> <li>Facilitate events for the community</li> <li>Investigate and seek funding for greater use of the lakes through bird hides, jetty's and canoes</li> <li>Encourage responsible dog ownership through removal of waste, more dog bins and / or off leash dog park</li> </ul>
Merrigum	<ul style="list-style-type: none"> <li>Water play / splash equipment for Merrigum Pool (funding application re-submitted)</li> <li>Attract more families to live in Merrigum</li> <li>Implementation of Recreation Reserve masterplan</li> <li>Community events and activities.</li> </ul>
Mooroopna	<ul style="list-style-type: none"> <li>Ferrari Park masterplan – formalise parking</li> <li>Support the implementation of McLennan Street masterplan</li> <li>Improve access and perception of safety at Mooroopna Railway Station</li> <li>Support walking path from Kidstown to Gemmills Swamp</li> <li>Support the use of Mooroopna Pool</li> <li>Encourage development of shops</li> </ul>
Murchison	<ul style="list-style-type: none"> <li>Support youth recreation spaces – SPOTS</li> <li>Engage with Council and Recreation Reserve to develop a masterplan</li> <li>Extend the Rail Trail to Murchison East</li> <li>Support diversity in business to increase employment and increase retail</li> <li>Creation of iconic entrances</li> </ul>
Seven Creeks	<ul style="list-style-type: none"> <li>Walking Track around Seven Creeks wetlands</li> <li>Recreation space and opportunities</li> <li>Raferty Road</li> </ul>

COMMUNITY	PROJECT PRIORITIES 2017
Shepparton East	<ul style="list-style-type: none"> <li>• Child road safety surrounding primary school</li> <li>• Development of Central Park masterplan to highlight future priorities</li> <li>• Additional trees and landscaping</li> <li>• Walking Track from Shepparton East alongside Midland Highway</li> </ul>
St George's Road	<ul style="list-style-type: none"> <li>• More local events in the area</li> <li>• Celebrate the unique character of our shopping precincts – murals, signage, sculpture etc</li> <li>• Advocacy for public toilets</li> <li>• Improve streetscape – more seating, lighting (funding secured in 17/18)</li> </ul>
Tallygaroopna	<ul style="list-style-type: none"> <li>• Second stage of Tallygaroopna Walking Track</li> <li>• Community noticeboard</li> <li>• School road safety – rumble strips</li> <li>• Advocacy for improved drainage in the town</li> <li>• Local community events and activities</li> </ul>
Tatura	<ul style="list-style-type: none"> <li>• Mactier Park</li> <li>• Tatura Museum</li> <li>• Lake Bartlett masterplan implementation</li> <li>• Cycling and walking tracks</li> <li>• Advocate for public transport</li> <li>• Library extension</li> </ul>
Toolamba	<ul style="list-style-type: none"> <li>• Projects at the Recreation Reserve</li> <li>• Construction of a playground at Colaura Gardens</li> <li>• Walking path between Toolamba and Old Toolamba</li> <li>• Improved school safety – reducing speed limit, school crossing and connecting paths</li> <li>• Improvement of kerb, channel, guttering</li> </ul>
Undera	<ul style="list-style-type: none"> <li>• Community activities</li> <li>• Development and maintenance of the natural environment</li> <li>• Planning for potential walking paths</li> <li>• Youth Recreation Spaces - SPOTS</li> </ul>

## Arcadia Community Plan Action Plan 2017

Goal	Actions	Partnerships	Priority	Status	Strategic Goals
Improvements to the Community Hub / Recreation Reserve including <ul style="list-style-type: none"> <li>- Formalise parking as per masterplan</li> <li>- Footpath from car park to public toilet</li> <li>- Complete concreting or cover exposed area around toilet and build retaining wall to stop water inundation in toilet area</li> <li>- Shade structure over playground</li> <li>- Inclusion of further recreation facilities (basketball or netball ring at tennis court)</li> </ul>	<ul style="list-style-type: none"> <li>- Create concept design for shade structure</li> <li>- Seek funding opportunities for each project through for example, Council Capital and/or operational budget, shade grants or other grant opportunities</li> </ul>	Arcadia Locality Plan Group GSCC	High 2016/2017	-Masterplan Completed -Funding being investigated	Built
Advocate for Arcadia to be included within the NBN roll out	<ul style="list-style-type: none"> <li>- Identify a range of advocacy measures</li> </ul>	Arcadia Locality Plan Group	High 2016/2017	Initial feedback has been requested	Advocacy
Share and promote our historical past	<ul style="list-style-type: none"> <li>- Investigate signage detailing items of historical significance i.e. railway, butter factory</li> </ul>	Arcadia Locality Plan Group Historical Society	High 2016/2017	Design for heritage mural underway	Social
Develop additional community events such as AFL Legend Open Day, festivals and National Tree Day	<ul style="list-style-type: none"> <li>- Meet with Council's events departments to seek assistance in planning community events</li> <li>- Consider development of subcommittee to plan local events</li> </ul>	Arcadia Locality Plan Group GSCC	Medium	In progress: CFA Sunday markets Social Tennis Proposed Cherry Festival Held Nation Tree Day event in 2016 Held Neighbour Day BBQ in 2016	Social
Investigate establishment of a playgroup	<ul style="list-style-type: none"> <li>- Gauge community interest</li> <li>- Apply for playgroup to be registered with Playgroup Victoria</li> </ul>	Arcadia Locality Plan Group Playgroup Victoria GSCC	Low	Not commenced	Social
Identify strategies to address rubbish concerns at the river including from visiting campers	<ul style="list-style-type: none"> <li>- Identify possible measures such as signage installation or maintenance of rubbish bins</li> </ul>	Arcadia Locality Plan Group Parks Victoria GSCC	High	-Rubbish bin installed on Council land near river -Met with Parks representative to develop signage at river to direct to bin, awaiting funding	Natural
Explore opportunities to utilise and appreciate the river	<ul style="list-style-type: none"> <li>- Develop a plan for how residents would like to utilise and appreciate</li> </ul>	Arcadia Locality Plan Group Parks Victoria	Medium		Natural

	the river	RiverConnect			
Construct walking tracks along the river including additional seating	<ul style="list-style-type: none"> <li>- Identify enhancements required</li> <li>- Considers maps and signage outlining the tracks including items of interest i.e. bird species in area</li> </ul>	Arcadia Locality Plan Group Parks Victoria	Low	-Meeting held with Parks Representative	Natural
Identify opportunities to sell local produce at farmers markets	<ul style="list-style-type: none"> <li>- Contact Australian Farmers Market Association for more information</li> <li>- Consider seasonal market</li> </ul>	Arcadia Locality Plan Group	Low	In progress: -Local Arcadia Market established -Continuing conversations regarding other opportunities	Economic
Advocate for small businesses to establish in Arcadia such as agri-tourism and horse riding opportunities	<ul style="list-style-type: none"> <li>- Work with Council's Investment Attraction and / or Arts, Events and Tourism departments to identify any possible businesses establishing in Arcadia</li> </ul>	Arcadia Locality Plan Group	Low	In progress: -Advocate for NBN connection to encourage business development	Economic
Advocate for maintenance of drains (in area in front of tennis court).	<ul style="list-style-type: none"> <li>- Meet with Council's Projects Department regarding maintenance schedules</li> </ul>	Arcadia Locality Plan Group	Medium	Completed: Will require maintenance	Built
Investigate opportunities for further recreational facilities such as bike and walking tracks, BMX, Skate parks and flying fox.	<ul style="list-style-type: none"> <li>- Consider develop of a working group to explore community preferences</li> </ul>	Arcadia Locality Plan Group	Low	Not commenced	Built
Advocate for safe railway crossing for the south entry of town	<ul style="list-style-type: none"> <li>- Initiate discussions with VicTrack</li> <li>- Identify a range of advocacy measures</li> </ul>	Arcadia Locality Plan Group VicTrack & V/Line GSCC	High	Not commenced	Advocacy
Advocate for Arcadia to be included within the NBN roll out	<ul style="list-style-type: none"> <li>- Identify a range of advocacy measures</li> </ul>	Arcadia Locality Plan Group	High	Initial feedback has been requested	Advocacy
Advocate for public transport to Shepparton, Seymour, Melbourne	<ul style="list-style-type: none"> <li>- Identify appropriate advocacy measures</li> </ul>	Arcadia Locality Plan Group	Medium	Not commenced	Advocacy

## Boulevard &amp; Golf Estates Community Plan Action Plan 2017

Goal	Actions	Partnerships	Timeframes	Status	Strategic Goals
Facilitate community events and activities (e.g. outdoor cinema, Christmas party, petting zoo, garage sale)	-Investigate which community events would attract a large attendance rate -Secure funding on an event-by-event basis	-Boulevard & Golf Estates Community Committee		-2016 Christmas BBQ completed -2016 Outdoor movie night completed	Social
Determine community interest of forming a Neighbourhood Watch group	-Establish a working group with interested residents -Liaise with Victoria Police to assess requirements for becoming an official watch group	-Boulevard & Golf Estates Community Committee -Victoria Police		-Information meeting held May 2017 for interested residents	Social
Seek funding for a Community BBQ for the Neighbourhood	-Establish desired location of BBQ -Secure funding for installation	-Boulevard & Golf Estates Community Committee -GSCC		Not commenced	Social
Additional play equipment in the north end open space	-Community to work with developer to have input into the choice of play equipment	-Boulevard & Golf Estates Community Committee -Developer		-Playground has been installed. Council now maintains playground; park maintained by developer	Social
Investigate options for further all-age recreational facilities such as: - half-court basketball and/or netball ring for community use - outdoor exercise equipment (all ages and abilities) - seeking opportunities to install a pump track - installation of a community trampoline - investigating a mini-golf course or event	- Undertake further community consultation on recreation needs of the community -Facilitate events that allow people to try different recreational options -Acquire relevant permissions for installation of play -Form relevant partnerships (i.e. Shepparton Golf Club) -Secure any required funding	-Boulevard & Golf Estates Community Committee -GSCC		Not commenced	Social/Built
Advocate for following roads to be sealed - Kittles Road - Wheller Road	-Advocate for capital budget bid/grants	-Boulevard & Golf Estates Community Committee -GSCC		Not commenced	Built
Advocate for defined on road cycleways: Wheller road, Rudd Road, Golf Drive and Wanganui Road	-Liaise with Council's Traffic department to investigate potential of modifying roads	-Boulevard & Golf Estates Community Committee -GSCC -Vic Roads		Not commenced	Built



Advocate for additional recreational path/s: - entrance and path/s through floodplain and river - behind cemetery - connection to KidsTown and Mooroopna - Bush trail - Connect to town, along Boulevard Drive	-Establish desire route/s for path/s -Advocate to Council and Parks Victoria to implement paths -Secure any grants	-Boulevard & Golf Estates Community Committee -Parks Victoria -GSCC - RiverConnect		Not commenced	Built
Advocate for footpaths: -Rudd Road -Golf Drive -Wheller Road	-Advocate for footpaths to be included in Council's Missing Links Program	-Boulevard & Golf Estates Community Committee -GSCC		-Rudd Road in Cycling Strategy for a shared path (to Golf Drive). It has been surveyed; potential design to happen 17/18	Built
Encourage increased tree plantings (colourful, evergreen, more variety + native), including signage, plantings and interactive elements at Tassickers Reserve	-Liaise with Council's Environment and Sustainability department to acquire any available plants and permissions -Secure any required funding	-Boulevard & Golf Estates Community Committee -GSCC - Shepparton- Mooroopna Urban Landcare		Not commenced	Natural
Installation of a drinking fountain	-Establish preferred location for drinking fountain(s) -Secure funding for installation	-Boulevard & Golf Estates Community Committee -GSCC -GV Water		Not commenced	Built
Advocate for existing level of maintenance of parks and estate to continue (including park in Kensington Drive and north end open space + general awareness raising about picking up dog waste)	-Inform Council of maintenance issues as they arise -Utilise Facebook group to remind residents about dog waste removal	-Boulevard & Golf Estates Community Committee -GSCC		Not commenced	Natural
Installation of more bins – including recycling and dog waste (Tassickers, Canterbury, north end open space)	-Work with Council to establish desired locations of bins and advocate for installation	-Boulevard & Golf Estates Community Committee -GSCC			Built
Installation of a shelter in north end open space	-Work with developer to guide installation of shelter	-Boulevard & Golf Estates Community Committee -GSCC		-Developer has confirmed that they are installing shelter in the near future	Built
Advocate for upgrades at Golf Drive (widen, kerb and road)	-Advocate for capital budget bid/grants	-Boulevard & Golf Estates Community Committee -GSCC		Not commenced	Built
Advocate for upgrades at Wanganui Road/Rudd Road corner (improve signage, solar light on corner, trees and vision)	-Liaise with Council's Traffic department to investigate options for each action	-Boulevard & Golf Estates Community Committee -GSCC		Not commenced	Built
Investigate the opportunity to construct a boardwalk at Reedy Swamp to showcase natural environment	-Advocate to Parks Victoria for boardwalk	-Boulevard & Golf Estates Community Committee -Parks Victoria - RiverConnect		Not commenced	Built Natural

Address safety concerns (i.e. rubbish dumping and burglary) in the neighbourhood	-Investigate the possible implementation of security cameras -Advocate for police patrols at night -Liaise with Council's Waste Department to implement a potential waste awareness program -Community to notify Local Laws of any rubbish dumping activity	-Boulevard & Golf Estates Community Committee -GSCC - Victoria Police		Not commenced	Advocacy
Support the Mooroopna Bypass	-Offer support when needed/required	-Boulevard & Golf Estates Community Committee -Victoria Government		Not commenced	Advocacy
Attract a General Store/corner store/coffee shop/more involvement with golf club	-Advocate for the opening of a corner store business -Continue to build partnerships with the Golf Club	-Boulevard & Golf Estates Community Committee -Businesses -Shepparton Golf Club		Not commenced	Economic
Investigate support for the formation of a community garden	-Establish working group to drive the project -Establish preferred location and seek relevant permissions -Secure any necessary funding	-Boulevard & Golf Estates Community Committee -GSCC		Not commenced	Social
Explore additional seating options (north end, bench seat in Canterbury avenue playground, Kingfisher)	-Investigate if Council has any spare seats that can be installed -Secure any relevant funding	-Boulevard & Golf Estates Community Committee -GSCC		Not commenced	Built
Advocate for more parks, including park space near river and near Sandhill/Sandbank Court	-Advocate with Council and Parks Victoria to create more native open spaces	-Boulevard & Golf Estates Community Committee -GSCC -Parks Victoria - RiverConnect		Not commenced	Natural
Encourage/enforce dogs on leash	-Use Facebook group to promote responsible dog ownership -Contact Council's Local Laws Team and notify them of any person breaching on leash requirement	-Boulevard & Golf Estates Community Committee -GSCC		Not commenced	Social
Investigate possibilities for general speed control/dampening/reduction e.g. speed humps - Including Rudd Road speed limit being reduced to 50km	-Liaise with Council's Traffic department to investigate traffic calming options	-Boulevard & Golf Estates Community Committee -GSCC		Vic Roads is reducing the Rudd Road speed.	Built
Wayfinding signage on paths	-Determine features to be included on signage -Secure funding to implement way finding signage	-Boulevard & Golf Estates Community Committee -GSCC		Not commenced	Built

Advocate for improved bus coverage within the estates	-Advocate to Shepparton Transit for increased services and infrastructure	-Boulevard & Golf Estates Community Committee -Shepparton Transit		Not commenced	Advocacy
Advocate for a local Post Box	-Advocate to Australia Post for local Post Box	- Boulevard & Golf Estates Community Committee -Australia Post		Not commenced	Advocacy
Undertake measures to address Fire Safety in the neighbourhood. (Including safe exits/fire management plan, maintenance of grass north of Wheller Road, cold burns to reduce fuel load etc.)	-Liaise with Council's Emergency Management Coordinator to identify potential safety strategies and actions -Develop individual fire safety plans using CFA guidance	-Boulevard & Golf Estates Community Committee -GSCC -CFA		Not commenced	Advocacy

## Congupna Community Plan Action Plan 2017

Goal	Actions	Partnerships	Timeframes / Priority	Status	Strategic Goals
1. Upgrade and improve safety on our roads	Construct turning lanes at: <ul style="list-style-type: none"> <li>• Congupna East Road into Hall</li> <li>• Rec Reserve</li> <li>• Old Grahamvale Road</li> <li>• Congupna Primary School Service Road improvements</li> </ul> Create concept plan in partnership with GSCC and VicRoads	CCPSC GSCC VicRoads	High 2017/18	-Turning lanes discussion begun internally with Traffic Engineer	Built
2. Improve drainage to reduce our flood risk	To advocate for drainage, both new initiatives and maintenance Liaise with Council's Projects and Works teams regarding updates to drainages works.  Maintain and clear current drains	CCPSC GSCC	High 2017/18	Council Staff met with the Committee to outline the plans to address drainage. Stage One bid unsuccessful 2015/2016 -Short term drainage improvements in front of/near Incitec completed in partnership with VicRoads - Land acquisition process for stage 1 commencing 2016	Built
3. Improve the aesthetics of town including beautification around the town entry signage, parking, curbing	Develop scope / proposal for what they would like to see in this area.	CCPSC Vic Roads GSCC	High 2017/18	Talk with Parks and Gardens about the prospect of planning around the town entry sign.	Built
4. Investigate opportunities for early childhood facilities	Work with Council's Children and Youth department to identify possibilities to increase or raise awareness of accessible early childhood facilities ie Kindergarten.	CCPSC GSCC	High	Not commenced	Social
5. Improvements to Recreation Reserve	Netball court resurfacing and improved drainage Construct Shade Structure over playground Seek grant funding for hall updates Small signs around recreation reserve walking track featuring history of Congupna, families that settled in the area and indigenous history	Recreation Reserve Committee of Management Congupna Football Netball Club CPPSC GSCC	High 2017/18	-emergency grant to replace stolen equipment awarded - safety grant secured in 2017 for upgrading security of hall	Built Social

Goal	Actions	Partnerships	Timeframes / Priority	Status	Strategic Goals
Construct walking / cycling tracks linking Congupna to Shepparton	-Identify potential route for walking tracks. -Initiate discussions with Council including Strategic Planning department to seek support for walking tracks -Network with other small towns interested development of walking / cycling tracks. -Consider development of Friends of the Walking trail to assist with basic maintenance of the track. -Advocate for inclusion in Walking Path Strategy (under development)	CCPSC GSCC VicRoads	Medium	Included in Cycling Strategy  Investigating options and funding opportunities	Social
To increase safe access to the Primary School.	Initiate discussions with DEECD regarding a potential partnership project. Advocate for parking to be addressed and a safe turning lane to enter and exit the school Install One Way and No Exit signs at either end of side road Install bollards to stop cars crossing through drain and back onto road (u-turns through drain)	CCPSC Congupna Primary School Department of Education and Early Childhood (DEECD) VicRoads	Medium	Bid for works unsuccessful in 2015/2016 Investigating short-term options to improve including "No Parking" road markings.	Advocacy
Improve parking outside the Congupna General Store on the east and west side of the road.	Meet GSCC staff to discuss possibility to address parking in this area.	CCPSC GSCC Vic Roads Congupna General Store	Medium	Some grading has occurred. Continuing to advocate for the area to be sealed to reduce the water and mud gathering in the winter	Built
Install more art murals within the town	Identify potential site and subsequent approvals from the land owners for the mural Identify possible artist to undertake the work Seek advice from SAM if required Apply for funds.	CCPSC GSCC SAM (Shepparton Art Museum)	Low	One designed and completed near General Store	Social
Upgrade Farrell Park	Identify preferred scope of works including murals, shade structure and landscaping Engage with community to determine priorities Make plan including priorities Work with Council's Recreation and Parks regarding upgrade options Explore and secure funding opportunities	CCPSC GSCC	Low	Not commenced	Built Environment
Develop district map for visitors and locals	Identify information to be included within the	CCPSC	Low	Not commenced	Social

Goal	Actions	Partnerships	Timeframes / Priority	Status	Strategic Goals
	map and potential site.	GSCC			
Expand the Pony Paddock to develop into a meeting place enhancing the natural vegetation (BBQ, seating area)	Seek support from required partners (including land owner). Develop a proposal of how they would like to develop the area which will assist in the seeking of funding	Congupna – Tallygaroopna Landcare DEECD CPPSC	Low	Not commenced	Environment
Clean up area along railway near Wallace Street and beautification	Identify scope of beautification of the area. Liaise with land owner about proposed clean up and works.	CCPSC VicTrack	Low	Not commenced	Environment
Advocate for increased safety, particularly in regards to speeding vehicles entering Congupna from the north (from Katamatite)	Advocate with Highway Patrol from Victoria Police and Vic Roads regarding enforcement of the current speed limit Advocate with Vic Roads regarding permanent reduction of speed limit	CCPSC Vic Roads Victoria Police	Low	Speed limit has been decreased. Investigate education program.	Advocacy
Increase small business opportunities	Work in partnership with Council's Investment Attraction branch to identify any potential businesses willing to relocate or start up in Congupna	CCPSC GSCC	Low	Not commenced	Economic
Develop additional community events for people of all ages.	Meet with Council Events department to seek assistance in additional events coming to Congupna Consider development a subcommittee to plan local events such as movie nights or seniors nights.	CCPSC GSCC Congupna Football Netball Club	Low	Not commenced	Social
CFA Shed to be located in Congupna	Identify a mechanism to advocate for this facility	CCPSC CFA GSCC	Low	Not commenced	Advocacy
Seek funding for infrastructure (i.e. a drop down film screen) for movie nights.	Liaise with wider community regarding support for this goal. Seek funding for this project, possibly through Council's Community Matching Grants.	CCPSC Recreation Reserve Committee of Management Recreation Reserve users Funding bodies. Young people	Low	Not commenced	Social
Mobile library to visit Congupna	Gauge community interest through petition or	CCPSC	Low	Not commenced	Social

Goal	Actions	Partnerships	Timeframes / Priority	Status	Strategic Goals
	list of interested parties  Apply to the Goulburn Valley Regional Library to take Congupna into consideration as they review the current timetable pending interest	Goulburn Valley Regional Library Corporation			
BMX jumps / track or Skate park in Congupna	Consider development of a working group to explore preference for BMX track and skate park. Work with young people to identify appropriate site.	CCPSC GSCC Young people	Not relevant as of 2016 Potential to revisit in future.	Discussions held with young people in the community and representatives from Open Space. Determined not a significant enough population of young people in town to warrant the investment in BMX facilities and insurance etc requirements.	Built Social

## Dhurringile Community Plan Action Plan 2017

Goal	Actions/Projects	Partnerships	Timeframes/Priority	Status	Strategic Goal (i.e. Council Pillar)
Promote our local area	<ul style="list-style-type: none"> <li>- Create a welcome pack for new community members</li> <li>-Improve promotion and advertising the positive elements of the area including employment/land/community to encourage people to move to the area</li> </ul>	<ul style="list-style-type: none"> <li>-Dhurringile Community Plan Committee (DCPC)</li> <li>-Dhurringile P.S</li> <li>-Greater Shepparton City Council (GSCC)</li> </ul>	High		Social Economic
Continue to support and develop our local Primary School to build enrolment	<ul style="list-style-type: none"> <li>-Improve safety around school including speed control, safe crossings, signage, safe walking paths beside roads</li> <li>-Investigate location preference and construct a bus shelter</li> </ul>	<ul style="list-style-type: none"> <li>-DCPC</li> <li>-Dhurringile P.S</li> <li>-Dept. Education</li> <li>-GSCC</li> </ul>	High		Built
Improve condition and accessibility of Recreation Reserve	<ul style="list-style-type: none"> <li>-Install drinking fountain</li> <li>-New signage</li> <li>-Construct historical/memorial signage around reserve to link with Centenary Celebration of school</li> <li>-Improve landscaping, fencing, and parking</li> <li>- Additional car park lighting</li> </ul>	<ul style="list-style-type: none"> <li>-DCPC</li> <li>-Dhurringile Section 86 Committee</li> <li>-GSCC</li> <li>-Dhurringile Prison</li> <li>-Dhurringile and District Landcare</li> </ul>	Medium	-Discussion begun about a semi-formal Masterplan for reserve to link all projects	Built Natural
Strengthen our community connections	<ul style="list-style-type: none"> <li>-Hold more community events for all ages, abilities and interests, including movie nights</li> <li>-Continue to develop opportunities for all organisations/businesses/groups to effectively communicate and collaborate meaningfully on projects</li> <li>-Improve facilities and activities for young people</li> <li>-Establish a playgroup in the area</li> <li>-Create community cookbook</li> </ul>	<ul style="list-style-type: none"> <li>-DCPC</li> <li>-Dhurringile Primary School</li> <li>-Dhurringile Section 86 Committee</li> <li>-Prison</li> <li>-Local businesses</li> <li>-GSCC</li> </ul>	High		Social
Celebrate our history	<ul style="list-style-type: none"> <li>-Create historical walk/path connecting key locations</li> <li>-Hold celebratory/memorial events</li> <li>- historical signage for key locations</li> </ul>	<ul style="list-style-type: none"> <li>-DCPC</li> <li>-Dhurringile Section 86 Committee</li> <li>-Dhurringile P.S</li> </ul>	Medium		Social



		-Dhurringile Prison			
Strengthen our connection and accessibility to our nearby towns and region	<ul style="list-style-type: none"> <li>-Advocate for development of shared path connections to Murchison and Tatura</li> <li>-Advocate for VLine bus stop to improve local transport</li> <li>-Advocate for improvements to quality of roads, including surfaces and widening</li> <li>-Improve horse warning signage to improve safety</li> <li>-Monitor impacts of proposed by-pass and fast rail proposals and capitalise on opportunities</li> </ul>	<ul style="list-style-type: none"> <li>-DCPC</li> <li>-GSCC</li> <li>-VLine</li> </ul>	High	Not commenced	Built
Improve condition and accessibility of Community Centre	<ul style="list-style-type: none"> <li>-Upgrade toilets including disabled toilet</li> <li>-Provide baby change facilities</li> <li>-Improve kitchen facilities</li> <li>- Heating</li> <li>-Air conditioning</li> </ul>	<ul style="list-style-type: none"> <li>-DCPC</li> <li>-Dhurringile Section 86 Committee</li> <li>-GSCC</li> </ul>	High	Not commenced	Built

## Dookie Community Plan Action Plan 2017

Goal	Actions	Partnerships	Timeframe	Status	Strategic Goals
Rail Trail	<ul style="list-style-type: none"> <li>Continue to seek funding options for Stage 2 of the Rail Trail (to Cosgrove)</li> <li>Continue to advocate to Moira Shire for Rail Trail from their municipality</li> <li>Investigate installation of tie-up rails and a water trough for horses (near the exercise station)</li> </ul>	<ul style="list-style-type: none"> <li>DDDF</li> <li>Friends of the Rail Trail</li> <li>Community</li> <li>Funding bodies</li> <li>GSCC</li> </ul>	2017/18	<ul style="list-style-type: none"> <li>-Further development of Rail Trail to Cosgrove to be broken into 3 stages. Budget bids to be submitted and funding opportunities sourced.</li> <li>-Advocacy for Rail Trail to continue north into Moira Shire.</li> <li>-Aligns with Council's Cycling and Tourism strategies.</li> </ul>	Built
Continued development of facilities for youth, including the Dookie Youth SPOT (Stage 2,3,4)	<ul style="list-style-type: none"> <li>Development of the Youth SPOT and improved park facilities. Landscaping of SPOT could include botanical garden.</li> <li>Inclusion of free public WiFi (available to both SPOT and CWA Gardens patrons).</li> </ul>	<ul style="list-style-type: none"> <li>DDDF</li> <li>Community</li> <li>SPOT committee</li> <li>Ramp it Up Committee</li> <li>GSCC</li> <li>Recreation Reserve Committee</li> </ul>	2017/18	<ul style="list-style-type: none"> <li>-Construction of Youth SPOT Stage 1 completed. Stage 2 being scoped</li> <li>-Back fence constructed at CWA Gardens 2016</li> </ul>	Built
Sewerage - Sustainable water management plan that addresses grey, black and storm water	<ul style="list-style-type: none"> <li>Continue to advocate to GV Water and Council</li> </ul>	<ul style="list-style-type: none"> <li>DDDF</li> <li>GSCC</li> <li>Goulburn Valley Water</li> <li>Community</li> </ul>	2018/19	-Waste water study underway (2017)	Advocacy
Support the expansion of the Dookie War Memorial site to adjacent land, including future redevelopment of cenotaph	<ul style="list-style-type: none"> <li>Continue to provide support to RSL where appropriate</li> </ul>	<ul style="list-style-type: none"> <li>RSL</li> <li>DDDF</li> <li>Scouts Victoria</li> <li>GSCC</li> </ul>	2018/19	Business case being submitted to Scouts Victoria and GSCC	Advocacy
Support the potential amalgamation of the Dookie Primary School and Dookie Kindergarten	<ul style="list-style-type: none"> <li>Provide support where necessary</li> </ul>	<ul style="list-style-type: none"> <li>DDDF</li> <li>Kindergarten</li> <li>Dookie Primary School</li> </ul>	2017/18	Ongoing discussion	Advocacy

Overnight parking for RV vehicles	<ul style="list-style-type: none"> <li>Investigate requirements for overnight stays and preferred location</li> <li>Source any required funding and permissions</li> </ul>	<ul style="list-style-type: none"> <li>DDDF</li> <li>Community</li> <li>GSCC</li> <li>Marketing bodies</li> </ul>		<ul style="list-style-type: none"> <li>-Investigating requirements for an overnight stay area. Businesses and residents consulted by DDDF in 2016. Revisit as less than 1/3 of township returned survey.</li> <li>-Investigation of feasibility for overnight RV parking in small towns included in tourism strategic plan.</li> </ul>	Social
Increased activity at the Dookie College Campus incorporating the local community	<ul style="list-style-type: none"> <li>Approach university to investigate possible activities or events</li> <li>Advocate for public use of the swimming pool at the campus.</li> </ul>	<ul style="list-style-type: none"> <li>DDDF</li> <li>Community</li> <li>University of Melbourne</li> <li>Saddleback News</li> </ul>		Not commenced	Social
Recognition and celebration of the positive community attributes of Dookie and District	<ul style="list-style-type: none"> <li>Investigate potential activities or events that could achieve this goal</li> <li>Seek funding as required</li> </ul>	<ul style="list-style-type: none"> <li>DDDF</li> <li>Community</li> <li>GSCC</li> <li>Dookie Lifestyle</li> <li>Major Saddleback News / Website</li> </ul>		Not commenced	Social
Encourage contributions to the Major Saddleback News, Lifestyle Dookie calendar & social media platforms	<ul style="list-style-type: none"> <li>Call for submissions for material for publications</li> </ul>	<ul style="list-style-type: none"> <li>DDDF</li> <li>Community</li> <li>Lifestyle Dookie</li> <li>Major Saddleback News</li> <li>Funding bodies</li> </ul>		<ul style="list-style-type: none"> <li>-Dookie Lifestyle working on updating the website – information will feed into the Major Saddleback News</li> <li>-Upgraded in 2015</li> </ul>	Social
Investigate options for using the Maternal Child Health building for other activities (e.g. community hub, arts hub, tourist info)	<ul style="list-style-type: none"> <li>Further consultation required to assess potential usage options</li> <li>Work with MCH coordinator in Council to implement</li> </ul>	<ul style="list-style-type: none"> <li>DDDF</li> <li>Community</li> <li>GSCC</li> </ul>		-Ideas collated during plan review survey. To be reviewed.	Social
Painting or art projection on old silo	<ul style="list-style-type: none"> <li>Investigate preferred options for artwork</li> </ul>	<ul style="list-style-type: none"> <li>DDDF</li> <li>Community</li> <li>GSCC</li> </ul>		-Silo to be included in the Heritage Overlay (Stage 3)	Social
Tourist drive signage (via Dookie College, Tallis, Dookie, Cosgrove, Lemnos, Shepparton)	<ul style="list-style-type: none"> <li>Work with GSCC and Vic Roads to scope project feasibility</li> <li>Secure permissions</li> <li>Secure funding</li> </ul>	<ul style="list-style-type: none"> <li>DDDF</li> <li>GSCC</li> <li>Vic Roads</li> </ul>		Not commenced	Social

Maintain the range of community and sporting opportunities in Dookie, including supporting the local club's strategies	<ul style="list-style-type: none"> <li>Attend sporting and recreational club AGMs to investigate ways in which to support</li> <li>Share potential grant opportunities to clubs</li> </ul>	<ul style="list-style-type: none"> <li>DDDF</li> <li>Community Groups</li> <li>Sporting Org's</li> </ul>		Not commenced	Social
Upgrade/Redevelopment of the Recreation Reserve land to improve drainage issues	<ul style="list-style-type: none"> <li>Recreation Reserve committee to investigate funding to undertake these works</li> </ul>	<ul style="list-style-type: none"> <li>DDDF</li> <li>Recreation Reserve Committee</li> <li>Community</li> </ul>		<ul style="list-style-type: none"> <li>Turf and extra curbing implemented.</li> <li>Extra seating installed</li> <li>Concept planning occurring for retardation basin.</li> </ul>	Built
Continue to investigate walking/riding track options	<ul style="list-style-type: none"> <li>Identify a network of tracks which are environmentally friendly and incorporate development of wildlife corridors with a focus to include interpretive signage and routes of historical significance ("historical trail")</li> </ul>	<ul style="list-style-type: none"> <li>DDDF</li> <li>Community</li> <li>Dookie and District Historical Society</li> <li>GSCC</li> <li>Funding Bodies</li> </ul>		<ul style="list-style-type: none"> <li>Dookie to Mt Major is funded for the 2017/18 year.</li> <li>Rock Correa walk completed.</li> </ul>	Built
Investigate the feasibility of a multipurpose facility next to the rail line which will house the historical society, a covered information area and a platform (to receive tourist/commuter trains)	<ul style="list-style-type: none"> <li>Seek funding for scoping/feasibility study</li> <li>Investigate options for this project with community, Council and DDHS.</li> <li>Vic Track and relevant State authorities will have to be consulted.</li> </ul>	<ul style="list-style-type: none"> <li>Dookie and District Historical Society</li> <li>Funding bodies</li> <li>GSCC</li> <li>DDDF</li> <li>Vic Track</li> </ul>		Not commenced	Built
Investigate street lighting in dark areas of Dookie Township and surrounds and work with Council to implement solutions	<ul style="list-style-type: none"> <li>Community to stipulate areas of concern to Council</li> <li>Funding to be sought for lighting improvements</li> </ul>	<ul style="list-style-type: none"> <li>Community</li> <li>GSCC</li> <li>DDDF</li> <li>Powercor</li> </ul>		-Areas of concern reported to Council August 2017	Built
Identify the development constraints for the Dookie Township and support future re-joining proposals to increase the supply of residential zone land.	<ul style="list-style-type: none"> <li>Residents to work alongside Council to identify concerns and seek possible solutions</li> </ul>	<ul style="list-style-type: none"> <li>Community</li> <li>GSCC</li> <li>DDDF</li> </ul>		-Dookie Township recommended for further low density housing. Further studies need to be undertaken.	Built
Widening and maintenance of Saddleback Road	<ul style="list-style-type: none"> <li>Committee to advocate for required works</li> <li>Identify environmental significance of roadside vegetation and implement protection measures.</li> <li></li> </ul>	<ul style="list-style-type: none"> <li>DDDF</li> <li>Community</li> <li>GSCC</li> </ul>		Not commenced	Built

Promote awareness of the unique aspects of Dookie through interpretive signage (i.e. Indigenous history, historical points of interest, and flora/fauna)	<ul style="list-style-type: none"> <li>Investigate options for promotion of flora and fauna</li> <li>Seek funding as required</li> </ul>	<ul style="list-style-type: none"> <li>DDDF</li> <li>Community</li> <li>GSCC</li> <li>Vic Roads</li> <li>DDH Society</li> <li>Community</li> </ul>		Not commenced	Built
Update and implement the Dookie Streetscape plan, including new town entrance signage	<ul style="list-style-type: none"> <li>Committee to update Streetscape Plan</li> <li>Seek funding for implementation as required</li> </ul>	<ul style="list-style-type: none"> <li>DDDF</li> <li>Community</li> <li>GSCC</li> <li>Town Beautification Committee</li> </ul>		-Updating of the CMM Fisher Stewart 1998 Streetscape plan in progress (M14/46736)	Natural
Continue to advocate for ongoing road maintenance and roadside vegetation maintenance	<ul style="list-style-type: none"> <li>GSCC to provide advice on maintenance schedules of area.</li> <li>Residents can report areas of concern to GSCC front desk.</li> </ul>	<ul style="list-style-type: none"> <li>DDDF</li> <li>Vic Roads</li> <li>Community</li> <li>GSCC</li> <li>Major Saddleback</li> </ul>		Ongoing	Natural
Support and maintain vibrant local businesses, and assist with the start-up of new businesses	<ul style="list-style-type: none"> <li>An audit and directory of local businesses</li> </ul>	<ul style="list-style-type: none"> <li>DDDF</li> <li>Community/Bus</li> <li>Dookie Lifestyle</li> <li>GSCC</li> <li>Funding bodies</li> </ul>		-GSCC currently developing business database in Dookie -Business event to be held in Dookie Q1 2018	Economic
Tourist information section in local businesses	<ul style="list-style-type: none"> <li>Approach businesses to develop implementation options</li> <li>Collate tourist information material relevant to Dookie</li> </ul>	<ul style="list-style-type: none"> <li>DDDF</li> <li>Private businesses</li> </ul>		Not commenced	Economic
Promote and provide facilities and events that attract visitors to the area including supporting the Dookie Arts projects and welcoming new residents (i.e. Dookie Food Festival, town ball, youth music festival)	<ul style="list-style-type: none"> <li>Continue developing and facilitating events for residents in the area</li> <li>Continue to support cycling events.</li> </ul>	<ul style="list-style-type: none"> <li>DDDF</li> <li>Community</li> <li>Arts Committee</li> <li>GSCC</li> <li>Funding bodies</li> </ul>		-Dookie film group operating since 2015 with 10 films per year (monthly). 70 members. -Council will continue to work with the Dookie community to implement events and make them aware of events grants.	Social/Economic
Ongoing commitment to grain handling operations in Dookie	<ul style="list-style-type: none"> <li>Continue to advocate</li> </ul>	<ul style="list-style-type: none"> <li>DDDF</li> <li>Community</li> <li>Vic Track</li> <li>GSCC</li> <li>Vic Grain</li> </ul>		Not commenced	Advocacy

Investigate solar and wind energy options for Dookie	<ul style="list-style-type: none"> <li>• Continue to advocate</li> <li>• Investigate site</li> <li>• Determine community interest in public energy options.</li> </ul>	<ul style="list-style-type: none"> <li>• DDDF</li> <li>• Community</li> </ul>		-University of Melbourne has conducted a wind feasibility study within Dookie. Result: not feasible.	Advocacy
Advocate for increased public transport options	<ul style="list-style-type: none"> <li>• Continue to advocate</li> </ul>	<ul style="list-style-type: none"> <li>• DDDF</li> <li>• Community</li> </ul>		-Access Spot to be installed in Dookie 2017	Advocacy
Development of a plan and implementation strategy for aged persons housing in Dookie	<ul style="list-style-type: none"> <li>• Continue to advocate and liaise with Church of England for potential land</li> <li>• Land Capability Assessment to be done on site</li> </ul>	<ul style="list-style-type: none"> <li>• DDDF</li> <li>• Community</li> <li>• GSCC</li> <li>• Aged organisations</li> <li>• Funding bodies</li> <li>• Church of England</li> </ul>		-Ongoing meetings with church	Advocacy

## Katandra West Community Plan Action Plan 2017

Goal	Actions	Partnerships	Timeframes	Status	Strategic Goals (i.e Council pillar)
Explore options for renovations and the use of the <b>Katandra West Community Hall</b>	<ul style="list-style-type: none"> <li>Work in partnership with Katandra West Historical Group / other community groups / organisations to explore the feasibility of using the community halls</li> <li>Explore feasibility of a Men's Shed</li> </ul>	<ul style="list-style-type: none"> <li>Katandra West Community Plan Committee (KWPC)</li> <li>GSCC - Works</li> <li>Katandra West Historical group</li> <li>Community</li> <li>Recreation Reserve Committee</li> <li>Community organisations</li> </ul>	<b>2017/2018 High</b>	An approach by the Katandra West historical group to use the KW community hall to exhibit their collection. A proposed Men's Shed is being explored. Awaiting feedback from Audit to determine facility viability for ongoing use	Social/Built
Advocate for <b>improved mobile reception</b> in Katandra West	<ul style="list-style-type: none"> <li>Advocate with council and relevant telecommunications companies for inclusion in Mobile Coverage Programme</li> </ul>	<ul style="list-style-type: none"> <li>GSCC</li> <li>Telecommunications companies</li> <li>Community</li> </ul>	<b>High Ongoing</b>	Petition presented to Senator Bridgette McKenzie Avocation through Stephen Tinker – Telstra Area General Manager Submission to the Mobile Coverage programme Discussion Paper Not included in most recent funding	Built
<b>Men's Shed</b>	<ul style="list-style-type: none"> <li>Establish longer lease of the hall</li> </ul>	<ul style="list-style-type: none"> <li>KWCPC</li> <li>Katandra &amp; District Men's Shed</li> <li>GSCC</li> <li>Men's Shed Association of Australia</li> </ul>	<b>2017/2018 High</b>	Men's Shed formed, awaiting incorporation and longer lease for the hall	Social
Establish a home for the <b>Historical Society</b>	<ul style="list-style-type: none"> <li>Develop a business/strategic plan for the requirements of the Society</li> <li>Investigate potential locations and funding streams</li> </ul>	<ul style="list-style-type: none"> <li>KWCPC</li> <li>Katandra and District Historical Society</li> </ul>	<b>High</b>	Historical Society working on plans for their future, awaiting response on Hall	Social/Built
Develop a new <b>playground</b> at the Recreation Reserve	<ul style="list-style-type: none"> <li>Investigate condition of current playground</li> <li>Determine upgrade or renewal</li> </ul>	<ul style="list-style-type: none"> <li>KWCPC</li> <li>Section 86</li> <li></li> </ul>	<b>2017/2018 Medium</b>	Not commenced	Built
Improvements / maintenance of <b>roads</b>	<ul style="list-style-type: none"> <li>Develop list of roads requiring works and discuss with GSCC</li> <li>Address issue of square end to traffic island on Queens Street near school crossing</li> </ul>	<ul style="list-style-type: none"> <li>Community</li> <li>GSCC</li> </ul>	<b>Ongoing Medium</b>	List has been developed and advocated for	Built

Goal	Actions	Partnerships	Timeframes	Status	Strategic Goals (i.e Council pillar)
Establish a <b>CERT</b> (Community Emergency Response Team)	<ul style="list-style-type: none"> <li>Hold meeting to determine community interest</li> <li>Train register of volunteers and acquire required resources</li> </ul>	<ul style="list-style-type: none"> <li>KWPC</li> <li>Community</li> <li>Ambulance Victoria</li> </ul>	<b>2017/2018</b> <b>Medium</b>	Commenced Meeting occurred with community	Social
Improve condition of <b>footpaths</b>	<ul style="list-style-type: none"> <li>Develop list of relevant footpaths</li> <li>Advocate for Missing Links funding</li> </ul>	<ul style="list-style-type: none"> <li>Community</li> <li>GSCC</li> </ul>	<b>2017/2018</b> <b>Medium</b>	New footpaths capital bid wasn't approved in 2013/2014 budget. Work with GSCC to strengthen the bid due to safety issues Queen St path Included in 2017/2018 capital budget bidding process, awaiting confirmation	Built
Organise <b>more activities for young people</b>	<ul style="list-style-type: none"> <li>Investigate options for activities / events involving young people and the community</li> <li>Investigate funding</li> <li>Partner with other organisations to host events</li> </ul>	<ul style="list-style-type: none"> <li>GSCC</li> <li>Youth organisations</li> <li>Mobile Blue light discos</li> <li>Community</li> </ul>	<b>2017/2018</b> <b>Low</b>	In progress, discussions on holding a disco and community events underway	Social
Encourage the establishment of more <b>businesses</b>	<ul style="list-style-type: none"> <li>Develop a kit to promote the positive aspects of operating a business in Katandra West</li> <li>Identify any potential businesses eg. larger supermarket, community café, hairdresser</li> </ul>	<ul style="list-style-type: none"> <li>Community</li> <li>Business owners</li> <li>GSCC</li> <li>Funding bodies</li> </ul>	<b>2017/2018</b> <b>Low</b>	Advertising businesses in the welcome pack	Economic
Improve <b>street lighting</b>	<ul style="list-style-type: none"> <li>Develop list of street lighting needs</li> </ul>	<ul style="list-style-type: none"> <li>Community</li> <li>GSCC</li> <li>Powercor</li> </ul>	<b>2017/2018</b> <b>Low</b>	Light audit being conducted by committee	Built
Continue to improve <b>storm water drainage</b> in Katandra West to reduce potential for flooding	<ul style="list-style-type: none"> <li>Identify areas that are flood prone</li> <li>Work with council to explore flooding and drainage issues</li> </ul>	<ul style="list-style-type: none"> <li>Community</li> <li>GSCC</li> <li>Emergency management organisations</li> </ul>		-Some works completed post-flood -Additional drainage installed in Queen St with school crossing upgrade. -Identifying other problem locations	Built
Extend the <b>walking/cycling track</b> around the recreation reserve to link to the township	<ul style="list-style-type: none"> <li>Form subcommittee to explore all aspects of walking / cycling trails</li> <li>Map out possible routes in conjunction with external stakeholders including GSCC</li> </ul>	<ul style="list-style-type: none"> <li>Community</li> <li>Landowners</li> <li>Business owners</li> <li>GSCC –</li> <li>Funding bodies</li> </ul>	<b>2017/2018</b> <b>Low</b>	Not commenced	Natural / Social



## Kialla Lakes Community Plan Action Plan 2017

Goal	Actions	Partnerships	Timeframe	Status	Strategic Goals (Pillars)
Install lights around Kialla Lake (lake 1) to light the footpaths (as per other lakes)	- Seek funding opportunities	Kialla Lakes Residents Group GSCC	2017/20	Not commenced	Built
Identify strategies to address speeding in the neighbourhood	- Undertake community campaign to address speeding - Advocate to Council to consider speed reduction strategies (could include speed cushions).	Kialla Lakes Residents Group GSCC	2017/18	-Meeting occurred with GSCC and Vic Pol in 2017. -Speed monitoring trailer established on regular basis. -Increased police patrols.	Social
Facilities for the community i.e. BBQ and toilets	- Investigate inclusion in Council's public toilet policy - Consider appropriate placement of toilets and BBQ, gauge community opinion on appropriate location	Kialla Lakes Residents Group GSCC	Ongoing	-BBQ and shelter constructed in 2017.	Built
Investigate and seek funding for greater use of the lakes through bird hides, jetty's and canoes	- Identify possible funding sources	Kialla Lakes Residents Group GSCC Landcare	2017/18	Not commenced	Social
Encourage responsible dog ownership through removal of waste, more dog bins and/or off leash dog park	- Identify placement of dog bins and proposed off leash dog park	Kialla Lakes Residents Group GSCC	Ongoing	-Signage audit conducted around lakes. -Committee exploring options	Built
Increasing water quality of the lakes and overall maintenance	- Seek advice from Council on water quality maintenance strategies - Increase water flow into the third lake	Kialla Lakes Residents Group GSCC		Not commenced	Natural
Walking track to Riverside Plaza.	- Clearly identify proposed route and investigate flood zones and land ownership. - Identify synergies with Council's cycling strategy	Kialla Lakes Residents Group GSCC		Not commenced	Built
Install an art mural on the back of the Kialla Lakes shop overlooking the village green	- Obtain approvals from building owner for mural - Identify possible artist to undertake the work - Apply for funds	Kialla Lakes Residents Group		Not commenced	Social

Goal	Actions	Partnerships	Timeframe	Status	Strategic Goals (Pillars)
Expand playground areas – including more adventurous facilities and shade over play areas.	<ul style="list-style-type: none"> <li>- Seek funding to undertake further works in playground facilities</li> <li>- Advocate for contrasting playground facilities to be installed in the new development that will be different to current playground facilities available in the neighbourhood.</li> </ul>	Kialla Lakes Residents Group GSCC		Not commenced	Built
Community space for groups and locals to meet	<ul style="list-style-type: none"> <li>- Gather further information on the 'space' required? What activities to take part?</li> </ul>	Kialla Lakes Residents Group GSCC		Not commenced	Social
Investigate support for establishing a community garden	<ul style="list-style-type: none"> <li>- Gauge community interest</li> <li>- Identify appropriate location</li> <li>- Meet with other community gardens established within Shepparton</li> </ul>	Kialla Lakes Residents Group Community Gardens GSCC Kialla Gardens Australian Botanic Gardens Shepparton		Not commenced	Social
Advocate for neighbourhood clean-up and anti-graffiti methods and investigate a neighbourhood watch committee.	<ul style="list-style-type: none"> <li>- Consider development of subcommittee to coordinate neighbourhood activities</li> <li>- Invite the President of the Community Safety Group – Neighbourhood Watch to attend a meeting with committee</li> </ul>	Kialla Lakes Residents Group GSCC Community Safety Group – Neighbourhood Watch (Police Service Area) Victoria Police Wipeout		Not commenced	Social
Investigate support for a playgroup	<ul style="list-style-type: none"> <li>- Gauge community interest</li> <li>- Investigate adequate facility for children available.</li> <li>- Apply for playgroup to be registered with Playgroup Victoria</li> </ul>	Kialla Lakes Residents Group Playgroup Victoria GSCC		Not commenced	Social
Maintain our open spaces	<ul style="list-style-type: none"> <li>- Develop a plan for how residents would like to utilise and appreciate the open spaces</li> </ul>	Kialla Lakes Residents Group GSCC		Not commenced	Natural

## Merrigum Community Plan Action Plan 2017

Goal	Actions	Partnerships	Timeframes	Status	Strategic Goals (i.e Council pillar)
<b>To investigate upgrades to Merrigum Pool, expanding pool opening hours and more active in pool day to day running.</b>	<ul style="list-style-type: none"> <li>Meet and discuss with GSCC to explore options of running pool and opening hours</li> <li>Consultation with Community members about a design for Splash Park</li> <li>Gather letters of support for community to be submitted with grant application being submitted by GSCC</li> </ul>	<ul style="list-style-type: none"> <li>GSCC</li> <li>Community</li> </ul>	<b>Priority</b>	Commenced <ul style="list-style-type: none"> <li>Continue to raise funds for leverage funding for equipment</li> <li>Working with Active Living department for Grant application for funding. Currently have an application in with SRV for funding of splash park</li> </ul>	Economic Built Social
<b>To attract families to live in Merrigum and more students to the school and attract wider community to Merrigum and to communicate events to the wider community</b>	<ul style="list-style-type: none"> <li>Develop a kit to promote the benefits of living in Merrigum.</li> <li>Consultation with community about positives for Merrigum</li> <li>Promotion of Merrigum</li> <li>Develop a newsletter for all of community</li> </ul>	Community GSCC Real estate agencies based in Shepparton	<b>Priority</b>	Commenced <ul style="list-style-type: none"> <li>Development of a newsletter has begun</li> </ul>	Economic
<b>To upgrade facilities at the Recreation Reserve</b>	<ul style="list-style-type: none"> <li>facilities and adjust the actions previously identified.</li> </ul>	<ul style="list-style-type: none"> <li>GSCC</li> <li>Department of Sustainability and Environment</li> <li>Merrigum Sport clubs (football, netball, tennis, cricket, bowls)</li> <li>Department of P&amp;CD</li> </ul>	<b>Priority</b>	Commenced <ul style="list-style-type: none"> <li>Through CPIF funding, the netball court has been upgraded</li> <li>Rec and Parks are currently working with user groups to review the current Master Plan</li> </ul>	Built Social
<b>To organise more activities / events</b>	<ul style="list-style-type: none"> <li>Continue meetings with GSCC to discuss the possibility of holding events or receiving support for events in the Merrigum district.</li> <li>Continue to plan and promote various events in town, in partnership with other community based groups.</li> </ul>	GSCC Community based groups.	<b>Priority</b>	Commenced <ul style="list-style-type: none"> <li>Events have been organised and run successfully.</li> <li>Other events have been run successfully without the assistance of Council funds.</li> </ul>	Social
<b>To develop more housing opportunities</b>	<ul style="list-style-type: none"> <li>Work with Developers to enhance block of land opportunities to develop housing</li> </ul>	<ul style="list-style-type: none"> <li>GSCC</li> <li>Community</li> </ul>		Commenced <ul style="list-style-type: none"> <li>Developer has purchased</li> </ul>	Economic

Goal	Actions	Partnerships	Timeframes	Status	Strategic Goals (i.e Council pillar)
	prospects			site and promotion has begun	
To upgrade and maintain walking / cycling track	<ul style="list-style-type: none"> <li>Identify areas in need of an upgrade and any potential future extensions.</li> <li>Initiate discussions with GSCC to seek support and resources to upgrade and maintain the walking / cycling track in Merrigum.</li> <li>Identify areas and implement signage for the walking track</li> </ul>	<ul style="list-style-type: none"> <li>GSCC</li> <li>Community</li> </ul>		Not commenced <ul style="list-style-type: none"> <li>5 year review of plan will identify if this is to be a priority.</li> </ul>	Social Built
To develop more infrastructure and organise more activities for young people	<ul style="list-style-type: none"> <li>Initiate discussions with GSCC and other relevant organisations to establish a youth program / activities in Merrigum.</li> </ul>	Churches Scouts and Guides Police Local youth organisations (Word and Mouth) GSCC		Commenced <ul style="list-style-type: none"> <li>Through development and design of the Splash Park at Pool. Youth events with the support of Word &amp; Mouth and Activities in the Park will be activated.</li> </ul>	Social
To improve street scaping	<ul style="list-style-type: none"> <li>Undertake an audit of all street plantings and furnishings</li> <li>Initiate a meeting with GSCC to develop a shared vision for the streetscapes.</li> </ul>	GSCC		Not commenced <ul style="list-style-type: none"> <li>5 year review of plan will identify if this is to be a priority.</li> </ul>	Natural
To improve and develop additional footpaths	<ul style="list-style-type: none"> <li>Undertake an audit of existing footpaths</li> <li>Meet with GSCC to identify a process for improving and developing footpaths in accordance with Council's policy, resource availability and community need.</li> </ul>	GSCC		Not commenced <ul style="list-style-type: none"> <li>5 year review of plan will identify if this is to be a priority.</li> </ul>	Built

## Mooroopna Community Plan Action Plan 2017

Goal	Actions	Partnerships	Priority	Status	Strategic Goals (Council Pillar)
Support the implementation of the Ferrari Park masterplan	<ul style="list-style-type: none"> <li>- Identify priorities within the masterplan               <ol style="list-style-type: none"> <li>1. Formalise parking</li> <li>2. Power for market sites</li> <li>3. Tourist Information board</li> </ol> </li> <li>- Seek funding opportunities</li> </ul>	Mooroopna Community Plan (MCP) GSCC Community members	High	Masterplan was adopted by Council in 2014. A functional layout design being developed for the parking – deemed as highest priority for masterplan	Built Social
Support the implementation of the McLennan Street masterplan	<ul style="list-style-type: none"> <li>- Identify priorities within the masterplan</li> <li>- Seek funding opportunities</li> <li>- Signage regarding parking available in Mooroopna</li> <li>- Free wifi / power points for chargers</li> </ul>	MCP GSCC	High	Committee and broader community advocating for implementation of the masterplan. A capital bid has been entered for implementation of the first section – TBC	Built
Improve access and perceptions of safety at the Mooroopna Railway Station	<ul style="list-style-type: none"> <li>- Liaise with VicTrack and VLine</li> <li>- Investigate pedestrian track</li> <li>- Additional lighting</li> <li>- Clearing of trees for improved line of sight</li> </ul>	Mooroopna Community Plan (MCP) GSCC VLine VicTrack	High	Numerous site visits been undertaken with key stakeholders. Report currently being prepared for Council's Executive to be reviewed.	Advocacy
Support the implementation of the RiverConnect Paths Strategy	<ul style="list-style-type: none"> <li>- Identify priorities within the masterplan               <ol style="list-style-type: none"> <li>1. Kidstown to Gemmills Swamp</li> </ol> </li> <li>- Seek funding opportunities</li> </ul>	MCP GSCC RiverConnect Parks Victoria	Medium	Paths strategy has been adopted by Council. Seeking capital budget funding. Committee are supporting events in river environs/	Natural
Support the development of walking tracks in and around Mooroopna	<ul style="list-style-type: none"> <li>- Support the implementation of the RiverConnect Paths Strategy</li> <li>- Investigate urban walking tracks and connections</li> <li>- Walking tracks to improve access to Rodney Park Village</li> </ul>	MCP GSCC	Medium	Committee have partnered with RiverConnect on a number of events.	Built Natural
Support the use and development of the Mooroopna Pool	<ul style="list-style-type: none"> <li>- Seek involvement with the implementation of the Greater Shepparton Pools Strategy</li> </ul>	MCP GSCC	Medium	A Community Working Group has been established and will work collectively on projects and events aimed at increasing local residents attendance at the Pool	Built
Encourage development of shop owners <ul style="list-style-type: none"> <li>- Promotion</li> <li>- New business</li> </ul>	<ul style="list-style-type: none"> <li>- Develop shop local campaigns – catch phrases and promotion</li> <li>- Identification of new niche business</li> </ul>	MCP Businesses Greater Shepparton Business Centre	Medium	Business Networking Event held in October 2017	Economic

Goal	Actions	Partnerships	Priority	Status	Strategic Goals (Council Pillar)
- Tidy up McLennan Street (shop fronts and fill businesses)					
Support Stevens Crescent residents to advocate for improvements	<ul style="list-style-type: none"> <li>- Assist local residents to host community activity</li> <li>- Work with Council's Parks, Sport and Recreation Team to identify options for play infrastructure</li> </ul>	MCP GSCC Community members	High	Residents have prioritised a half basketball court. Fundraising by community and Council almost complete.	Built Social
Identify opportunities to promote current and new community events	<ul style="list-style-type: none"> <li>- Investigate a range of methods of promotion.</li> <li>- Consider a community website</li> <li>- Rotary's projector project</li> <li>- Support community organisations to identify further promotion opportunities</li> <li>- Advocacy</li> </ul>	Mooroopna Community Plan (MCP) Community groups Organisations Mooroopna Education and Activity Centre (MEAC)	High	Not commenced	Social
Identify opportunities to promote Aboriginal art and history into public spaces.	<ul style="list-style-type: none"> <li>- Community art projects (murals, sculptures, story boards, recognition)</li> <li>- Support activities and promotion of NAIDOC week</li> <li>- Community memorial garden</li> </ul>	MCP Rumbalara Kidstown	High	Looking at Aboriginal component to be included within the Mooroopna Pool project.	Social
Bring community groups and organisations together to allow opportunity for cross promotion	<ul style="list-style-type: none"> <li>- Investigate appropriate opportunities</li> </ul>	MCP Service Clubs Community Organisation	Medium	Mooroopna Pool mural is an upcoming project	Social
Community art projects including sculptures and murals which will promote the identity of Mooroopna	<ul style="list-style-type: none"> <li>- Seek funds for community art projects</li> </ul>	MCP Community groups Organisations	Medium	As above	Social
More information for newcomers to Mooroopna, including encouraging people to come to the area.	<ul style="list-style-type: none"> <li>- Investigate opportunities for online, hard copy or face to face activities</li> </ul>	MCP MEAC Community groups Organisations	Low	Not commenced	Social
Identification and promotion of volunteering opportunities in Mooroopna	<ul style="list-style-type: none"> <li>- Identify opportunities particularly available to young people</li> <li>- Utilise information within Council's Quick Reference Guide to volunteering</li> </ul>	MCP Mooroopna Secondary College GSCC	Low	Not commenced	Social
Establish a Tourism Working	<ul style="list-style-type: none"> <li>- Investigate likeminded / current</li> </ul>	Mooroopna Community Plan	High	Not commenced	Economic

Goal	Actions	Partnerships	Priority	Status	Strategic Goals (Council Pillar)
Group	group to work on tourism related projects	(MCP)			Social
Investigate the possibility of establishing a Tourist Centre / Information Hub in Mooroopna	<ul style="list-style-type: none"> <li>- Undertake a feasibility study</li> <li>- Investigate possible locations including co-locating.</li> <li>- Installation of Visitors Board in Ferrari Park</li> </ul>	MCP GSCC Tourism operators	Medium	Not commenced	Economic Social
Undertake tourism projects such as signage	<ul style="list-style-type: none"> <li>- Link signage projects with key tourist attractions</li> </ul>	MCP Tourism operators	Medium	Not commenced	Economic Social
Attract major events for the town	<ul style="list-style-type: none"> <li>- Determine which major events to focus on through discussion with community and other key stakeholders</li> <li>- Discuss potential opportunities with GSCC Events Team</li> </ul>	MCP GSCC Activities in the Park	Low	Not commenced	Economic Social
Develop an Environment Working Group to develop a plan for all parks and rivers area – including beautification and signage	<ul style="list-style-type: none"> <li>- Consider combining the Gemmill Working group into this group</li> <li>- Undertake an audit of environmental facilities</li> <li>- Undertake community projects in each area</li> </ul>	Mooroopna Community Plan (MCP) Gemmill's Working Group GSCC & RiverConnect	High	Not commenced	Natural
Develop Kalethiban Park as an entrance to the river at Mooroopna	<ul style="list-style-type: none"> <li>- Develop concept plan for the area</li> <li>- Investigate clean up, chairs, tables, access, improved boat ramp and signage, accessibility</li> </ul>	MCP Parks Victoria GSCC & RiverConnect Shepparton - Mooroopna Urban Landcare Group	High	RiverConnect and Committee have partnered for community clean up events.	Natural
Develop Gemmill's Swamp	<ul style="list-style-type: none"> <li>- Walking paths, interpretive signage, tables, chairs, bins, educational programs, signage, story boards, accessibility and viewing platforms</li> </ul>	MCP Parks Victoria Rumbalara GSCC & RiverConnect Shepparton - Mooroopna Urban Landcare Group	High	Gemmill Swamp Working group commenced after the plan was developed in 2010.	Natural
Develop a natural environment plan	<ul style="list-style-type: none"> <li>- Advocate to bring together all interest groups to develop an agreed plan</li> </ul>	MCP GSCC Parks Victoria GSCC & RiverConnect	Medium	Not commenced	Natural
To support the development of a Business / Traders Working	<ul style="list-style-type: none"> <li>- Establish a group</li> <li>- Invite business owners to</li> </ul>	Mooroopna Community Plan (MCP)	High	Not commenced	Economic

Goal	Actions	Partnerships	Priority	Status	Strategic Goals (Council Pillar)
Group to promote employment and growth of business in Mooroopna	<ul style="list-style-type: none"> <li>- Community Plan Business Working Group</li> <li>- Develop a 12 month plan of activities to promote business</li> <li>- Engage with Council to communicate business ideas</li> <li>- Support activities</li> <li>- Investigate partnerships with Shepparton Show Me and Shepparton Chamber of Commerce</li> </ul>	Businesses			
Support the review and implementation of the Mooroopna Recreation Reserve masterplan	<ul style="list-style-type: none"> <li>- Identify priorities within the masterplan</li> </ul>	MCP GSCC	Medium	Not commenced	Built
Enhancement to the open space in Craigmuir Lakes	<ul style="list-style-type: none"> <li>- Seek funding for shade structure</li> </ul>	MCP	Medium	Advocate for inclusion in roll out of municipal festive decoration in Mooroopna	Built
Support the use and development of halls in Mooroopna	<ul style="list-style-type: none"> <li>- Advocacy for funding opportunities</li> <li>- Develop list of community spaces available for hire in Mooroopna</li> </ul>	MCP	Low	Not commenced	Built
Retain the identity of the old Mooroopna hospital	<ul style="list-style-type: none"> <li>- Develop a strategy / community campaign</li> <li>- Develop a vision of what could be done.</li> </ul>	MCP Private owner	High	Not commenced	Advocacy
Advocate for improved public transport within Mooroopna, to Shepparton and to Melbourne	<ul style="list-style-type: none"> <li>- Formalise channel /conduit between the community and Council/ governing bodies to advocate for community issues</li> </ul>	MCP Public Transport Victoria	Medium	Not commenced	Advocacy
Advocate to fast track the bypass / freight hub	<ul style="list-style-type: none"> <li>- Keep on agenda at all audiences.</li> </ul>	MCP GSCC State and Federal Government	Medium	Not commenced	Advocacy Economic
Advocate for improvements to roads, footpaths and parking, including long vehicle parking	<ul style="list-style-type: none"> <li>- Improvements to Echuca Road, crossing of Echuca Road</li> </ul>	MCP GSCC VicRoads	Low	Not commenced	Advocacy



## Murchison Community Plan Action Plan 2017

Goal	Actions	Partnerships	Timeframe	Status	Strategic Goals
Support the provision of children's services/facilities (i.e. participation in the creation of the Murchison Youth SPOT)	<ul style="list-style-type: none"> <li>Work with Council and other organisations to scope out options for youth services and facilities</li> <li>Source funding to implement identified events/projects</li> </ul>	<ul style="list-style-type: none"> <li>Murchison Community Plan Committee (MCP)</li> <li>GSCC</li> <li>Ramp It Up Committee</li> </ul>	2017/18	-Planning underway for Murchison Youth SPOT. Implementation to occur 2018.	Social
Engage with Council and Recreation Reserve to develop a master plan	<ul style="list-style-type: none"> <li>Liaise with Recreation Reserve to assist in the community engagement stage of a master plan</li> </ul>	<ul style="list-style-type: none"> <li>MCP</li> <li>Recreation Reserve committee</li> <li>GSCC</li> </ul>	2017/18	-Recreation Reserve committee is sourcing quotes from consultants.	Built
Extend the Rail Trail to Murchison East	<ul style="list-style-type: none"> <li>Assess feasibility of project in partnership with GSCC</li> <li>Source required funding</li> </ul>	<ul style="list-style-type: none"> <li>MCP</li> <li>GSCC</li> <li>Community</li> </ul>	2017/18/19/20	-Feasibility is underway (2017/18)	Built
Support diversity in business to increase employment opportunities and increase retail opportunities	<ul style="list-style-type: none"> <li>Work with businesses to identify areas of potential development</li> </ul>	<ul style="list-style-type: none"> <li>MCP</li> <li>Businesses</li> </ul>		-Business evening occurred (2017)	Economic
Creation of 4 iconic town entrances	<ul style="list-style-type: none"> <li>Work with GSCC to investigate the scope and feasibility of the project</li> <li>Source potential funding</li> </ul>	<ul style="list-style-type: none"> <li>MCP</li> <li>GSCC</li> <li>Community</li> </ul>	2017/18/19	-Meeting occurred with Parks and Recreation to begin development of project (2017)	Natural
Support all community events (e.g. Christmas, Cinema nights)	<ul style="list-style-type: none"> <li>Support/facilitate community events where possible</li> </ul>	<ul style="list-style-type: none"> <li>MCP</li> <li>Community</li> </ul>	Ongoing		Social
Support the swimming pool committee	<ul style="list-style-type: none"> <li>Provide assistance to the swimming pool committee on a case by case basis</li> </ul>	<ul style="list-style-type: none"> <li>MCP</li> <li>Swimming pool committee</li> </ul>			Advocacy
Support the development of a tourism strategy for Murchison (i.e. signage, website, heritage tours)	<ul style="list-style-type: none"> <li>Liaise with GSCC to scope potential project guidelines and parameters.</li> <li>Source funding as required</li> </ul>	<ul style="list-style-type: none"> <li>MCP</li> <li>GSCC</li> <li>Businesses</li> <li>Local tourism providers</li> </ul>			Economic
Continue supporting the development and operation of Days Mills	<ul style="list-style-type: none"> <li>Liaise with Days Mill to develop partnership opportunities</li> </ul>	<ul style="list-style-type: none"> <li>MCP</li> <li>Days Mill</li> </ul>			Advocacy

Footpath, curb and channel installation and upgrades	<ul style="list-style-type: none"> <li>• Work with Council to identify problem areas</li> <li>• Council to implement paths as funding available</li> </ul>	<ul style="list-style-type: none"> <li>• MCP</li> <li>• GSCC</li> </ul>	2016/17/18	<ul style="list-style-type: none"> <li>-Footpath put into Station Street.</li> <li>-Design underway for Impey Street (2017)</li> </ul>	Built
Extend Rail Trail to Rushworth	<ul style="list-style-type: none"> <li>• Advocate to Campaspe Shire to implement Rail Trail from within their municipality</li> </ul>	<ul style="list-style-type: none"> <li>• MCP</li> <li>• Campaspe Shire Council</li> </ul>		<ul style="list-style-type: none"> <li>-Campaspe Shire investigating potential funding sources for the Rail Trail</li> </ul>	Advocacy
Support the building and development of the Murchison Men's Shed	<ul style="list-style-type: none"> <li>• Work in partnership with Murchison Neighbourhood House to support the Men's Shed Group</li> </ul>	<ul style="list-style-type: none"> <li>• MCP</li> <li>• Murchison Neighbourhood House</li> </ul>	Ongoing	<ul style="list-style-type: none"> <li>-Men's Shed Group received funding (2016) to assist with insulation of work shed</li> </ul>	Advocacy
Support a cleaner, greener Murchison (i.e. Clean Up Murchison Day)	<ul style="list-style-type: none"> <li>• Investigate options for facilitating clean up days and any other actions that may achieve this goal</li> </ul>	<ul style="list-style-type: none"> <li>• MCP</li> <li>• Community</li> </ul>			Natural
Support the development of accommodation options for older adults and low income earners in partnership with local groups	<ul style="list-style-type: none"> <li>• Partner with private investors and explore accommodation options</li> </ul>	<ul style="list-style-type: none"> <li>• MCP</li> <li>• Businesses</li> </ul>			Advocacy
Construction of a boat ramp (determine appropriate location)	<ul style="list-style-type: none"> <li>• Consult with community to establish desire location</li> <li>• Seek relevant permissions from GSCC and Parks Victoria</li> <li>• Source funding</li> </ul>	<ul style="list-style-type: none"> <li>• MCP</li> <li>• Community</li> <li>• Parks Victoria</li> <li>• GSCC</li> </ul>			Built
Community education classes	<ul style="list-style-type: none"> <li>• Investigate what classes may be available for community members to teach</li> <li>• Gauge community interest and potential locations</li> </ul>	<ul style="list-style-type: none"> <li>• MCP</li> <li>• Community</li> </ul>			Social
Redevelopment of Meteorite Park	<ul style="list-style-type: none"> <li>• Investigate potential redevelopment options for the park</li> <li>• Obtain relevant permissions</li> <li>• Source funding as required</li> </ul>	<ul style="list-style-type: none"> <li>• MCP</li> <li>• GSCC</li> <li>• Community</li> </ul>			Built
Conversion of toilets to composting type	<ul style="list-style-type: none"> <li>• Liaise with GSCC to explore potential options for this</li> </ul>	<ul style="list-style-type: none"> <li>• MCP</li> <li>• GSCC</li> </ul>			Built
Support/encourage activities arranged by Council and other local organisations	<ul style="list-style-type: none"> <li>• Work with organisations to help promote their events in all identified means</li> </ul>	<ul style="list-style-type: none"> <li>• MCP</li> <li>• Community</li> </ul>			Social
Cycling path to Tatura	<ul style="list-style-type: none"> <li>• Investigate potential paths via a feasibility study</li> <li>• Source funding as required</li> </ul>	<ul style="list-style-type: none"> <li>• MCP</li> <li>• GSCC</li> <li>• Vic Roads</li> </ul>			Built

Sculpture installed on the Rail Trail	<ul style="list-style-type: none"> <li>Determine what sculpture will be of</li> <li>Source required funding</li> </ul>	<ul style="list-style-type: none"> <li>MCP</li> <li>GSCC</li> <li>Community</li> </ul>			Built
Establish Park Run in Murchison	<ul style="list-style-type: none"> <li>Work with interested parties to organise an event</li> </ul>	<ul style="list-style-type: none"> <li>MCP</li> <li>Community</li> </ul>			Social
Preservation, restoration and maintenance of heritage buildings	<ul style="list-style-type: none"> <li>Partner with the Historical Society to identify historically significant buildings</li> <li>Source funding for restoration activities (including GSCC heritage grant)</li> </ul>	<ul style="list-style-type: none"> <li>MCP</li> <li>Historical Society</li> <li>GSCC</li> </ul>			Advocacy
Playground at Recreation Reserve	<ul style="list-style-type: none"> <li>Partner with Recreation Reserve committee to help source design/funding</li> </ul>	<ul style="list-style-type: none"> <li>MCP</li> <li>Recreation Reserve Committee</li> </ul>			Built
Development of a gym	<ul style="list-style-type: none"> <li>Partner with any private businesses to explore gym options within Murchison or;</li> <li>Scope potential sites for outdoor fitness equipment and source required permissions and funding</li> </ul>	<ul style="list-style-type: none"> <li>MCP</li> <li>Businesses</li> <li>GSCC</li> </ul>			Built
Youth support services	<ul style="list-style-type: none"> <li>Investigate potential youth support options for Murchison</li> </ul>	<ul style="list-style-type: none"> <li>MCP</li> <li>Community</li> </ul>			Social
Support diversity in business to increase employment opportunities and increase retail opportunities	<ul style="list-style-type: none"> <li>Work with businesses to identify areas of potential development</li> </ul>	<ul style="list-style-type: none"> <li>MCP</li> <li>Businesses</li> </ul>			Economic
Attract café to the riverbank	<ul style="list-style-type: none"> <li>Scope options to attract new businesses to Murchison</li> </ul>	<ul style="list-style-type: none"> <li>MCP</li> <li>Businesses</li> </ul>			Economic
Better management of public space around Campbell's Bend	<ul style="list-style-type: none"> <li>Work with GSCC and Parks Victoria to investigate potential options for improving this area</li> </ul>	<ul style="list-style-type: none"> <li>MCP</li> <li>Parks Victoria</li> <li>GSCC</li> </ul>			Natural
Signage indicating the location of community services	<ul style="list-style-type: none"> <li>Liaise with GSCC to have potential additional signage installed</li> </ul>	<ul style="list-style-type: none"> <li>MCP</li> <li>GSCC</li> </ul>			Built
Streetscape/beautification of the main street, including roads and landscaping	<ul style="list-style-type: none"> <li>Investigate beautification options with GSCC</li> <li>Source funding as required</li> </ul>	<ul style="list-style-type: none"> <li>MCP</li> <li>GSCC</li> </ul>			Built
Safe crossing point – Pub to Post Office	<ul style="list-style-type: none"> <li>Investigate feasibility of installation of infrastructure here with GSCC</li> <li>Installation to occur when funding becomes available</li> </ul>	<ul style="list-style-type: none"> <li>MCP</li> <li>GSCC</li> <li>Vic Roads</li> </ul>		-Design work for safe crossing point has occurred (2017)	Built

Traffic lights	<ul style="list-style-type: none"> <li>Scope potential locations for lights with GSCC and Vic Roads</li> </ul>	<ul style="list-style-type: none"> <li>MCP</li> <li>GSCC</li> <li>Vic Roads</li> </ul>			Built
Improve parking on main street	<ul style="list-style-type: none"> <li>Work with GSCC to improve parking options</li> </ul>	<ul style="list-style-type: none"> <li>MCP</li> <li>GSCC</li> </ul>			Built
Truck bypass around town	<ul style="list-style-type: none"> <li>Advocate to Vic Roads for this project to occur</li> </ul>	<ul style="list-style-type: none"> <li>MCP</li> <li>Vic Roads</li> </ul>			Advocacy
Upgrade Tatura/Murchison Road	<ul style="list-style-type: none"> <li>Advocate to Vic Roads for this project to occur</li> </ul>	<ul style="list-style-type: none"> <li>MCP</li> <li>Vic Roads</li> </ul>			Advocacy

## Seven Creeks Community Plan Action Plan 2017

Goal	Actions	Partnerships	Timeframes	Status	Strategic Goals (i.e Council pillar)
<b>Passive Open Space</b>	<ul style="list-style-type: none"> <li>Connect the Seven Creeks Estate and Raftery Road to the Shepparton shared path network</li> <li>Link Estate via walking/cycling track to Emerald Bank</li> </ul>	<ul style="list-style-type: none"> <li>GSCC</li> <li>Funding bodies</li> <li>Community</li> </ul>	<b>Priority</b>	<ul style="list-style-type: none"> <li>In Cycling Strategy for connection to broader shared path network.</li> <li>Community establishing walking group to gauge interest in walking path.</li> </ul>	Social /Natural
<b>Recreation Space Around the Oval</b>	<ul style="list-style-type: none"> <li>Half-court basketball ring</li> <li>BBQ to be included in shelter</li> <li>Exercise equipment to around the walking tracks</li> <li>Additional seating around wetlands Labyrinth for park land</li> </ul>	<ul style="list-style-type: none"> <li>Community</li> <li>GSCC</li> </ul>	<b>Priority</b>		Social
<b>Raftery Road</b>	<ul style="list-style-type: none"> <li>Drainage</li> <li>Improve entrance to Kialla Park</li> <li>Improve signage to Kialla Park</li> <li>Improved street lighting</li> <li>Formalise entrance to Seven Creeks Drive</li> </ul>	<ul style="list-style-type: none"> <li>Community</li> <li>Powercor</li> <li>GSCC</li> </ul>	<b>Priority</b>	<ul style="list-style-type: none"> <li>Further discussions with the Committee are required regarding the remaining actions for this goal.</li> </ul>	Built
Neighbourhood Safety	<ul style="list-style-type: none"> <li>Establishment of Neighbourhood watch program</li> <li>Signage in Estate – Children playing</li> <li>Safe travel routes for children along Raftery Road and within estate areas</li> </ul>	<ul style="list-style-type: none"> <li>Community</li> <li>Police Service Area committee</li> <li>GSCC</li> </ul>	TBC	<ul style="list-style-type: none"> <li>Initialised joining Shepparton Neighbourhood Watch Program with event to occur in October 2016</li> </ul>	Social
Social Connections	<ul style="list-style-type: none"> <li>General get together for specific celebrations such as Christmas</li> </ul>	<ul style="list-style-type: none"> <li>Community</li> <li>GSCC</li> <li>Funding bodies</li> </ul>	TBC	<ul style="list-style-type: none"> <li>Group hosting first aid training for community members in 2015</li> <li>Group continuing to host annual Christmas celebration with support of Council.</li> <li>Other events TBC inc Tai Chi with Chai Tea</li> </ul>	Social
	<ul style="list-style-type: none"> <li>Increase use of facilities at Kialla Sports Club for community events, such as craft days or twilight cinema etc.</li> </ul>	<ul style="list-style-type: none"> <li>Community</li> <li>Rec Reserve Committee</li> <li>GSCC</li> </ul>	TBC	<ul style="list-style-type: none"> <li>The development of a masterplan for the Kialla Park Recreation Reserve is completed. Committee have</li> </ul>	Social

Goal	Actions	Partnerships	Timeframes	Status	Strategic Goals (i.e Council pillar)
				contributed to the development of the plan	
Group suggestions	<ul style="list-style-type: none"> <li>Enforcement of land owners to maintain vacant blocks</li> </ul>	<ul style="list-style-type: none"> <li>Community</li> <li>CFA</li> <li>GSCC</li> </ul>	TBC	Not commenced	Built
	<ul style="list-style-type: none"> <li>Maintenance of footpaths to allow clear access</li> </ul>	<ul style="list-style-type: none"> <li>Community</li> <li>GSCC</li> </ul>	TBC	Not commenced	Built
	<ul style="list-style-type: none"> <li>Increased maintenance of roundabouts within the Seven Creeks estate</li> </ul>	<ul style="list-style-type: none"> <li>Community</li> <li>GSCC</li> </ul>	TBC	Not commenced	Built

## Shepparton East Community Plan Action Plan

Goal	Actions	Partnerships	Timeframes	Status	Strategic Goals
Child Road Safety: <ul style="list-style-type: none"> <li>Lowered speed limit near Kindergarten</li> <li>Sealed school car park</li> <li>Install light at school car park</li> <li>Separate entry/exit at Isabel Pearce Kindergarten</li> <li>Flashing lights on Hosie Road/ School Road</li> <li>Footpath along Hosie Road</li> </ul>	-Engage consultant to create a child road safety strategy or; -Have concept designs created on a per project basis -Seek funding/grants for actions identified in strategy	-Shepparton East Locality Plan Group -GSCC -VicRoads -Isabel Pearce Kindergarten -SEPS - DEECD	2016/2017/2018	-EOI submitted for solar light at school carpark	Built
Upgrades to Central Park Recreation Reserve: <ul style="list-style-type: none"> <li>Develop Master plan</li> <li>Combining tennis courts and netball courts at Central Park Recreation Reserve, including relocation of lighting; or upgrading the existing courts without combining them (high priority)</li> <li>Improved drainage at Central Park Recreation Reserve (medium priority)</li> <li>Upgrade of small clubhouse facilities at recreation reserve, including adding female change rooms and general maintenance to existing rooms</li> </ul>	-Consultant to develop master plan (needed to secure funding in many instances) -Concept plan to be drawn up for each project -Funding/grant to be secured for each project	-Shepparton East Locality Plan Group -Central Park Recreation Reserve committee -GSCC -Sports clubs	2017/2018/2019	-Confirmed Masterplan being developed in 2017/18 -Drainage works are currently being undertaken	Built

<p>Beautification of Shepparton East, including:</p> <ul style="list-style-type: none"> <li>• Advocacy for better landscaping maintenance</li> <li>• Adding additional trees to the area</li> </ul>	<ul style="list-style-type: none"> <li>- Advocate for inclusion into Council's small town entry sign program</li> <li>-Liaise with landscaping company to draft concept plans of town entrances/other beautification ideas</li> <li>-Receive permissions from relevant groups</li> <li>-Apply for funding/grant to implement concepts</li> </ul>	<ul style="list-style-type: none"> <li>-Shepparton East Locality Plan Group</li> <li>-GSCC</li> <li>-VicRoads</li> </ul>	<b>2017/18</b>	<ul style="list-style-type: none"> <li>-Landscaping maintenance schedule created by GSCC for Shepparton East (ongoing advocacy)</li> <li>-Noticeboard installed 2017</li> <li>-Entry signage installed 2017</li> </ul>	Natural
<p>Walking track from Doyle's Road to Shepparton East along Midland Highway</p>	<ul style="list-style-type: none"> <li>-Concept plan drawn up (completed)</li> <li>-Capital bid to be submitted (completed)</li> <li>- Investigate community interest in setting up a walking group</li> </ul>	<ul style="list-style-type: none"> <li>-Shepparton Locality Plan Group</li> <li>-GSCC</li> <li>-VicRoads</li> </ul>	<b>2016/2017/2018</b>	<ul style="list-style-type: none"> <li>-Concept designs have been completed by GSCC</li> <li>- GSCC capital budget bid submitted for 2017/18</li> </ul>	Built/Social
<p>Tables, benches, BBQ and drinking water at O'Donnell Park, as well as signage and play equipment</p>	<ul style="list-style-type: none"> <li>-Liaise with GSCC department about requirements and location of infrastructure</li> <li>-Funding/grant to be applied for</li> </ul>	<ul style="list-style-type: none"> <li>-Shepparton East Locality Plan Group</li> <li>-GSCC</li> </ul>	<b>2016/17</b>	<ul style="list-style-type: none"> <li>-Picnic setting installed 2016</li> <li>-Drinking fountain to be investigate for 2016/17</li> </ul>	Built/Social
<p>Acquiring a bus service and shelter in Shepparton East</p>	<ul style="list-style-type: none"> <li>-Discuss possibilities with Shepp Transit</li> <li>-Build community support</li> <li>-Apply for grant/funding for shelter</li> </ul>	<ul style="list-style-type: none"> <li>-Shepparton East Locality Plan Group</li> <li>-Shepp Transit</li> <li>-GSCC</li> </ul>		Not commenced	Advocacy
<p>Creating a sports development program between the school, kinder and sporting clubs</p>	<ul style="list-style-type: none"> <li>-Investigate feasibility of setting up a program/s</li> <li>-Liaise with DEECD to understand all requirements</li> </ul>	<ul style="list-style-type: none"> <li>-Shepparton East Locality Plan Group</li> <li>-Isabel Pearce Kindergarten</li> <li>-Shepparton East Primary School (SEPS)</li> <li>-Sporting Clubs</li> <li>-DEECD</li> <li>-Valley Sport</li> </ul>		Not commenced	Social
<p>More community events (e.g. movie night, cultural festival, community BBQ, Christmas event)</p>	<ul style="list-style-type: none"> <li>-Form sub-committee to establish a calendar of events</li> <li>-Liaise with potential stallholders, entertainment, food sellers etc</li> <li>-Event form (if reqd)</li> </ul>	<ul style="list-style-type: none"> <li>-Shepparton East Locality Plan Group</li> <li>-Central Park Recreation Reserve</li> <li>-GSCC</li> <li>-Businesses</li> <li>-Orchardists</li> </ul>		Not commenced	Social
<p>Forming/building a Men's Shed group</p>	<ul style="list-style-type: none"> <li>-Gather initial interest from local residents</li> <li>- Investigate / visit established Men's Sheds</li> <li>-Establish temporary workshop for interested persons</li> <li>-Apply for Men's Shed grant</li> </ul>	<ul style="list-style-type: none"> <li>-Shepparton East Locality Plan Group</li> <li>-GSCC</li> <li>-Men's Shed Australia</li> </ul>		Not commenced	Social



Forming a youth community group	-Gauge interest from local youth oriented groups (SEPS, sports clubs) -Formalise meeting places, activities, etc.	-Shepparton East Locality Plan Group -SEPS		Not commenced	Social
Better promotion of Shepparton East's businesses (e.g. newsletter with business ads, Facebook page promotion, etc.)	-Contact all businesses for current contact details -Build newsletter, Facebook page -Apply for grant/funding to build potential noticeboard	-Shepparton East Locality Plan Group -Local businesses		Not commenced	Economic
Advocate for rezoning of the area to allow non-agricultural oriented businesses	-Liaise with GSCC planners -Build support from potential business operators	-Shepparton East Locality Plan Group -GSCC		Not commenced	Economic
Upgrade drainage throughout Shepparton East	-Liaise with GSCC	-Shepparton East Locality Plan Group -GSCC		-Drainage Scheme passed by Councillors 2015	Built
Better road lighting in Shepparton East	-Liaise with GSCC - Identify funding sources	-Shepparton East Locality Plan Group -GSCC -VicRoads		Not commenced	Built
Public toilet in Shepparton East	- Apply for inclusion in Council's Public Toilet Policy -Identify suitable location for toilet -Capital bid to be submitted	-Shepparton East Locality Plan Group -GSCC		Not commenced	Built
Advocate for houses to be built on smaller blocks (currently there are restrictions on land sizes for house building → prohibited on farming zoned land less than 40 h.a.)	-Liaise with GSCC Planning Department -Build public support for rezoning	-Shepparton East Locality Plan Group -Victoria Government -GSCC		Not commenced	Advocacy
Advocate for access to utility services (natural gas, sewerage, town water)	-Initiate discussion with GV water, Envestra and other relevant agencies -Build community support	-Shepparton East Locality Plan Group -GV Water -Envestra -GSCC		Not commenced	Advocacy
Advocate for underground/higher power lines on service road next to Midland Highway	-Contact powercor, GSCC, businesses -Explore cost and funding opportunities	-Shepparton East Locality Plan Group -Powercor -Vic Roads		Not commenced	Advocacy

## St George's Road Community Plan Action Plan 2017

Goal	Actions	Partnerships	Priority	Status	Strategic Goals
More local events in the area	-Implement more local events for all ages including: movie nights, flower show, local markets, cultural events, sporting tournaments and live music concerts -Form partnerships with groups hosting activities in Shepparton and promote our neighbourhood as a location	-SGRNPC -Shepparton Show Me -Council -Grant bodies (Council, State, National)	2017/2018 High	-St Georges Road Community Drive In took place in April 2017 with provision to establish as an annual event.	Economic, Social
Celebrate the unique character of our shopping precincts	-Install cultural welcome signage at entrance to shopping precincts/neighbourhood -Create identity as cultural neighbourhood (eg. Dandenong) -Cultural Mooving Art Cow in area -Decorate main streets/precincts as per unique character eg. flags, murals, cultural symbols and signs	-SGRNPC -Council	2016/2017 High	-Ideas included in SGR Precinct streetscape concept design for 17/18	Social
More public toilets in key public locations	-Install public toilets at Victory Park -Investigate public interest in other locations for public toilets -Advocate for inclusion into Council's Public Toilet Ten Year Plan	-SGRNPC -Council	2016/2017 High	- Continue to advocate through the public toilet masterplan	Built
Improve streetscape in shopping precincts	-Investigate options to improve permanent seating options in shopping precincts -More waste/recycling bins -Improve local property maintenance -Better street lighting -More regular street sweeping	-SGRNPC -Council -State level funding bodies	2016/2017 High	- streetscape redevelopment to commence in November 2017 to address lighting, seating	Built
More activities for young people are held in the area	-Partner with other organisations to provide activities and events for young people in the area including sport, music, art and cultural activities	-SGRNPC -Word of Mouth -Victoria Police -Local Schools/education facilities	High	- Identifying more opportunities	Social
More women's exercise or activity opportunities	-Investigate funding and partnership opportunities with other organisations to offer safe and culturally appropriate activities for women to promote health and wellbeing (eg. cooking, language self-defense, swimming, gym, yoga, cricket, soccer)	-SGRNPC -Ethnic Council	Medium	Not completed – advocacy to be included in the Activities in the Park Program 18/19	Social, Advocacy

Assist multicultural communities to find funding to support sport participation, local and national	-Identify funding opportunities to help community members fundraise to compete -Investigate grant writing training opportunities -Investigate fundraising opportunities for teams to fund competition -Find ways to ensure information regarding opportunities is communicated with communities, eg. noticeboard or social media	-SGRNPC -Council	Low	Not completed	Advocacy
Create local social "hub"	-Identify location or alternate facility to conduct proposed hub programs -Identify community preferences for programs such as Men's Shed, Community Cooking Classes, Soup Kitchen, Single Parenting Group, Coffee Club, First Aid Training,	-Council -SGRNPC	Low	Not completed	Social/Built
Improve vegetation in streetscape (including shopping precincts)	-Work with Council to plant more trees in area and improve visual amenity of current trees -Investigate climate appropriate species to beautify roundabout -Plant boxes with food/flowers in shopping precincts and public parks -Identify problem trees covering signs (eg. Shopping plaza across from playground)	-SGRNPC -Council	High	-Included in streetscape design	Natural
Improve local underutilised parks to increase public use	-Plant more climate appropriate flower gardens to add visual amenity - Increase number of seats in public areas eg. bus stops, Victory Park, smaller parks -Improve shade options in parks -Install creative play spaces for young people	-SGRNPC -Council	High	Not completed	Natural, Social
Improve Karibok Park for regular community use	-Investigate community preferences for use of open space (including casual sport, gardens, children's play areas etc) -Investigate ways to bring more colour to area eg. murals -Investigate funding options for improvements	-SGRNPC -Council	Medium	Not completed	Natural
Support more local native species in area	-Liaise with Council to plant more native trees in parks and on verges -Identify appropriate locations for bird boxes to support native bird population	-SGRNPC -Council -Shepparton Mooroopna Urban Landcare	Low	Not completed	Natural
Create a green walkway along verge near railway line to link	-Investigate community aspirations for green walkway from station to lake	-SGRNPC -Council	Low	Not completed	Natural

area to lake	-Discuss options with Council for developing park/walkway on land				
Increase customer base in area	-Improve promotion of businesses to broader area -Cross promotion of precincts -Implement multi-language signage to inform all populations of products available -Investigate options to provide free wifi in street	-SGRNPC -Local business owners -Council -Shepparton Show Me	High	Not completed	Economic
Improve business management skills of business owners	-Conduct training and development support for local business owners	-SGRNPC -Council	High	Not completed	Economic
Increase businesses in area	-Identify locations or development for more commercial premises in area -Promote benefits of business in area	-SGRNPC -Council	Low	Not completed	Economic
Improve car parking	-Investigate options to improve car parking around St George's Road shopping precinct and Primary School (eg. St Andrew's park converted to car parking or vacant block near Victory Park or at Victory Park, or centre road parking) -Advocate for increased presence of parking inspectors	-SGRNPC -Council	High	-Included as part of streetscape concept plan for funding. Awaiting outcome. -Parking inspectors visit area regularly with current resource constraints	Built, Advocacy
Create more skate and scooter facilities	Investigate options for improved access to skate and scooter features in area	-SGRNPC -Council	Medium	Not completed	Built
Better availability of water in local parks	-Establish the most required areas for drinking fountains -Install drinking fountains in most popularly required public places	-SGRNPC -Council	Low	-Drinking fountain installed in Furphy Park (McIntosh St) -Others to be identified	Built
Upgrade St Andrew's tennis courts	-Identify need for upgrade -Identify funding methods	-SGRNPC -Council	Low	Not completed	Built
Improve traffic and pedestrian safety near St George's Road precinct	-Commence discussion with Council's Traffic Engineer to look at safety options, including: <ul style="list-style-type: none"> <li>• Reducing speed limit</li> <li>• improve safety at roundabout</li> <li>• A zebra crossing</li> <li>• Speed bumps or re-alignments</li> </ul>	-SGRNPC -Council	Low	Not completed	Built
Improve women's access to swimming facilities	-Advocate for women's session at pool -Advocate for future women's only pool	-SGRNPC -Ethnic Council -Council	High	Not completed	Advocacy
Improve safety and visual impact of degraded houses in St George's Road	-Identify relevant properties and report through Council -Advocate for property owner to improve property	-SGRNPC -Council	Medium	Underway -House in shopping precinct has been demolished -Others to be identified	Advocacy

Increase public transport availability	Advocate for with relevant authorities for improved weekend public transport to places of worship and the Kialla bus route, and more trains to Melbourne	-SGRNPC -Council -Public Transport Victoria	Low	Not completed	Advocacy
More university campuses in Shepparton	Advocate for more regional campuses for Universities	-SGRNPC -Council	Low	Not completed	Advocacy
More affordable community bus rental	-Investigate options for funding or partnerships to improve affordability or bus rental for community groups	-SGRNPC	Low	Not completed	Advocacy
Improve job availability for young people	-Advocate for business owners to hire local young people -Advocate for improved job skills training for young people -Advocate for volunteer programs for young people to enhance skills	-SGRNPC -Council	Low	Not completed	Advocacy
Improve roads and footpaths	-Identify areas for improvement of road and footpaths (eg. Wilmot Road) -Advocate to relevant road owner	-SGRNPC -Council -VicRoads	Low	Not completed	Advocacy
Develop a walking bridge over railway line at station	-Identify community aspiration -Advocate for changes through relevant owners/funding bodies -Work with Council to develop a Masterplan	-SGRNPC -Council	Low	Not completed -Some work is underway to develop a Railway Station masterplan. Members of Committee engaged in this process.	Advocacy
Advocate for local support for cultural multi-sport tournament to be held in Shepparton	-Work with multicultural communities to establish interest -Work with Council to promote benefits of event -Advocate for funding for sporting events -Investigate and build relationships with partner organisations	-SGRNPC -Council -Ethnic Council	Low	Not completed	Advocacy
Address flooding of streets in periods of significant rain	-Identify problem locations -Liaise with relevant Council departments to secure funding	-SGRNPC -Council	Low	-Have had some conversations with Project Department about retardation basin in area and Weddell St upgrade	Advocacy

## Tallygaroopna Community Plan Action Plan 2017

Goal	Actions	Partnerships	Timeframes	Status	Strategic Goals (i.e Council pillar)
Walking/Cycling track	<ul style="list-style-type: none"> <li>Finish Stage 1 of Walking Track</li> <li>Develop proposal for extension of the track and a proposed route</li> <li>Explore signage options for natural and historical sites of significance</li> </ul>	<ul style="list-style-type: none"> <li>Community</li> <li>Recreation reserve committee</li> <li>Congupna and Tallygaroopna Landcare</li> <li>Cycling Victoria</li> <li>Funding bodies</li> <li>GSCC</li> </ul>	2017/2018 2018/2019	<ul style="list-style-type: none"> <li>-Capital budget bid successful in 2016/17 budget to complete first stage of track</li> <li>- First stage to be completed 2017.</li> <li>-Committee advocating for next stages (2018/19 budget)</li> </ul>	Built
Community Notice Board	<ul style="list-style-type: none"> <li>Develop design concept</li> <li>Location options explored</li> <li>Produce a community directory to place on the notice board annually</li> </ul>	<ul style="list-style-type: none"> <li>Community</li> <li>Funding bodies</li> <li>GSCC</li> </ul>	2017/18	<ul style="list-style-type: none"> <li>-Preferred site chosen (near old CFA shed)</li> <li>-Committee investigating signage types and sourcing quotes.</li> </ul>	Built
Improved school road safety (signage, lights, traffic calming device)	<ul style="list-style-type: none"> <li>Liaise with GSCC to determine possible solutions to slow/alert fast moving traffic</li> <li>Investigate funding options for implementation</li> </ul>	<ul style="list-style-type: none"> <li>Community</li> <li>GSCC</li> <li>Vic Roads</li> </ul>	2017/18	<ul style="list-style-type: none"> <li>-Meeting held with GSCC</li> <li>-Implementation to occur (rumble strips on east entry to Tallygaroopna, speed trailer)</li> </ul>	Built
Improved Drainage for the township	<ul style="list-style-type: none"> <li>Communication of current plans and actions to date and for future plans</li> <li>Develop partnership approach with council maintenance program to enable the use of local knowledge to inform the program</li> </ul>	<ul style="list-style-type: none"> <li>GSCC</li> <li>Tallygaroopna Flood Recovery planning Committee</li> </ul>	2016 - ongoing	<ul style="list-style-type: none"> <li>-Flood mitigation design work completed – works being completed as budget allows.</li> </ul>	Built
Community events for locals	<ul style="list-style-type: none"> <li>Calendar of existing community events</li> <li>Approach community groups to host an event eg</li> <li>School holiday activities</li> <li>Community BBQ</li> <li>High tea in the hall</li> </ul>	<ul style="list-style-type: none"> <li>Local community groups</li> <li>GSCC</li> <li>School Parents Association</li> <li>Visitor Information Centre</li> </ul>	Ongoing	<ul style="list-style-type: none"> <li>-Food swap</li> <li>-Garage sale</li> <li>-Movie nights</li> <li>-Cricket Club Christmas Party</li> <li>-Old Time Dances</li> </ul>	Social

Recreation Reserve upgrades	<ul style="list-style-type: none"> <li>Installation of power upgrade to the facility to allow installation of</li> <li>Air conditioning</li> <li>Kitchen upgrade</li> </ul>	<ul style="list-style-type: none"> <li>GSCC</li> <li>Recreation reserve committee</li> </ul>	2017/2018	-Power consolidation work to be undertaken (2017)	Built
Improvements to town infrastructure	<ul style="list-style-type: none"> <li>Explore options to provide connections to natural gas and sewage</li> </ul>	<ul style="list-style-type: none"> <li>GSCC</li> <li>APA Group Natural Gas</li> <li>Goulburn Valley Water</li> <li>Community</li> </ul>			Advocacy
Street upgrades	<ul style="list-style-type: none"> <li>Undertake street lighting audit</li> <li>Identify priority locations for additional street lighting</li> <li>Liaise with councils works department to ensure inclusion in the works program</li> </ul>	<ul style="list-style-type: none"> <li>GSCC</li> <li>Community</li> </ul>			Built
Recognition of volunteers	<ul style="list-style-type: none"> <li>No specific actions yet identified</li> </ul>	<ul style="list-style-type: none"> <li>Community</li> <li>Service / Community Groups</li> <li>GSCC</li> </ul>			Social
Community events to attract visitors	<ul style="list-style-type: none"> <li>Explore options with Councils Arts, Events and Tourism department</li> <li>Fun run</li> <li>Music festival</li> <li>The great Tally bike race</li> <li>Establish a committee to develop the concept</li> </ul>	<ul style="list-style-type: none"> <li>GSCC</li> <li>Funding bodies</li> </ul>		-Successful garage sale held 2015. Happened again in 2016.	Social
Recreation and Fitness activities	<ul style="list-style-type: none"> <li>Identify activity options currently available through council's active living program</li> <li>Canvas community support for available options such as: exercise group / walking group</li> <li>Fitness activities in the park</li> </ul>	<ul style="list-style-type: none"> <li>GSCC</li> <li>Community</li> </ul>		-2015-Activities in the Park occurring.	Social
Planning for town growth - rural and urban living zones and potential industry zones	<ul style="list-style-type: none"> <li>Identify key areas zoned for rural and urban living sub division with town planners</li> <li>Identify potential developers</li> <li>Canvas interest</li> </ul>	<ul style="list-style-type: none"> <li>GSCC</li> <li>Relevant district landowners</li> <li>Land developers</li> <li>Real Estate agencies</li> </ul>			Advocacy
Encourage business Development in the town	<ul style="list-style-type: none"> <li>Work with councils investment attraction department to develop a promotion strategy to attract business relocation or start up to the town</li> </ul>	<ul style="list-style-type: none"> <li>GSCC</li> <li>Businesses</li> </ul>			Economic

Maintain support services and activities for early childhood	<ul style="list-style-type: none"> <li>• Work with council to develop promotion material and a promotion strategy for the current services</li> </ul>	<ul style="list-style-type: none"> <li>• GSCC</li> <li>• Tallygaroopna Primary School</li> <li>• Tallygaroopna preschool</li> </ul>			Social
Bus Transport terminal	<ul style="list-style-type: none"> <li>• Investigate possibilities to obtain land from Graincorp</li> <li>• Liaise with GSCC, State and Federal Governments to explore funding</li> <li>• Work with bus lines</li> </ul>	<ul style="list-style-type: none"> <li>• Community</li> <li>• GSCC</li> <li>• State Government</li> <li>• Federal Government</li> <li>• Bus lines</li> </ul>	2015/2016	<ul style="list-style-type: none"> <li>-Meeting held with Greg Barr – Nationals.</li> <li>-Ownership of land identified</li> <li>-PTV/VLine contact initiated</li> </ul>	Advocacy
Support services and activities for older people in town	<ul style="list-style-type: none"> <li>• Work with Councils Home and Community care program to explore options for transport for health services and options for activities based programs in the town</li> </ul>	<ul style="list-style-type: none"> <li>• GSCC</li> <li>• Community</li> </ul>		Project on hold	Social



## Tatura Community Plan Action Plan

Goal	Actions	Status	Timeframe	Partnerships	Strategic Goal Council Plan
<b>Mactier Park</b> <i>Enhancement of pristine park and recreation facilities, improved road and Skate Park safety and revitalisation of business district</i>	Continue to advocate for the implementation of the Master Plan actions. TCP to maintain regular contact with VicTrack and Greater Shepparton City Council regarding the monitoring of the contaminated land. If the contamination is rectified then progress the implementation of the Master Plan.	Ongoing Community consultation completed as part of the preparation of the Master Plan <b>Meeting with VicTrack and Council 28/8/17</b>		Tatura Community Plan Committee(TCPC) Greater Shepparton City Council (GSCC) Tatura Milk Industries (TMI) Funding Bodies	Advocacy Built Social
	Trees in Flanagan Place	Ongoing 3 trees have been relocated. Removal of remaining trees and replanting will be staged over the next 2 years.			
<b>Tatura Museum</b>	Support the Tatura Museum to source funding and support for the extension to the Museum.	Commenced \$10,000 brought forward to finalise planning after a Budget submission to Council. Project Manager appointed. Museum has several new volunteers	2018/2019	Tatura Museum TCPC GSCC Funding Bodies	Built
	Promote volunteer opportunities at the Museum through Community Plan networks				
<b>Lake Bartlett</b> <i>Master Plan Adopted</i>	Extend the pond/open water behind the Italian social club to meet Lake Bartlett.	Not commenced <b>Budget Bid 2018/2019 (PS&amp;R)</b>	2018/2019	TCPC GSCC	Built Natural
	Interpretive Signage	Master Plan Action Sept 2017 Not commenced <b>Operational 2017/2018</b>	2017/2018	Funding Bodies Sporting Clubs Tatura Primary School	
	Improve Charlie Taylor Park including new paths, improved irrigated lawns, renovation of existing shelter, removal of fire pit and plastic firework, new picnic/park shelter. Repair and maintain Bollards	Commenced <b>New BBQ plate installed</b> <b>Maintenance of shelter completed 2016.</b>	2017/2018		
	Install access all abilities vandal resistant public toilets in Charlie Taylor park.	Not commenced <b>Included in Public Toilet Plan.</b> <b>Budget bid submitted</b>			

Goal	Actions	Status	Timeframe	Partnerships	Strategic Goal Council Plan
	Install paths and bridge midway along the southern section of creek joining the rear of the Italian Social Club with the Junior Oval precinct and continuing to the TCAC to provide improved access between sports areas and Martin Street area.	Not commenced			
	Design and construct new wetland in southern area of site including paths and water circulation pumps to circulate water through whole system from O'Reilly Road.	Not commenced			
<b>Cycling and Walking Tracks</b>	Walks and Rides Committee will continue to advocate for cycling and walking tracks in Tatura focusing on the 10km Loop of Tatura including exercise stations. <ul style="list-style-type: none"> <li>Stage One - Dhurringile Road shared path 2017/2018 (4)</li> <li>Connector Path from Cussen Park to Northlinks entrance (15)</li> <li>Cussen Park to Edgar Street – Ross Street (12)</li> <li>Dhurringile Road rail crossing: missing link in Crouching Emu path (6)</li> </ul>	Ongoing Dhurringile Road section of 10 km loop funded for delivery in 2017/18	2017/2018	TCPC GSCC Tatura Walks and Rides Committee Tatura Lions Club Tatura Rotary Club Community Tatura 200	Built Advocacy
	Investigate a safe crossing for school students/residents across Ross Street (from the Joe Ford Drive precinct to encourage walking to school) (10)	New Action Sept 2017 Not commenced	2018/2019		
	Ramps down to street level: south-western corner Albert and Kerferd Streets, western and eastern corner Hogan and Gowrie and other footpaths as identified.	Ongoing			
<b>Public Transport</b>	Establish working group to investigate current services and alternative opportunities to meet Tatura's transport needs for travel to Shepparton and Melbourne.	Not commenced	2016/2017	TCPC GSCC Community Accessibility Community Stakeholders	Social Economic
	Attract funding to improve transport options. Investigate funding options for a Community Car to be located in Tatura.	Ongoing An Access Spot has been funded to be installed in 2017.			
<b>Library</b>	Investigate the improvement of Library facilities in Tatura.	Commenced Concept has been developed for a funding application through the Living Library Grant	2018/2019	TCPC GSCC GVRLC Tatura Children's	Built Social
	Consider relocation due to growth in Childcare in Tatura				

Goal	Actions	Status	Timeframe	Partnerships	Strategic Goal Council Plan
		due May 2018. Broader consultation to occur.		Centre TCH Maternal Child Health	
<b>Business and Community</b>	Facilitate an annual gathering of local Business and the Tatura Community Plan Group in partnership with the GSCC Economic Development Project Officer.	Commenced – Annual Event Business Breakfast held in May 2017. Opportunity to set up Working Group if there is interest from the Business community.	Annually	TCPC Local businesses GSCC – Economic Development	Economic Social
	In partnership with local Business develop a Shop Local campaign eg Try Tat for That!	Not commenced			
<b>Community Communication</b>	Notice Boards in Central locations eg Stuart Mock Place, Tatura Park and the Museum	Commenced		TCPC GSCC Guardian Bulletin Local Business Tatura Park Economic Development, Tourism & Major Events Strategies	Social Economic Built
	Investigate options for digital communication methods for the delivery of community information in Tatura. Undertake discussion with Tatura Park Committee re a joint project involving a remote accessed information screen.	Commenced			
	Provide timely information to the community on the progress of the ideas provided to the TCP during the Review and ongoing conversations.	Ongoing	Ongoing		
<b>Community Safety</b>	Initiate a Forum with Police Annually.	New Action Sept 2017 Not commenced Changes to Policing in Tatura have been relayed through a Forum and Inspector Hayden Downs attendance at TCP meeting. TCP reps. met with the Minister and Susanna Sheed.	Annually	TCPC GSCC Local Police Community stakeholders	Advocacy
	Advocate for the installation of security cameras in Hogan Street, Tatura Park and other parks to reduce vandalism	Not commenced			
<b>Cussen Park</b>	Support the implementation of the Cussen Park Management Plan	Ongoing	Ongoing	TCPC	Natural

Goal	Actions	Status	Timeframe	Partnerships	Strategic Goal Council Plan
				GSCC – Cussen Park Management Committee Community Stakeholders	Social
<b>Newcomers</b>	In consultation with newcomers investigate; develop and implement a Welcome Newcomers to Tatura program eg Welcome kit, Facebook page and informal gatherings.	Commenced	2017/2018	TCPC Community organisations TCH	Social
	Engage with residents in the new estates eg Northlinks	New Action Sept 2017		Local Business	
<b>Playgrounds</b>  Playgrounds cont.	Investigate means of providing shade in the Northlinks Playground.	Not commenced Capital bid 2018/2019. Also seeking alternative funding - Community Shade Grant		TCPC GSCC Residents	Built Social
	Advocate for a Playground in Joe Ford Drive.	Commenced Residents meeting with GSCC Rec and Parks. Concept plan commenced. \$60,000 approved in Council budget for Playground 17/18	2017/2018		
<b>Public Access to Commercial area</b>	Upgrade car parks at rear of Hogan Street shops through lighting and levelling out of ground.	Not commenced		TCPC GSCC	Advocacy Built
	Install signs to direct people to car parks behind shops.	Not commenced			
	Create more user friendly walkways between Hogan Street and car parks.	Not commenced			
	Develop parking for buses and caravans between Tatura Hot Bread Bakery and the Museum.	Not commenced			
<b>Redevelopment</b>	Support the Convent Development Group to do a business plan and a feasibility study for a Health & Wellbeing Centre and Business Centre.	Not commenced		TCPC TCH	Built Social

Goal	Actions	Status	Timeframe	Partnerships	Strategic Goal Council Plan
<b>of the Convent</b>				Community Stakeholders GSCC Funding bodies	Economic
	Support for the monthly Community Markets at the St Mary's Hall (next to the Convent). Promote the monthly Markets through Community Plan networks.	Commenced			
<b>Sustainable Living</b>	Support Transition Tatura to prepare Energy Descent Plan	Ongoing		TCPC Transition Towns GV Community Energy Funding bodies	Natural
	Support community to develop a community owned a large scale Renewable Energy project	Ongoing			
	TCPC to work with Council's Urban Forestry Strategy team to develop an implementation plan for Tatura with regard to species selection, location and timeframes to maximise biodiversity, shading and aesthetics within the town	New Action Sept 2017 Not commenced			
	Support Transition Tatura - Community awareness activities regarding sustainability	Ongoing			
<b>Swimming Facilities</b>	Work in partnership with Council to investigate upgrade options for the Tatura Swimming Pool.	Pool Users Group meets with Council 3 times per year. Change Room upgrade completed. Pool painting 17/18.		TCPC GSCC Tatura Community House (TCH) Tatura Hospital Aquamoves Funding bodies	Social Built
	Encourage increased use of the pool through promotion and supporting activities at the Pool.	Activities in the Park have increased the use of the pool significantly.			
	Investigate the possibility of a weekly bus to the Hydro pool in Shepparton.	Not commenced			
<b>Tatura Civic Halls</b>	Support the Tatura Civic Halls Committee of Management Inc to revitalise the Tatura Civic Hall complex and secure funding to ensure sustainability into the future.	Ongoing Representative on the TCP Committee. Victory Hall Committee have successfully gained funding from several sources to go toward continuous improvements at		TCPC Funding bodies The Tatura Civic Halls Committee	Built

Goal	Actions	Status	Timeframe	Partnerships	Strategic Goal Council Plan
		the Halls.			
<b>Tatura Sports, Events &amp; Community Precinct Plan</b>	Support the implementation of the Tatura Sports, Events & Community Precinct Plan. Currently in draft.	Commenced Ongoing		TCPC GSCC Tatura Park Community Stakeholders	Social Built Natural Economic
<b>The Haven</b>	Support in principle The Haven - Tatura project to establish long term supported accommodation for local people who are in the need of safe secure home to help them recover from their mental illness.	New Action Sept 2017		The Haven Foundation TCPC TCH	Social Built
<b>Tourism</b>	Encourage the development of additional tourism attractions and events	Not commenced		TCPC GSCC Tatura Museum Tatura RSL	Economic
	Improve marketing of tourism attractions	Not commenced			
	Further develop Tatura as an integral part of a cultural heritage trail which includes other nearby towns such as Rushworth.	Not commenced			
	Advocate for an RV Rest Stop in Tatura	New Action Sept 2017 Commenced			
<b>Town Beautification</b>	Plant avenues of trees	Not commenced		TCPC GSCC Transition Tatura	Natural Social
	Instigate local community awards program	Not commenced			
	Develop a Tidy Towns Competition	Not commenced			
<b>Youth</b>	Provide representation on the Greater Shepparton City Council Ramp it Up Committee to progress the Youth SPOT in Tatura.	Not commenced Tatura has been allocated GSCC funds for the first SPOT 17/18		TCPC GSCC Community organisations	Social
	Investigate a Youth Events Crew to progress youth events and activities	Not commenced			
	Close the section of Walsh Street between Albert Street and the Casey Street roundabout as detailed in Mactier Park Master Plan for youth activities	New Action Sept 2017 Commence discussion with Council			

## Toolamba Community Plan Action Plan 2017

Goal	Actions	Partnerships	Timeframe	Status	Strategic Goals (i.e Council pillar)
Redevelopment of the recreation reserve, including: -Fitness stations -Supporting the development of the Cricket Club -Youth space -Improved drainage -Tennis court redevelopment	-Recreation Reserve committee to acquire designs for development of the community centre	<ul style="list-style-type: none"> <li>Recreation Reserve committee</li> <li>GSCC</li> <li>Funding bodies</li> </ul>	2017/18+	-Masterplan completed -Cricket Club secured funding (17/18) to renovate nets.	Built
Construction of a playground at Colaura Gardens	-Liaise with Parks and Recreation/Building/Planning to establish requirements and ideal location -Submit EOI -Source any required funding	<ul style="list-style-type: none"> <li>Community</li> <li>GSCC</li> </ul>	2017/18 (design) 2018/19 (Implementation)	2017/18 Survey released to community to scope preferred playground styles. This will guide capital budget bud for 18/19.	Social
Walking tracks throughout Toolamba, incorporating a picnic area at the boat ramp	-Establish preferred track locations -Submit EOI to Council -Capital Budget Bid to be submitted for construction -Source funding partners	<ul style="list-style-type: none"> <li>Community</li> <li>GSCC</li> <li>Funding bodies</li> <li>Vic Roads</li> </ul>	2017/18 (concept and feasibility) 2018/19 Begin implementation	2015/2016 Conceptual designs for 2 walking tracks. <ul style="list-style-type: none"> <li>Rutherford Rd – Bitcon Rd – Old Toolamba</li> <li>River frontage from Wren St to Old Toolamba (EOI to be submitted)</li> </ul>	Social
Implementation of a school crossing	-Liaise with Traffic Dept at GSCC to establish the suitable crossing area and any other requirements -Source any required funding	<ul style="list-style-type: none"> <li>Community</li> <li>GSCC</li> <li>Vic Roads</li> </ul>	2017/18	Committee and school continuing to advocate to Council for school crossing.	Built
Improvement of the kerb / channel / guttering	-Submit capital budget bid to implement works -Stage 1: McNamara to Railway line -Stage 2: Railway line continuing West	<ul style="list-style-type: none"> <li>Community</li> <li>GSCC</li> </ul>	2017/18	Budget received for design work – 2017/18.	Built
Provide a range of activities for the community such as: <ul style="list-style-type: none"> <li>pop up café</li> <li>“meet and greet newcomer” nights</li> <li>Welcome pack for new</li> </ul>	-Establish community events working group to investigate possible events -Establish events calendar -Source partnerships to help facilitate events -Source funding opportunities	<ul style="list-style-type: none"> <li>Community</li> <li>Recreation Reserve Committee</li> <li>GSCC</li> </ul>		Event planning underway for 2016/2017	Social

<ul style="list-style-type: none"> <li>residents</li> <li>• Fun run through Daunt's Bend</li> <li>• Christmas party</li> </ul>					
Continue to encourage environmental practises such as tree planting, protection of flora / fauna and improved use of town storm waste to develop wetlands, and advocate for increased maintenance / grading of tracks and weed control at Daunts Bend	<ul style="list-style-type: none"> <li>-Establish area in which trees need to be planted</li> <li>-Liaise with Parks Victoria and GSCC to formulate a planting plan</li> <li>-Liaise with Parks and Recreation to identify any free plant opportunities</li> <li>-Source funding opportunities</li> <li>-Continue to liaise with Council maintenance teams to keep weed control and grading current</li> <li>-Council could provide environment education to school</li> </ul>	<ul style="list-style-type: none"> <li>• Community</li> <li>• Parks Victoria</li> <li>• GSCC</li> </ul>		2012 - Contact was made with Parks Victoria - concern was expressed with the lack of progress	Social / Natural
Development and support for heritage and history activities of the Toolamba district, including plaques and historical events	<ul style="list-style-type: none"> <li>-Establish working group</li> <li>-Investigate possible historical activities/projects</li> <li>-Submit EOI/Project proposal for each identified project</li> <li>-Source funding/project partners</li> </ul>	<ul style="list-style-type: none"> <li>• Community</li> <li>• GSCC</li> <li>• Vic Track</li> <li>• Parks</li> </ul>		-History sign in Toolamba constructed	Social / Built
Public transport connection improvements	-Advocate to Shepp Transit and VLine for improved services to the area	<ul style="list-style-type: none"> <li>• Community</li> <li>• GSCC</li> </ul>		Not commenced	Social/Advocacy
Planting of a community garden	<ul style="list-style-type: none"> <li>-Establish suitable location</li> <li>-Liaise with other community garden groups in the area</li> <li>-Source materials and any required funding (i.e. Council Sustainability Grant up to \$1000)</li> </ul>	<ul style="list-style-type: none"> <li>• Community</li> <li>• GSCC</li> </ul>		Not commenced	Social
Create a community area in Old Toolamba	-Establish a working group of Old Toolamba residents to identify area and type of facility required	<ul style="list-style-type: none"> <li>• Community</li> <li>• GSCC</li> </ul>		Not commenced	Social
Development of town footpaths	-Advocate for inclusion in to GSCC's Missing Links Footpath Program	<ul style="list-style-type: none"> <li>• Community</li> <li>• GSCC</li> </ul>		-Toolamba included in Council's Missing Links program	Built
Upgrading and redevelopment of the railway reserve	<ul style="list-style-type: none"> <li>-Submit EOI with concept design for the reserve</li> <li>-Acquire permission to use the land and relevant lease from Vic Track</li> <li>-Source funding/project partners</li> </ul>	<ul style="list-style-type: none"> <li>• GSCC</li> <li>• Community</li> <li>• Vic Track</li> </ul>		<ul style="list-style-type: none"> <li>-Conceptual design for outdoor history display submitted</li> <li>-Contact made with VicTrack in regards to land lease for historical display</li> </ul>	Built
Advocate for natural gas extensions	-Advocate to relevant authorities to include Toolamba in gas extension works	<ul style="list-style-type: none"> <li>• Community</li> <li>• Gas companies</li> </ul>		Not commenced	Economic/Advocacy
Consider the impact of the new bypass being located to the west	<ul style="list-style-type: none"> <li>-Continue to liaise with Vic Roads and GSCC</li> <li>-Update wider community on any project</li> </ul>	<ul style="list-style-type: none"> <li>• Community</li> <li>• Vic Roads</li> </ul>		Not commenced	Social



of Toolamba	developments				
Advocate for sewerage	-Continue to advocate to GV Water for inclusion in future sewerage extensions	<ul style="list-style-type: none"> <li>Community</li> <li>GV Water</li> </ul>		Not commenced	Built/Advocacy
Construction of a war memorial	<ul style="list-style-type: none"> <li>-Establish a working group</li> <li>-Identify ideal location for the memorial</li> <li>-Partner with surrounding services clubs for support and project guidance</li> <li>-Source any required funding</li> </ul>	<ul style="list-style-type: none"> <li>Community</li> <li>RSL</li> <li>GSCC</li> </ul>		Not commenced	Built
Promotion of the town's businesses within the region/encourage people to shop locally	<ul style="list-style-type: none"> <li>-Establish a working group</li> <li>-Investigate all available channels of promotion</li> <li>-Liaise with Council's Investment Attraction Team</li> <li>-Source any required funding</li> </ul>	<ul style="list-style-type: none"> <li>Community</li> </ul>		Not commenced	Economic
Support development of community space or private enterprise venture for a coffee shop/supermarket	-Investigate potential businesses that would be interested in opening a café	<ul style="list-style-type: none"> <li>Community</li> <li>Businesses</li> <li>GSCC</li> </ul>		Local resident investigating options	Economic/Advocacy
Investigate future use of Daunts Bend including caravan / camping facilities, walking/cycling tracks by improving the maps, signage and paths infrastructure	-Establish a working group to investigate a course of action for this goal	<ul style="list-style-type: none"> <li>Community</li> <li>Parks Victoria</li> <li>GSCC</li> </ul>		Not commenced	Social / Natural
Support the development of residential housing	-Liaise with any relevant developers	<ul style="list-style-type: none"> <li>Community</li> <li>GSCC</li> <li>Developer</li> <li>GV Water</li> </ul>		Research work continues on future development	Built / Social
Preparing a feasibility study to support the establishment of a caravan park within Toolamba	<ul style="list-style-type: none"> <li>-Establish a working group for this project</li> <li>-Determine potential locations for a caravan/RV park</li> <li>-Source funding opportunities for a feasibility report</li> </ul>	<ul style="list-style-type: none"> <li>Community</li> <li>GSCC</li> </ul>		Not commenced – On hold	Economic
Development of a community noticeboard	<ul style="list-style-type: none"> <li>-Establish preferred location in town</li> <li>-Liaise with GSCC Planning/Building to determine any requirements</li> <li>-Source funding opportunities</li> </ul>	<ul style="list-style-type: none"> <li>Community</li> <li>GSCC</li> </ul>		Not commenced	Social
Facilitation of community courses (i.e. woodworking, craft)	<ul style="list-style-type: none"> <li>-Investigate potential facilitators</li> <li>-Secure venue</li> <li>-Source any required funding/materials</li> </ul>	<ul style="list-style-type: none"> <li>Community</li> <li>Hobby groups</li> </ul>		Not commenced	Social
Better promotion of our area's natural assets	<ul style="list-style-type: none"> <li>-Establish a working group to create promotional ideas and avenues</li> <li>-Council Sustainability Grants available</li> </ul>	<ul style="list-style-type: none"> <li>Community</li> </ul>		Not commenced	Environment

## Undera Community Plan Action Plan 2017

Goal	Actions	Partnerships	Timeframes	Status	Strategic Goals
Community Activities  <i>Development of community events to increase community participation and connectivity in all age groups</i>	<ul style="list-style-type: none"> <li>Car boot sales – produce, old wares, fruit, meat and hay</li> <li>Christmas party</li> <li>More activities for young people – discos, live music, blue light disco at least once per year</li> <li>More involvement from more people (encourage committee participation)</li> </ul>	<ul style="list-style-type: none"> <li>Undera Community Development Group (UCDG)</li> <li>Greater Shepparton City Council (GSCC)</li> <li>Undera Businesses</li> <li>Mooroopna Blue Light Disco Committee</li> <li>Media Outlets</li> <li>Undera Recreation Reserve COM</li> <li>Undera Recreation Reserve User Groups</li> </ul>	2017/18	-Planning for 2018 events underway	Social
Landscaping Maintenance  <i>Identify and scope actions to support the development and maintenance of the natural environment</i>	<ul style="list-style-type: none"> <li>More tree planting in the township and better maintenance of existing trees – particularly indigenous plantings to encourage wildlife</li> <li>Removal of ‘pest’ trees, weeds and Bindiis</li> <li>Improved roadside reserves – more regular slashing, tree planting</li> <li>Better maintenance of tracks leading to the river to improve access e.g. McCoy’s Bridge</li> </ul>	<ul style="list-style-type: none"> <li>UCDG</li> <li>GSCC</li> <li>Landcare</li> <li>Vic Roads</li> <li>Parks Victoria</li> </ul>	2017/2018	-Peppercorns removed from front of Recreation Reserve. -Investigating removal of additional Peppercorns in other areas.	Natural
Trails  <i>Development / mapping of various walking, cycling and horse riding trails including Mooroopna to Undera</i>	<ul style="list-style-type: none"> <li>Walking / cycling path to Shepparton, Mooroopna or Echuca. Extend roadside shoulder from Starrit Rd to Undera township on Echuca Road</li> <li>Improvements to the roads (e.g. fix up pot holes on Wheller Road; seal main dirt roads; seal the bus route along Fidge Rd, O’Brien Rd and Sleeth Rd)</li> </ul>	<ul style="list-style-type: none"> <li>UCDG</li> <li>GSCC</li> <li>Vic Roads</li> <li>Funding bodies</li> </ul>	2017/2018		Built

Children / Youth Spaces  <i>Investigate the formation of a committee to investigate children/youth spaces</i>	<ul style="list-style-type: none"> <li>Skate park</li> <li>Dirt track</li> <li>Local park with playground</li> <li>An occasional childcare centre and after school care</li> </ul>	<ul style="list-style-type: none"> <li>UCDG</li> <li>GSCC</li> <li>Youth Organisations in the municipality</li> <li>Goulburn Region Pre-School Association</li> <li>Undera Primary School</li> <li>Undera Recreation Reserve COM</li> </ul>	2017/2018	<ul style="list-style-type: none"> <li>-Membership on Ramp It Up Committee. Included in youth recreation space strategy.</li> <li>-Undera SPOT constructed (Stage 1). Stage 2 development underway.</li> </ul>	Built
<b>Newsletter</b>	<ul style="list-style-type: none"> <li>Town information – hard copy newsletter</li> </ul>	<ul style="list-style-type: none"> <li>UCDG</li> <li>Undera Primary School</li> <li>GSCC</li> </ul>		-Newsletter currently in circulation	Social
<b>Rubbish Removal</b>	<ul style="list-style-type: none"> <li>Develop rubbish bins next to the national park entrance to reduce the amount of rubbish dumped in the national park</li> <li>Develop a large recycling bins for cans</li> </ul>	<ul style="list-style-type: none"> <li>UCDG</li> <li>GSCC</li> <li>Parks Victoria</li> <li>Resource GV</li> </ul>			Natural/Advocacy
<b>Better mobile network coverage</b>	<ul style="list-style-type: none"> <li>Advocate development of a mobile phone tower and better mobile network coverage – preferably Telstra</li> </ul>	<ul style="list-style-type: none"> <li>Telstra</li> <li>UCDG</li> <li>GSCC</li> </ul>			Economic
<b>Population Growth</b>	<ul style="list-style-type: none"> <li>Advocate for connection of town water and sewerage to encourage growth and subdivision (advocacy)</li> </ul>	<ul style="list-style-type: none"> <li>GV Water</li> <li>GM Water</li> <li>UCDG</li> <li>State Member</li> </ul>			Economic
<b>Tourism opportunities</b>	<ul style="list-style-type: none"> <li>Develop signs to show how to access the river</li> <li>Investigate sewerage discharge point for caravans and BBQ area for travellers – possibly at the Recreation Reserve and turn it into an overnight stopping point</li> </ul>	<ul style="list-style-type: none"> <li>UCDG</li> <li>Parks Victoria</li> <li>EPA</li> <li>GSCC</li> <li>Media Outlets</li> </ul>			Economic
<b>Recreation Reserve Upgrade</b>	<ul style="list-style-type: none"> <li>Improved facilities for netball, tennis and football – improved pavilion with meeting facilities, disabled access, improved change facilities, toilets for netball, two new netball / tennis courts, improved toilet block, change</li> </ul>	<ul style="list-style-type: none"> <li>UCDG</li> <li>Undera Recreation Reserve COM</li> <li>Undera Recreation Reserve User Groups</li> <li>DEPI</li> <li>Funding Bodies</li> <li>GSCC</li> </ul>		<ul style="list-style-type: none"> <li>-New kitchen installed in Recreation Reserve – completed.</li> <li>-Sporting Future Grant secured for upgrade of toilet facilities in pavilion. Construction occurring 2016/17.</li> <li>-Masterplan completed</li> </ul>	Built

	facilities for female umpires, expansion of social room, construction of verandah across front of building, new bar area on west side of the function room.				
Streetscape <i>Develop a scope / proposal for beautification of the Undera Streetscape</i>	<ul style="list-style-type: none"> <li>Retain phone box</li> <li>Installation of bus shelters</li> </ul>	<ul style="list-style-type: none"> <li>UCDG</li> <li>GSCC</li> <li>Telstra</li> </ul>		-Phone box installed	Built
Amenities	<ul style="list-style-type: none"> <li>Upgrade toilets at speedway and develop an agreement so that they can be accessed during football games</li> </ul>	<ul style="list-style-type: none"> <li>UCDG</li> <li>GSCC</li> <li>DEPI</li> <li>Funding bodies</li> <li>Undera Recreation Reserve COM</li> <li>Undera Speedway</li> <li>Undera Football / Netball Club</li> </ul>		-Toilets upgrade completed	Built
History Museum	<ul style="list-style-type: none"> <li>History Museum or erection of information boards to recognise the people who shaped Undera's history – agriculturalists, soldiers, etc. This could occur around outside of existing hall and inside existing hall</li> </ul>	<ul style="list-style-type: none"> <li>Undera Memorial Hall COM</li> <li>UCDG</li> <li>GSCC</li> </ul>			Built
Town Hall	<ul style="list-style-type: none"> <li>Maintenance and preservation of town hall</li> <li>Sympathetic demolition of the town hall and restoration of the facade of the hall, maintaining as much local history in this structure as possible</li> <li>Complete demolition of the hall, whilst preserving some of the bricks to construct a soldier's memorial (cenotaph) for Anzac Day and Remembrance Day events – possibly near a potential</li> </ul>	<ul style="list-style-type: none"> <li>Undera Memorial Hall COM</li> <li>UCDG</li> <li>GSCC</li> <li>RSL</li> <li>Heritage Adviser</li> </ul>		Ongoing discussions with Hall Committee	Built

	travellers rest stop				
Aboriginal artwork	<ul style="list-style-type: none"> <li>Aboriginal artwork – need to discuss further details with elders</li> </ul>	<ul style="list-style-type: none"> <li>UCDG</li> <li>Rumbalara</li> </ul>			Social
Community Chest	<ul style="list-style-type: none"> <li>A local ‘community chest’ where funds are raised for community activities / improvements</li> </ul>	<ul style="list-style-type: none"> <li>UCDG</li> <li>Community Fund Goulburn Valley</li> </ul>		-Undera pub has implemented a community chest	Economic