

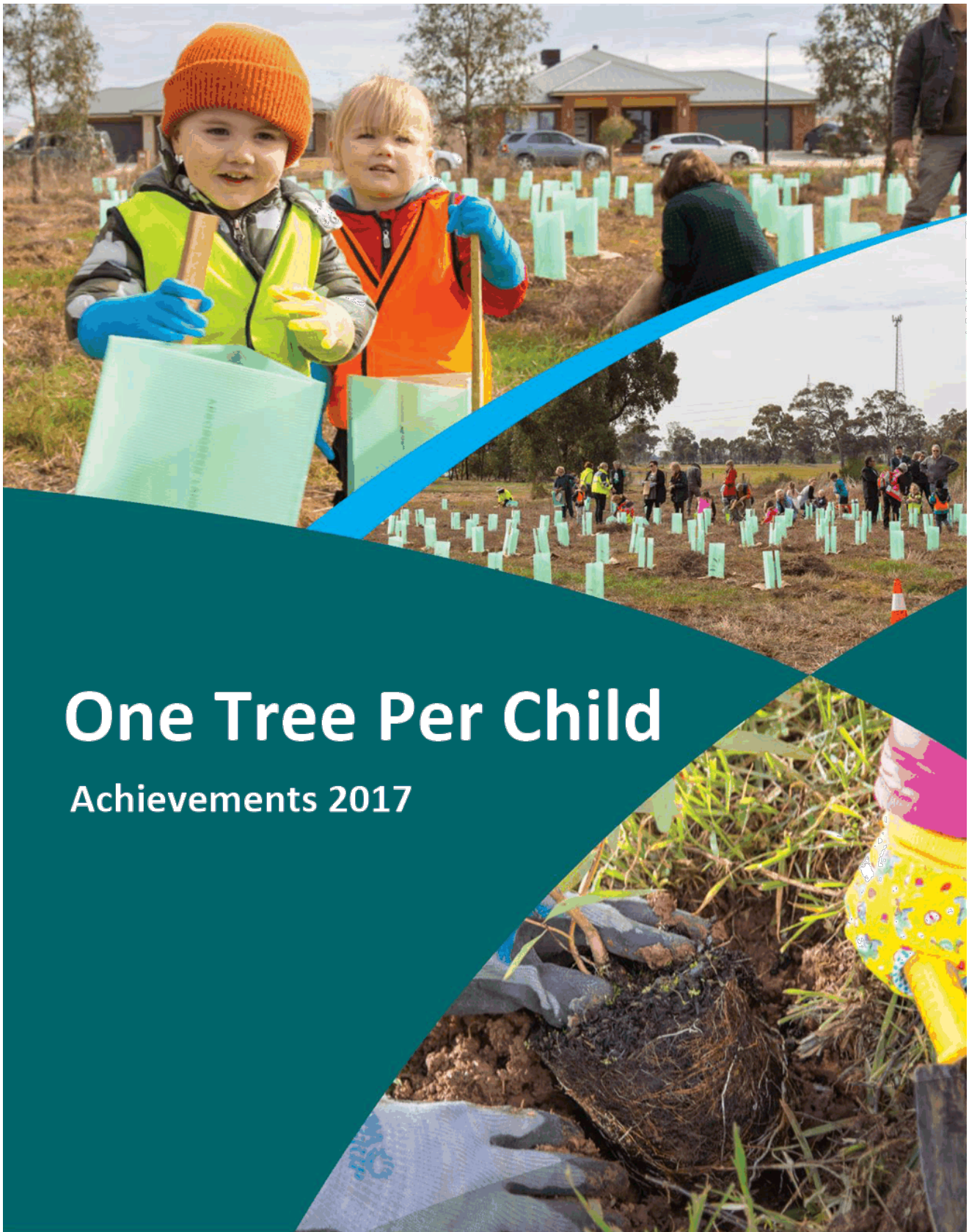
# **ATTACHMENT TO AGENDA ITEM**

**Ordinary Meeting**

**20 March 2018**

**Agenda Item 10.1      One Tree Per Child Project**

**Attachment 1            One Tree Per Child - Achievements 2017 ..... 379**



# One Tree Per Child

## Achievements 2017



### Background

In 2016, Council commenced its involvement with the “One Tree Per Child” initiative. This global initiative was founded by Olivia Newton-John and Jon Dee, who also founded the highly successful National Tree Day Program.

Council’s annual community tree planting program was subsequently expanded with the new aim of facilitating the planting of an indigenous plant for each person aged under 18 in our municipality. There are 16,664 residents aged under 18 living in the City of Greater Shepparton so the new target number was essentially a tripling of the number of indigenous plants planted per year under the old program.

### 2017 Results Summary

The One Tree Per Child Project exceeded its planting target of 16,664 plants in 2017 with 17,016 plants being planted by 2,771 participants across 44 planting sites.

**Table 1: Results summary**

Number of plants planted	Number of participants	Number of planting (49) or plant giveaway events (7)	Number of planting sites/locations
17,016	2,771	56	44

### Planting Events

A key component of Council's community planting program for the last ten years has been a weekend community tree planting event that occurs at a Council reserve on National Tree Day. In order to achieve the new target, a series of weekend events was arranged. Each of the six weekend events was organised at a different location to maximise the potential for new community members to be able to participate. A school holiday activity series was also initiated which involved four weekday planting events held at four different Council reserves (Table 2). A breakdown of all of the planting events is provided in Table 3 below.

**Table 2: Planting events**

	Sites	Participants	Plants
Weekend Planting Series	6	166	1238
School Holiday Program	4	120	836

**Table 3: Planting events and number of occasions**

Planting event	Number of Occasions
Community planting events	14
Community group partnered events	26
Primary School partnered events	14
Secondary School groups partnered events	4
Tertiary Institutions partnered events	1
Childcare centres/kindergartens) partnered events	10
Plant Giveaways (Kidsfest, Shepp Show etc.)	7

### Planting Sites

A total of 44 planting sites were revegetated, including twenty Council managed properties/reserves and eleven Council managed road reserves.

**Table 4: Planting locations**

Locations	Number
Council managed land (parks, reserves, property)	20
Council Managed Road Reserves	11
Public land - Non Council managed (Schools, Parks Victoria, GO TAFE, VicRail etc.)	11
Private Property	2
<b>TOTAL</b>	<b>44</b>

**Table 5: Council Managed Parks and Reserves**

Maintenance Responsibility	Number
Parks & Open Spaces, Sports Fields	6
Native Open Space	10
Sustainability & Environment	3
Council land - Childcare Centre	1
<b>TOTAL</b>	<b>20</b>

**Table 6: Revegetation sites - Council managed land**

Location	Responsible Department
McFarlane Rd Reserve, Mooroopna	Sustainability & Environment
Mooroopna Sandhills Reserve	Sustainability & Environment
Tassickers Reserve, Kittles Road Shepparton	Sustainability & Environment
Arcadia Recreation Reserve	Parks & Open Spaces, Sports Fields
Kialla West Recreation Reserve	Parks & Open Spaces, Sports Fields
Meteorite Park, Murchison	Parks & Open Spaces, Sports Fields
Undera Recreation Reserve	Parks & Open Spaces, Sports Fields
Wilma Crt Reserve, Mooroopna	Parks & Open Spaces, Sports Fields
Australian Botanic Gardens Shepparton	Native Open Space
Cussen Park, Tatura	Native Open Space
Kerang Avenue Wetland, Kialla Lakes	Native Open Space
Kialla West Cemetery	Native Open Space
Lake Bartlett, Tatura	Native Open Space
Lake Amaroo, Kialla Lakes	Native Open Space
Lake Louanna Waters Reserve	Native Open Space
Seven Creeks Reserve	Native Open Space
Tom Collins Drive, Shepparton	Native Open Space
Victoria Park Lake	Native Open Space
Murchison Pre-school	Council land - Childcare centre
Basin Road - Murchison North	Council Managed Road Reserve
Munro Road - Undera	Council Managed Road Reserve
Rathbone Road - Undera	Council Managed Road Reserve
Sleeth Road - Undera	Council Managed Road Reserve
Weller Road - Undera	Council Managed Road Reserve
Hutchison Road - Undera	Council Managed Road Reserve
Warren Road - Undera	Council Managed Road Reserve
Fidge Road - Undera	Council Managed Road Reserve
Neal Road - Undera	Council Managed Road Reserve
McIlroy Road - Undera	Council Managed Road Reserve
Norton Road - Undera	Council Managed Road Reserve



**Table 7: Revegetation sites - Non-Council managed land**

Tallygaroopna Primary School	Public land – School
Ardmona Primary School	Public land – School
Katandra West Primary School	Public land – School
Currawa Primary School	Public land – School
Tatura Primary School	Public land – School
Shepparton High School	Public land – School
GoTafe	Public land – Tertiary Institution
RiverConnect Reach - Parks Vic	Public land – Parks Victoria
Dookie Rail Trail	Public land - VicRail
Perdita St Rail Reserve, Dookie	Public land - VicRail
Dhurringile Prison	Public land -Prison
Shepparton Golf Club	Private Property
Barford Downs	Private Property

**Who was involved?**

Achieving the planting target was only going to occur by establishing partnerships with as many schools, kindergartens, childcare centres, Landcare and community groups as possible. A total of 43 different groups were involved.

**Table 8: Number of group types involved**

Group Type	Number
Primary Schools	11
Community Groups	10
Childcare Centres/Kinders	5
Council teams	4
Landcare Groups	3
Council Committees	3
Work crews	2
Community Planning Committees	2
Secondary Schools	2
Tertiary Institutions	1
<b>TOTAL</b>	<b>43</b>

Table 9: Groups involved

Group	Group Type
Cussen Park Advisory Committee	Council Committee
Kialla West Recreation Reserve Committee of Management	Council Committee
Arcadia Recreation Reserve Committee of Management	Council Committee
Kialla Lakes Residents Group	Community Planning Committee
Seven Creeks Neighbourhood Plan Committee	Community Planning Committee
Tallygaroopna LandCare Group	Landcare Group
Undera Landcare Group	Landcare Group
Shepparton Mooroopna Urban Landcare Group	Landcare Group
Friends of the Australian Botanic Gardens Shepparton	Community Group
Wilma Court Residents Group, Mooroopna	Community Group
Murchison & District Historical Society	Community Group
Euroa Arboretum	Community Group
Goulburn Broken Indigenous Seedbank	Community Group
Goulburn Valley Library	Community Group
Tatura Community House	Community Group
Goulburn Valley Afghan Association	Community Group
Shepparton Golf Club	Community Group
Barfold Downs	Community Group
Woka Walla Indigenous Crew	Work crew
Dhurringile Prison Landmate Program	Work crew
Family Day Care	Council team
Children's Services Branch	Council team
Landscaping & Native Open Space	Council team
Parks, Open Spaces & Sporting Fields	Council team
Murchison Pre-school	Childcare Centre
Arthur Dickmann Childcare Centre	Childcare Centre
Arthur Dickmann Kindergarten	Childcare Centre
Nancy Vibert Kindergarten	Childcare Centre
Toolamba Kindergarten	Childcare Centre
Murchison Primary School	Primary School
Dookie Primary School	Primary School
Currawa Primary School	Primary School
Sacred Heart Primary School	Primary School
Tatura Primary School	Primary School
Undera Primary School	Primary School
Tallygaroopna Primary School	Primary School
Ardmona Primary School	Primary School
Katandra West Primary School	Primary School
Bouchier Street Primary School	Primary School
Grahamvale Primary School	Primary School
Notre Dame Secondary College	Secondary School
Shepparton High School	Secondary School
GO TAFE	Tertiary Institution

### Species Planted

Although the project is called One Tree Per Child, the species planted were native trees, shrubs, groundcovers and grasses that have been largely cleared from our region. A total of 57 different species of trees, shrubs, groundcovers and grasses were planted to help restore a diverse range of woodland species to provide habitat for woodland birds and other native fauna species.

**Table 10: Species planted**

Botanical Name	Common Name	Plant Type	Total
<i>Acacia acinacea</i>	Gold Dust Wattle	Shrub	2199
<i>Acacia brachybotrya</i>	Grey Mulga	Shrub	120
<i>Acacia dealbata</i>	Silver Wattle	Tree	288
<i>Acacia decora</i>	Western Silver Wattle	Shrub	500
<i>Acacia flexifolia</i>	Bent-leaf Wattle	Shrub	160
<i>Acacia hakeaoides</i>	Hakea Wattle	Shrub	80
<i>Acacia implexa</i>	Lightwood	Tree	391
<i>Acacia genistifolia</i>	Spreading/Early Wattle	Shrub	280
<i>Acacia montana</i>	Mallee Wattle	Shrub	870
<i>Acacia paradoxa</i>	Hedge Wattle	Shrub	400
<i>Acacia pycnantha</i>	Golden Wattle	Shrub	841
<i>Allocasuarina leuhmanii</i>	Buloke	Tree	240
<i>Arthropodium strictus</i>	Chocolate/Vanilla Lilies	Groundcover	40
<i>Atriplex semibaccata</i>	Creeping Saltbush	Groundcover	302
<i>Austrodanthonia duttoniana</i>	Wallaby Grass	Grass	339
<i>Austrodanthonia caespitosa</i>	Common Wallaby Grass	Grass	150
<i>Austrostipa scabra</i>	Spear Grass	Grass	350
<i>Brachyscome basaltica</i>	Swamp Daisy	Groundcover	80
<i>Brachyscome multifida</i>	Blue Daisy	Groundcover	39
<i>Bracteantha viscosa</i>	Sticky Everlasting	Groundcover	196
<i>Bothriochloa macra</i>	Red Leg Grass	Grass	200
<i>Bursaria spinosa</i>	Sweet Bursaria	Shrub	991
<i>Callistemon sieberi</i>	River bottle-brush	Shrub	29
<i>Callitris glaucophylla</i>	White cypress pine	Tree	240
<i>Callistemon pallidus</i>	Lemon Bottle brush	Tree	25
<i>Calocephalus citreus</i>	Lemon Beautyheads	Groundcover	560
<i>Calotis anthemoides</i>	Cut leaf daisy	Groundcover	420
<i>Calotis scapigera</i>	Tufted Burr-daisy	Groundcover	77
<i>Chrysocephalum apiculatum</i>	Common Everlasting	Groundcover	543
<i>Daviesia ulicifolia</i>	Gorse bitter pea	Shrub	139
<i>Dianella longifolia</i>	Pale Flax Lily	Groundcover	80
<i>Dianella revoluta</i>	Black Anther Flax Lily	Groundcover	439
<i>Dillwynia cinerescens</i>	Grey Parrot-pea	Shrub	240
<i>Dodonea viscosa</i>	Wedge-leaf Hop Bush	Shrub	2092



Botanical Name	Common Name	Plant Type	Total
<i>Dodonaea viscosa ssp augustissima</i>	Narrow-leaf Hop-bush	Shrub	80
<i>Einadia nutans</i>	Nodding Saltbush	Groundcover	40
<i>Enchylaena tomentosa</i>	Ruby Saltbush	Groundcover	40
<i>Eremophila longifolia</i>	Emu bush	Tree	15
<i>Eucalyptus albens</i>	White box	Tree	40
<i>Eucalyptus camaldulensis</i>	River Red Gum	Tree	66
<i>Eucalyptus melliodora</i>	Yellow Box	Tree	140
<i>Eucalyptus microcarpa</i>	Grey Box	Tree	80
<i>Eucalyptus polybractea</i>	Blue Mallee	Tree	2
<i>Eucalyptus viridis</i>	Green Mallee	Tree	2
<i>Eutaxia diffusa</i>	Spreading Eutaxia	Shrub	246
<i>Eutaxia microphylla</i>	Common Eutaxia	Shrub	149
<i>Hakea tephrosperma</i>	Hooked needle wood	Tree	120
<i>Kennedia prostrata</i>	Running postman	Groundcover	80
<i>Leptospermum obovatum</i>	River tea-tree	Tree	115
<i>Lomandra longifolia</i>	Mat rush	Groundcover	160
<i>Melaleuca lanceolata</i>	Moonah Black tea-tree	Tree	40
<i>Pittosporum phylliraeoides</i>	Weeping Pittosporum	Shrub	81
<i>Poa labillardieri</i>	Tussock Grass	Grass	440
<i>Poa sieberiana</i>	Grey tussock grass	Grass	120
<i>Pycnosorus globulus</i>	Drumsticks	Groundcover	400
<i>Senna artemisioides</i>	Cassia (Punty Bush)	Shrub	220
<i>Themeda triandra</i>	Kangaroo Grass	Grass	400
<b>Total Planted</b>			<b>17,016</b>

### Acknowledgements

The Sustainability and Environment Team would like to thank the following Council staff members and teams for assisting us to achieve our One Tree Per Child planting target. Undertaking a large project such as this requires assistance from a wide range of Council staff members/teams and we are very grateful for your support. Special thanks go to the Landscaping & Native Open Space, and the Parks, Open Space & Sports Fields Crews for participating in the team planting days.

**Table 11: Council staff involved**

Who	Team	Project Elements
Julie Goodwin/Jenni Gibson	Children & Youth Services	Partnerships/ promotion
Sally Rose	Children & Youth Services	Partnerships/ promotion
Community Strengthening Team	Community Strengthening Team	Partnerships/ promotion/ vehicle use
Customer Service Team	Customer Service Team	T-shirts - promotion
Doug Cousins	Environmental Health	Vehicle use
Angie Spiewak	Family Day Care	Partnerships/ promotion
Michael McCorry	Marketing & Communications	Website updates
Rick Canobie	Marketing & Communications	Website updates
Adele Dhillon	Marketing & Communications	Design elements
Chris Hawking	Marketing & Communications	Design elements
Erin Cowan	Marketing & Communications	Media & promotion
Stephanie Giankos	Marketing & Communications	Media & promotion
Native Open Space Team	Native Open Space Team	Site preparation, planting
Brian Doyle	Occupational Health & Safety Advisor	OHS – Risk assessments
Karen Dexter	Property	Site information and suitability
Chris Giles	Stores	Equipment / Vehicles
Kevin Hyde	Stores	Equipment
Landscaping and Native Open Space	Landscaping and Native Open Space	Planting
Parks, Open Space and Sports Fields	Parks, Open Space and Sports Fields	Site preparation, planting
Ifte Hossain	Works	Vehicle use
John Lloyd	Works	Vehicle use
Tony Ellis	Works	Cable location